

# (#5104) GOLDEN HILLS PHASE 2C

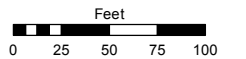
PORTION OF NW ¼ SECTION 14  
& SW ¼ SECTION 11  
T18N - R20E

Assessor's Map Number

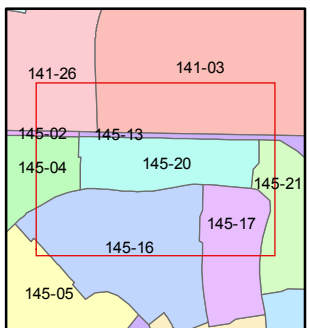
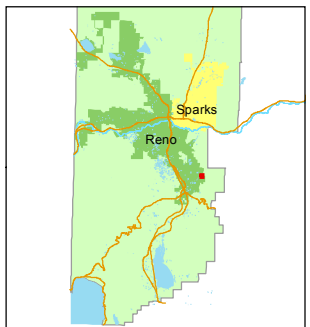
**145-20**

STATE OF NEVADA  
**WASHOE COUNTY**  
ASSESSOR'S OFFICE  
Joshua G. Wilson, Assessor

1001 East Ninth Street  
Building D  
Reno, Nevada 89512  
(775) 328-2231



1 inch = 100 feet



created by: KSB 11/10/2014

last updated: \_\_\_\_\_

area previously shown on map(s)

145-13

NOTE: This map was prepared for the use of the Washoe County Assessor for assessment and illustrative purposes only. It does not represent a survey of the premises. No liability is assumed as to the sufficiency or accuracy of the data delineated herein.

