

(#4701) McCAULEY RANCH ESTATES

PORTIONS OF THE SW ¼ OF SEC. 14
AND THE SE ¼ OF SEC. 15
T18N - R20E

RETIRED

NOTE: This map has no active parcels and has been retired as of 4/29/2013. This area is now shown on Assessor's map 145-08.

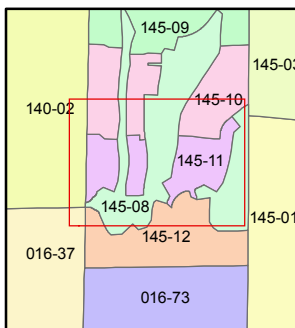
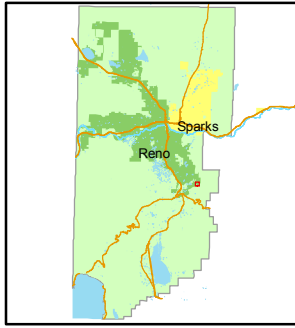
Assessor's Map Number
145-11

STATE OF NEVADA
WASHOE COUNTY
ASSESSOR'S OFFICE
Joshua G. Wilson, Assessor

1001 East Ninth Street
Building D
Reno, Nevada 89512
(775) 328-2231

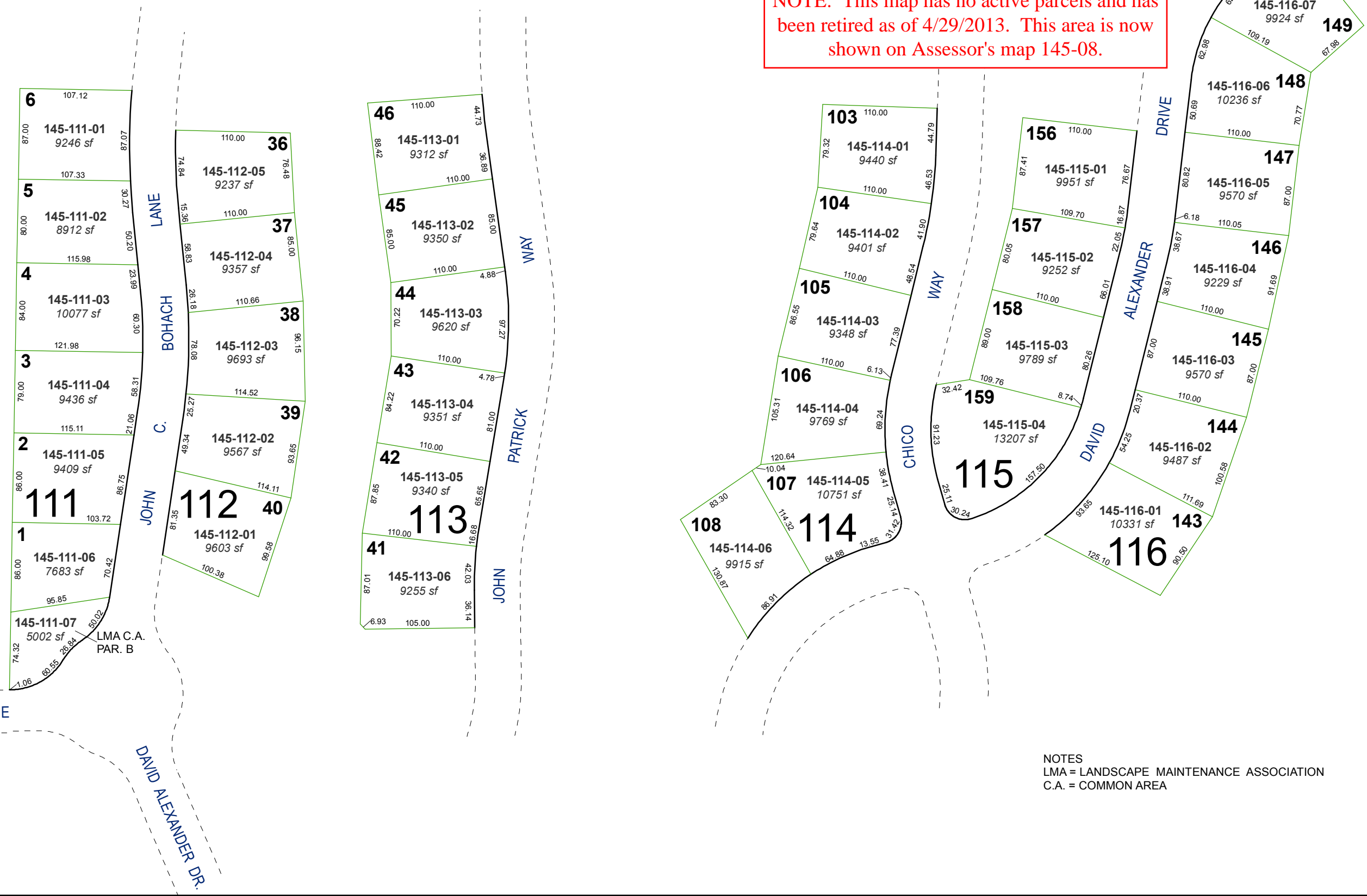


Feet
0 12.525 50 75 100
1 inch = 100 feet



created by: NLH 3/22/2011
last updated: _____
area previously shown on map(s)
145-01

NOTE: This map was prepared for the use of the Washoe County Assessor for assessment and illustrative purposes only. It does not represent a survey of the premises. No liability is assumed as to the sufficiency or accuracy of the data delineated herein.



NOTES
LMA = LANDSCAPE MAINTENANCE ASSOCIATION
C.A. = COMMON AREA