

(#4701)

McCAULEY RANCH ESTATES

PORTIONS OF THE SW ¼ OF SEC. 14
AND THE SE ¼ OF SEC. 15
T18N - R20E

RETIRED

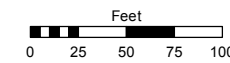
NOTE: This map has no active parcels and has been retired as of 4/29/2013. This area is now shown on Assessor's maps 145-07 and 145-08.

Assessor's Map Number

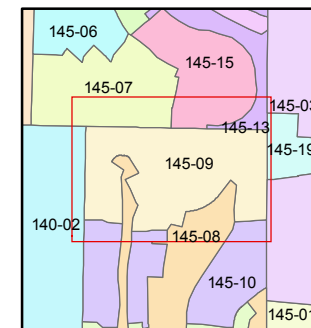
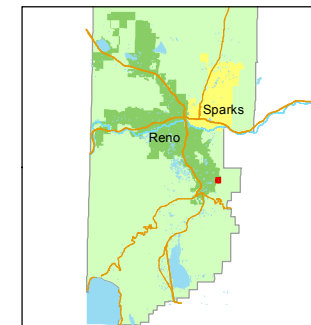
145-09

STATE OF NEVADA
WASHOE COUNTY
ASSESSOR'S OFFICE
Joshua G. Wilson, Assessor

1001 East Ninth Street
Building D
Reno, Nevada 89512
(775) 328-2231



1 inch = 100 feet



created by: NLH 3/22/2011

last updated: CFB 08/29/2011

area previously shown on map(s)
145-01

NOTES
LMA = LANDSCAPE MAINTENANCE ASSOCIATION
C.A. = COMMON AREA

NOTE: This map was prepared for the use of the Washoe County Assessor for assessment and illustrative purposes only. It does not represent a survey of the premises. No liability is assumed as to the sufficiency or accuracy of the data delineated hereon.



097

091

092

093

096

094

095

McCAULEY RANCH BOULEVARD

JOHN C. BOHACH LANE

GOLD MINE DRIVE

GUERNICA COURT

JOHN PATRICK WAY

McCAULEY RANCH BOULEVARD

CHICO WAY

