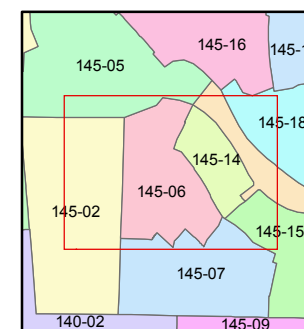
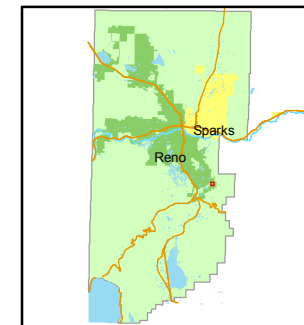


STATE OF NEVADA  
**WASHOE COUNTY**  
ASSESSOR'S OFFICE  
Joshua G. Wilson, Assessor

1001 East Ninth Street  
Building D  
Reno, Nevada 89512  
(775) 328-2231



1 inch = 100 feet



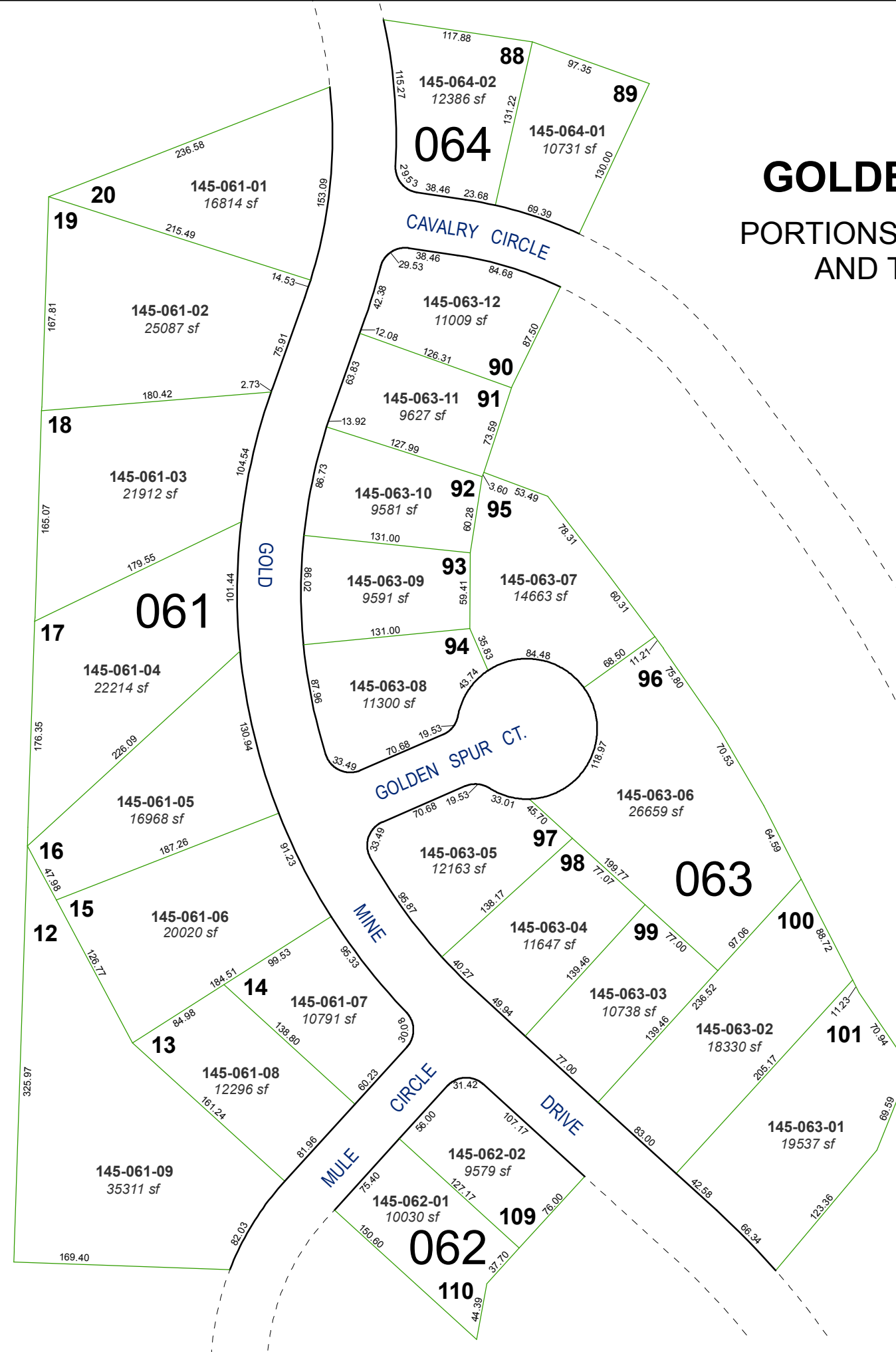
created by: NLH 3/17/2011

last updated: \_\_\_\_\_

area previously shown on map(s)

145-02

NOTE: This map was prepared for the use of the Washoe County Assessor for assessment and illustrative purposes only. It does not represent a survey of the premises. No liability is assumed as to the sufficiency or accuracy of the data delineated herein.



**(#4674)**  
**GOLDEN HILLS PHASE 1**  
PORTIONS OF THE NW ¼ OF SEC. 14  
AND THE SW ¼ OF SEC. 11  
T18N - R20E