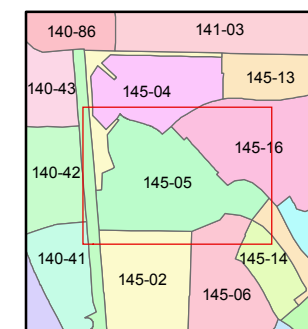
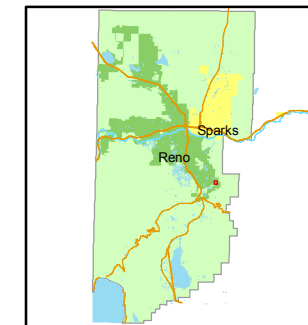


1 inch = 100 feet



created by: NLH 3/16/2011

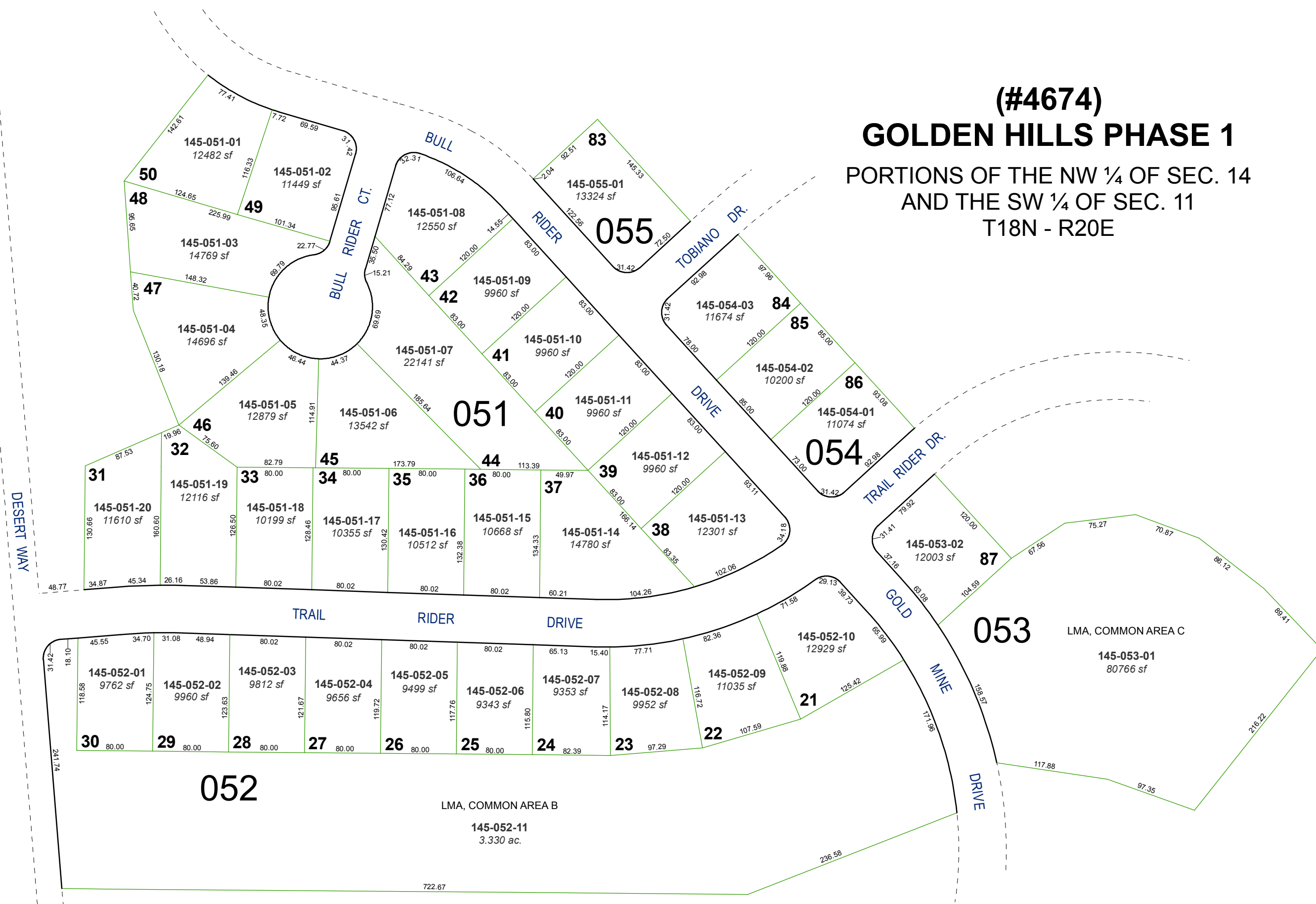
last updated: _____

area previously shown on map(s)

145-02

NOTE: This map was prepared for the use of the Washoe County Assessor for assessment and illustrative purposes only. It does not represent a survey of the premises. No liability is assumed as to the sufficiency or accuracy of the data delineated hereon.

(#4674)
GOLDEN HILLS PHASE 1
PORTIONS OF THE NW ¼ OF SEC. 14
AND THE SW ¼ OF SEC. 11
T18N - R20E



DESERT WAY