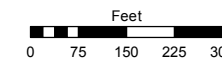
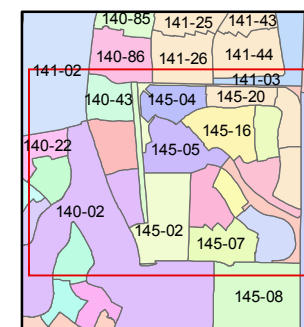
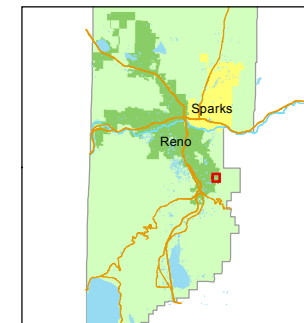


STATE OF NEVADA
WASHOE COUNTY
ASSESSOR'S OFFICE
Michael E. Clark, Assessor

1001 East Ninth Street
Building D
Reno, Nevada 89512
(775) 328-2231



1 inch = 300 feet



created by: NLH 3/16/2011

last updated: CFB 11/21/14 EMG 3/1/16

area previously shown on map(s)

016-38

NOTE: This map was prepared for the use of the Washoe County Assessor for assessment and illustrative purposes only. It does not represent a survey of the premises. No liability is assumed as to the sufficiency or accuracy of the data delineated hereon.

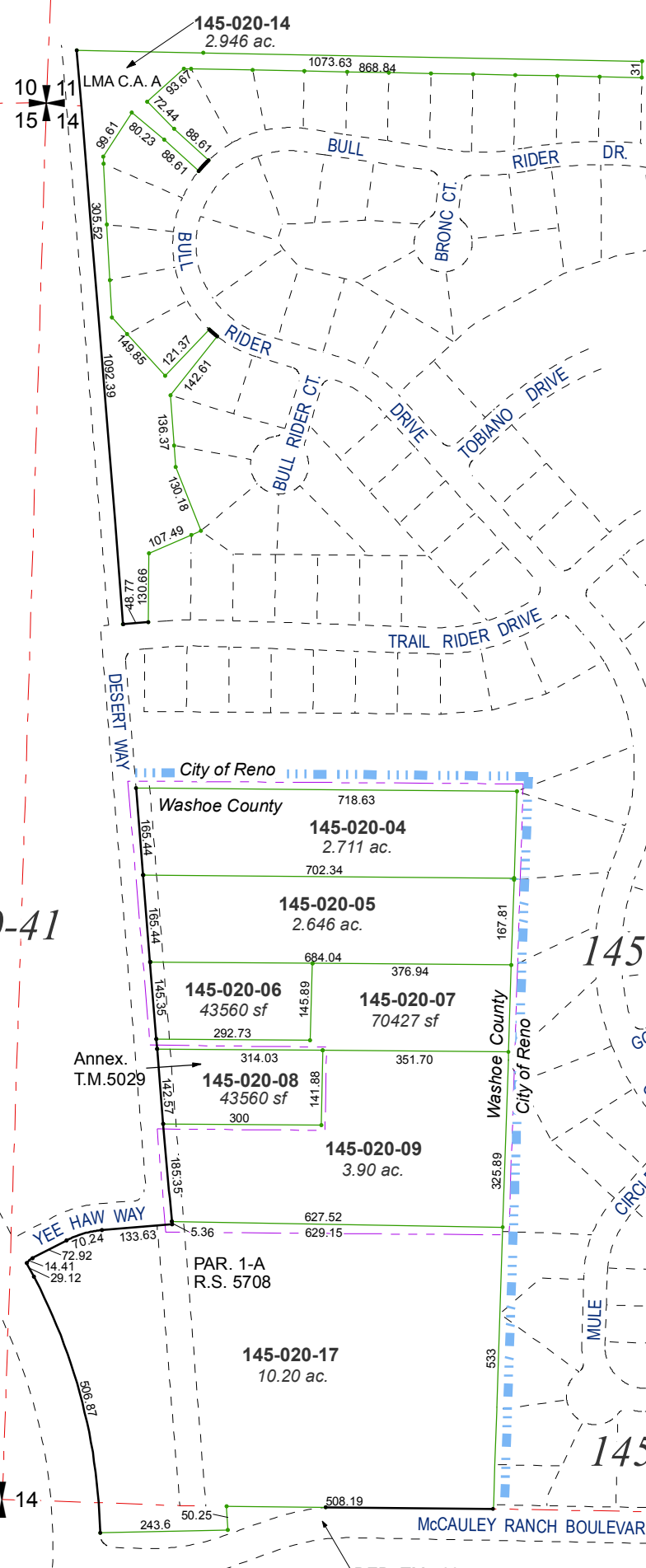
(#4674) GOLDEN HILLS PHASE 1

PORTIONS OF THE NW ¼ OF SEC. 14 AND THE SW ¼ OF SEC. 11 T18N - R20E

140-42

140-41

140-02



145-06

145-07

CENTER
SEC. 14

DED. TM 4604