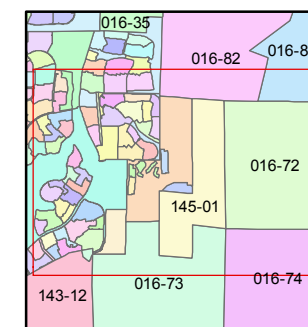
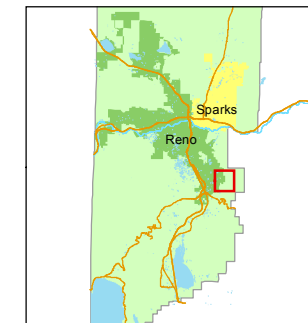


1 inch = 800 feet



created by: NLH 7/08/2009

last updated: KSB 4/29/13 KSB 6/02/17

area previously shown on map(s)

016-39 & 73

NOTE: This map was prepared for the use of the Washoe County Assessor for assessment and illustrative purposes only. It does not represent a survey of the premises. No liability is assumed as to the sufficiency or accuracy of the data delineated hereon.

**POR. OF E 1/2 SECTION 14
& POR. OF NE 1/4 SECTION 23
T18N - R20E**

