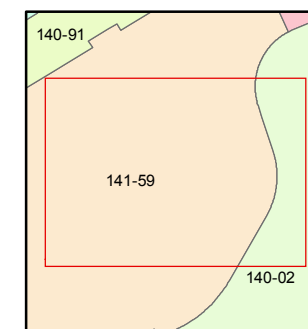
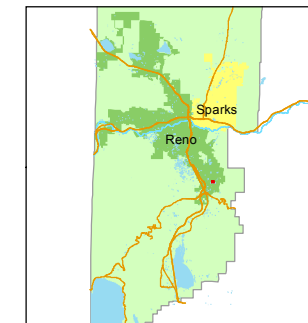




1 inch = 40 feet



created by: SR 05/17/2017

last updated: _____

area previously shown on map(s)

140-91

NOTE: This map was prepared for the use of the Washoe County Assessor for assessment and illustrative purposes only. It does not represent a survey of the premises. No liability is assumed as to the sufficiency or accuracy of the data delineated hereon.

141-59-S3

SEA HORSE ROAD

596

DARK HORSE ROAD

PRIVATE ACCESS EASEMENT & PUE

141-59-S7

SECOND FLOOR

99 = BUILDING NUMBER

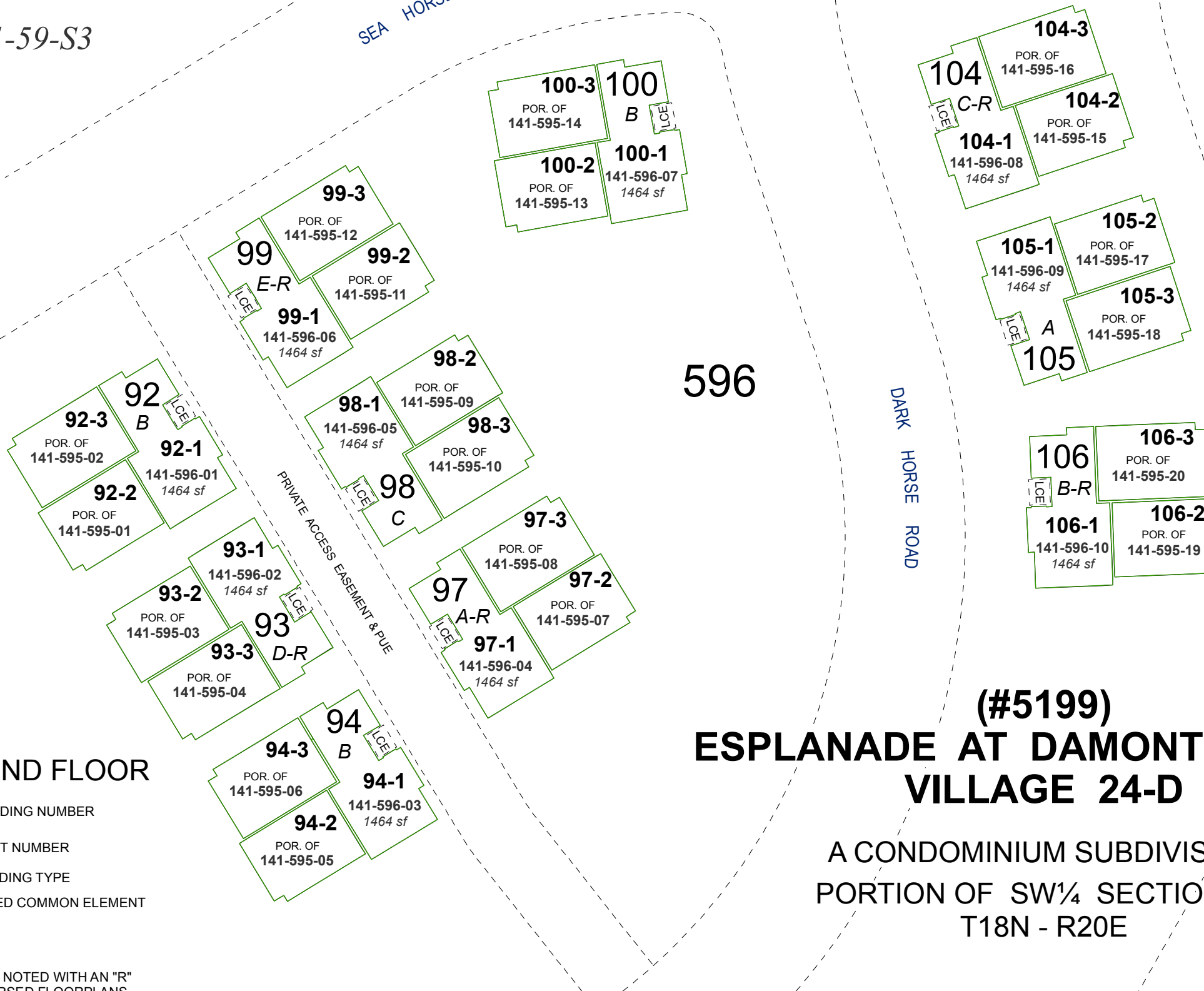
99-1 = UNIT NUMBER

A-R = BUILDING TYPE

LCE = LIMITED COMMON ELEMENT

NOTES

- BUILDINGS NOTED WITH AN "R" ARE REVERSED FLOORPLANS
- SEE PAGES 141-59-S1 & S2 FOR UNIT DETAILS
- SEE PAGE 141-59-S5 FOR FIRST FLOOR



**(#5199)
ESPLANADE AT DAMONTE RANCH
VILLAGE 24-D**

A CONDOMINIUM SUBDIVISION
PORTION OF SW¼ SECTION 15
T18N - R20E