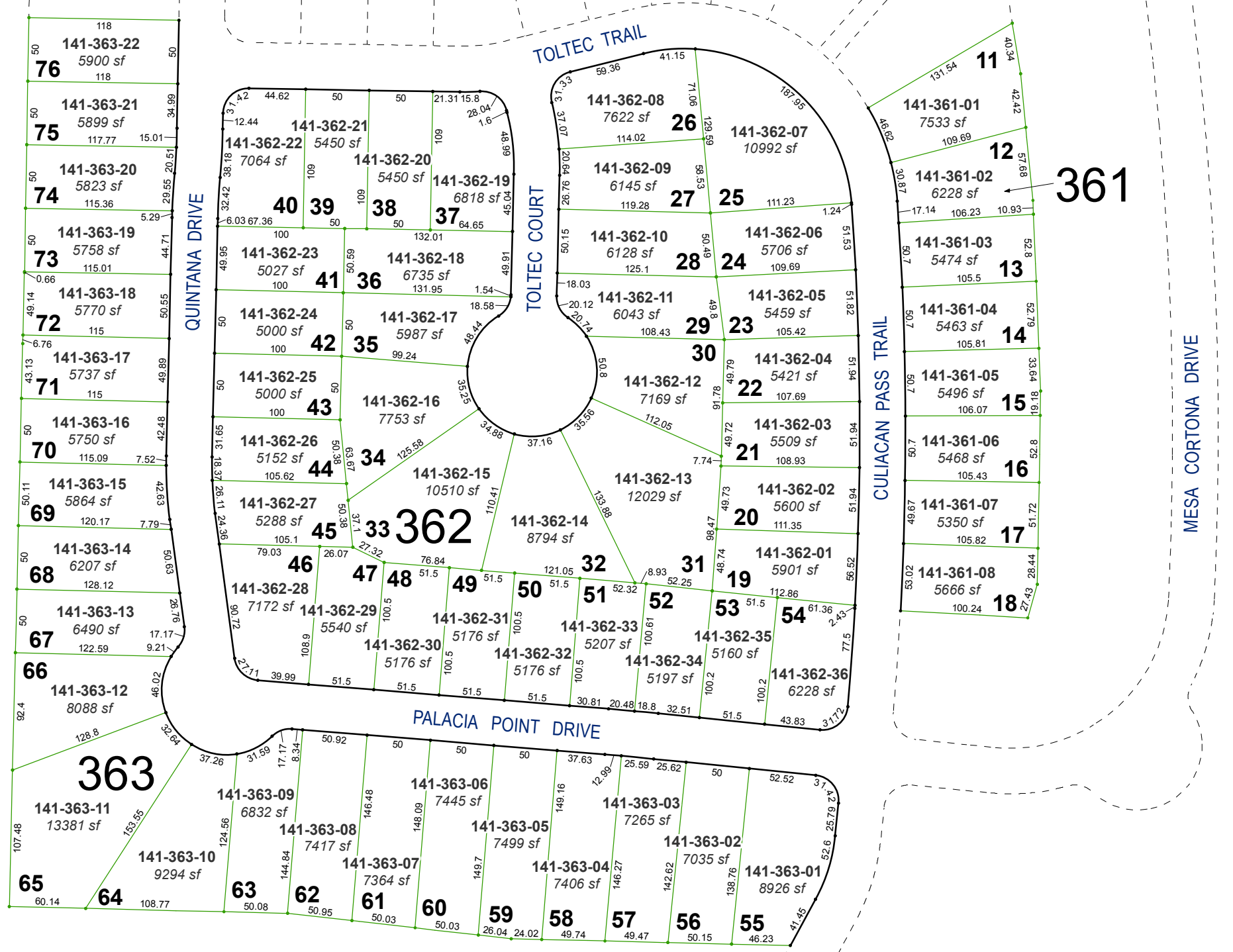


(#5128)
DAMONTE RANCH - PHASE V
VILLAGES 1 & 2, UNIT 2B

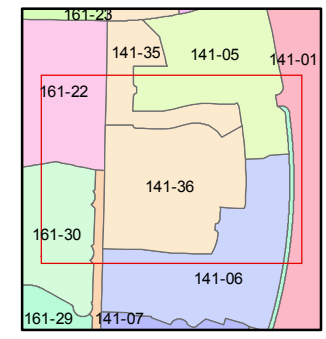
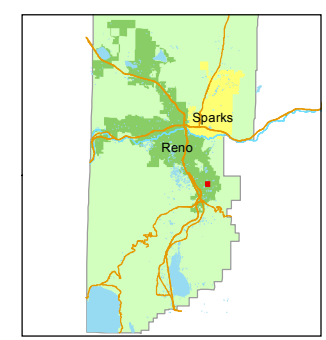
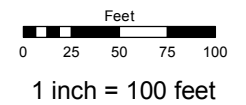
A SPECIAL PLAN DISTRICT
 POR. OF SW ¼ SEC. 10 AND
 POR. OF NW ¼ SEC. 15
 T18N - R20E



Assessor's Map Number
141-36

STATE OF NEVADA
WASHOE COUNTY
 ASSESSOR'S OFFICE
 Michael E. Clark, Assessor

1001 East Ninth Street
 Building D
 Reno, Nevada 89512
 (775) 328-2231



created by: EMG 08/19/2015
 last updated: SR 11/18/16

area previously shown on map(s)
141-04

NOTE: This map was prepared for the use of the Washoe County Assessor for assessment and illustrative purposes only. It does not represent a survey of the premises. No liability is assumed as to the sufficiency or accuracy of the data delineated hereon.