

Assessor's Map Number

**132-62**

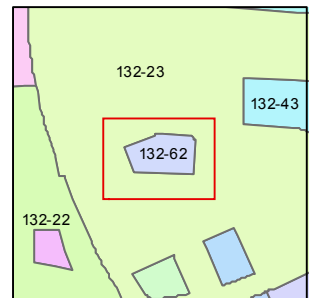
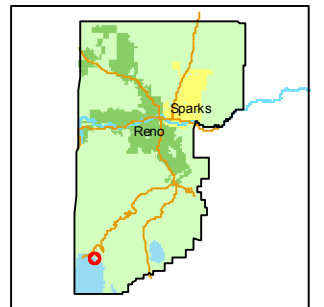
STATE OF NEVADA  
**WASHOE COUNTY**  
**ASSESSOR'S OFFICE**

Joshua G. Wilson, Assessor  
1001 East Ninth Street  
Building D  
Reno, Nevada 89512  
(775) 328-2231



0 3.75 7.5 15 22.5 30 Feet

1 inch = 30 feet



created by: NLH 4/13/2009

last updated: \_\_\_\_\_

area previously shown on map(s)

132-23

NOTE: This map was prepared for the use of the Washoe County Assessor for assessment and illustrative purposes only. It does not represent a survey of the premises. No liability is assumed as to the sufficiency or accuracy of the data delineated hereon.

132-23

WAY

INCLINE

COURT

132-23

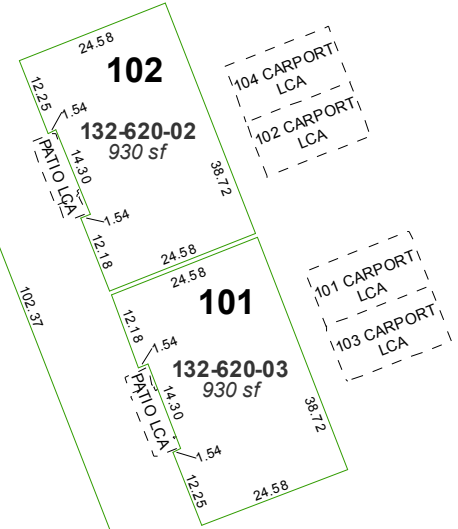
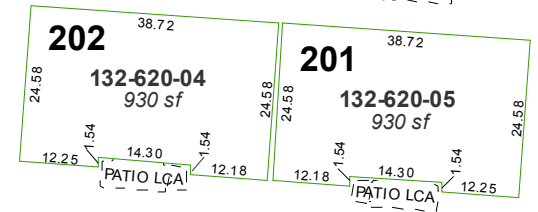
INCLINE

132-23

132-23

132-23

COMMON AREA  
132-620-01  
29475 sf



TCWM100  
GROUND  
E 2237532.58  
N 14767111.70

S74.55.41W  
221.42'



**(#4912)**  
**915 INCLINE WAY**  
A CONDOMINIUM  
A POR. OF THE SW 1/4 OF SEC. 15,  
T16N - R18E

**FIRST FLOOR UNITS**

SEE PAGE 132-62-S1 FOR SECOND FLOOR UNITS

LCA = LIMITED COMMON AREA