

MT. BROOK STATION CONDOMINIUMS (#3807)

COMMON AREA ONLY

PORTION OF SW 1/4 OF SECTION 15, T16N - R18E
TO EACH AN UNDIVIDED 1/64th INTEREST IN THE COMMON AREA

132-25

132-24

132-24

132-24

ENTERPRISE

EAST

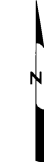
ORIOLE

132-21

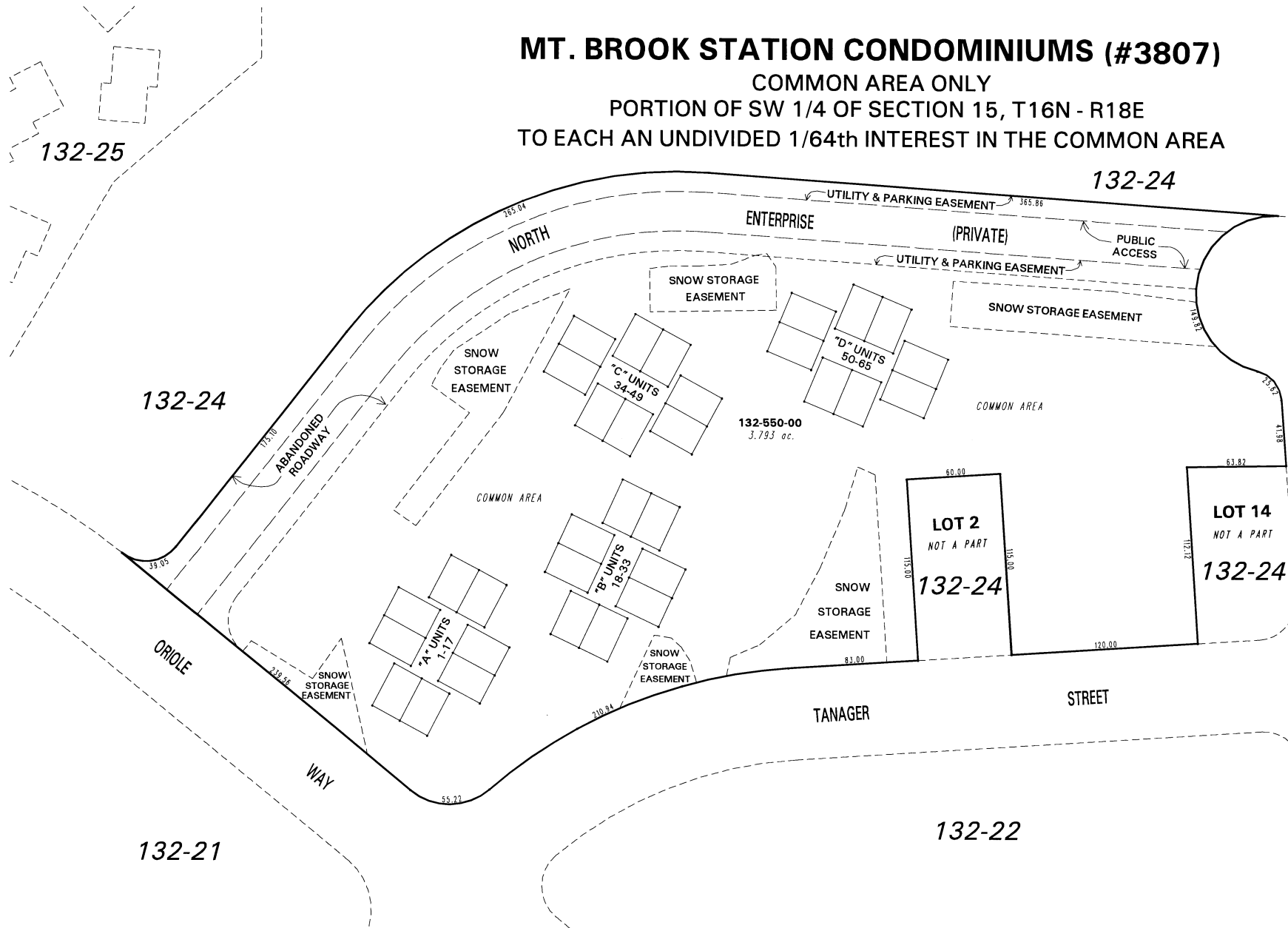
WAY

132-22

132-22



1" = 60'



NOTE: This map is prepared for the use of the Washoe County Assessor for assessment and illustrative purposes only. It does not represent a survey of the premises. No liability is assumed as to the sufficiency or the accuracy of the data delineated hereon.

Office of Washoe County Assessor, Nevada - Joshua G. Wilson

This area previously shown on 132-24

NOTE: Areas of parcels which are less than 2 acres are shown in square feet.

Drawn by	TWT 4/6/00
Revised	TWT 2/15/01, 2/29/08