

# THE POINTE AT THIRD CREEK (#3277)

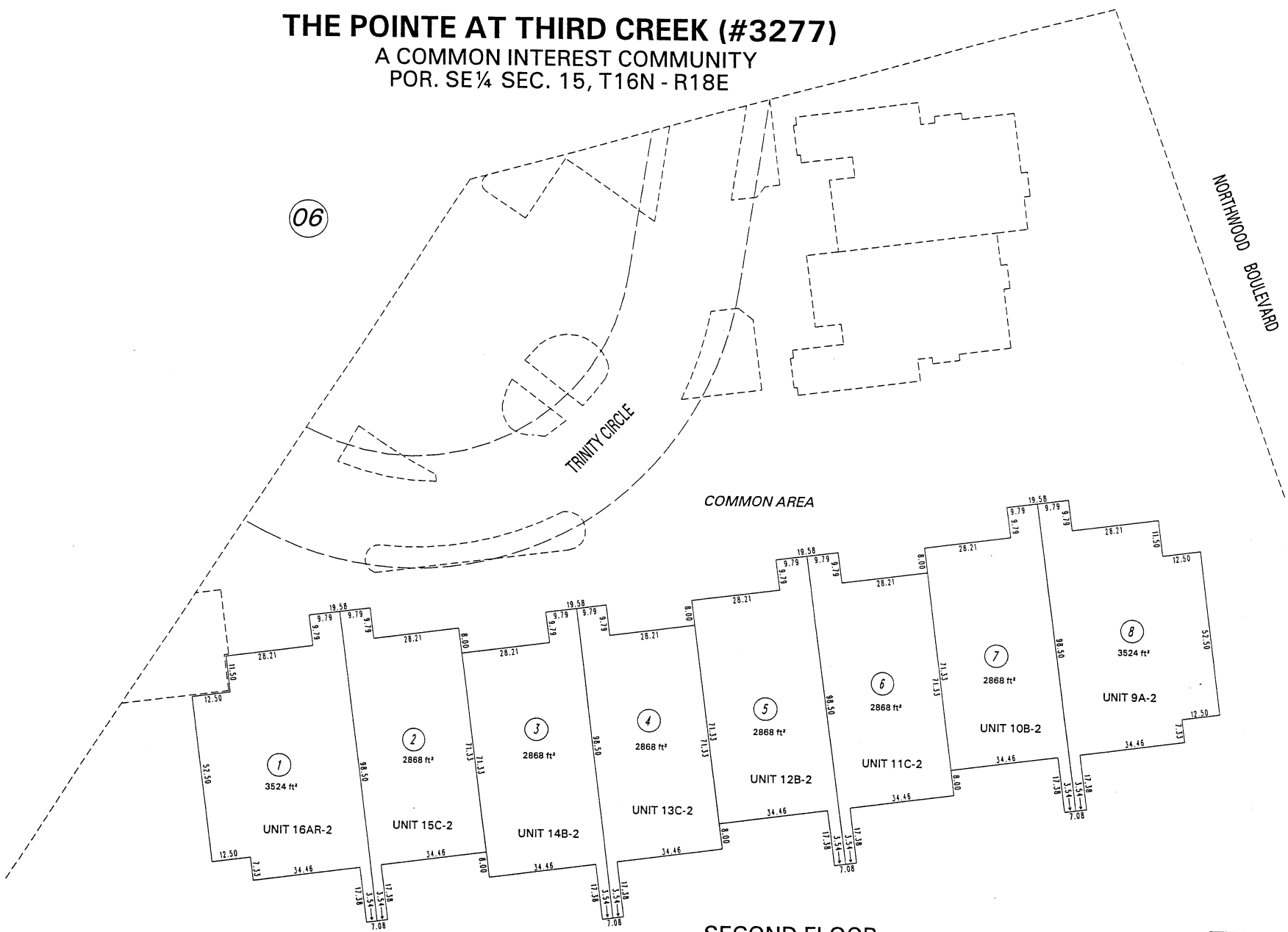
A COMMON INTEREST COMMUNITY  
POR. SE 1/4 SEC. 15, T16N - R18E

06

NORTHWOOD BOULEVARD

TRINITY CIRCLE

COMMON AREA



SECOND FLOOR

NOTE: This map is prepared for the use of the Washoe County Assessor for assessment and illustrative purposes only. It does not represent a survey of the premises. No liability is assumed as to the sufficiency or the accuracy of the data delineated hereon.

Office of Washoe County Assessor, Nevada - Robert W. McGowan

NOTE:  
ASSESSOR'S BLOCK NUMBERS SHOWN IN ELLIPSES  
ASSESSOR'S PARCEL NUMBERS SHOWN IN CIRCLES

Drawn by	GZ 8/12/96
Revised	

