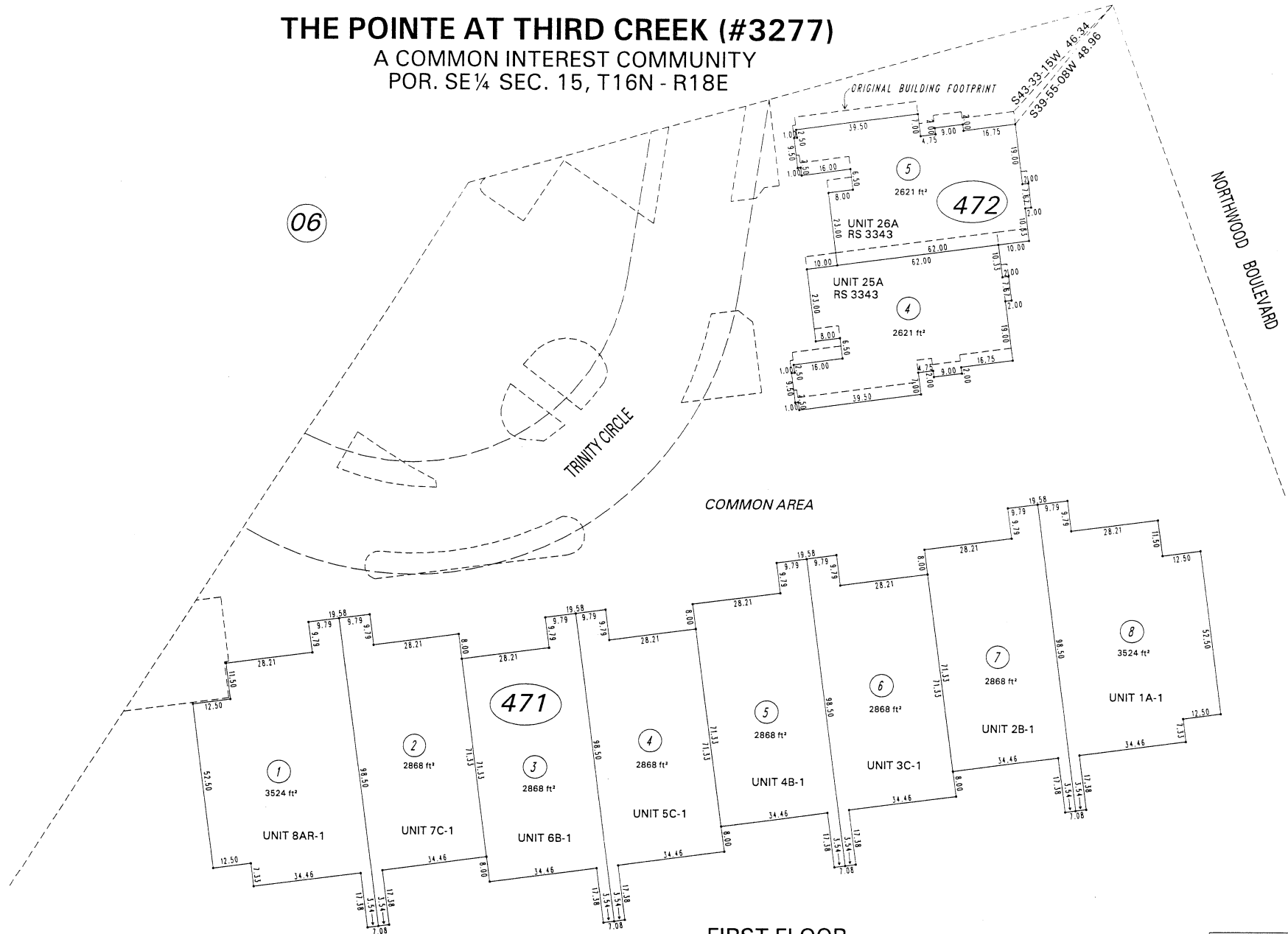


# THE POINTE AT THIRD CREEK (#3277)

A COMMON INTEREST COMMUNITY  
POR. SE¼ SEC. 15, T16N - R18E



FIRST FLOOR

NOTE: This map is prepared for the use of the Washoe County Assessor for assessment and illustrative purposes only. It does not represent a survey of the premises. No liability is assumed as to the sufficiency or the accuracy of the data delineated herein.

Office of Washoe County Assessor, Nevada - Robert W. McGowan

This area previously shown on \_\_\_\_\_  
NOTE:  
ASSESSOR'S BLOCK NUMBERS SHOWN IN ELLIPSES  
ASSESSOR'S PARCEL NUMBERS SHOWN IN CIRCLES

Drawn by GZ 8/12/96  
Revised 1/06/97 T.JF

