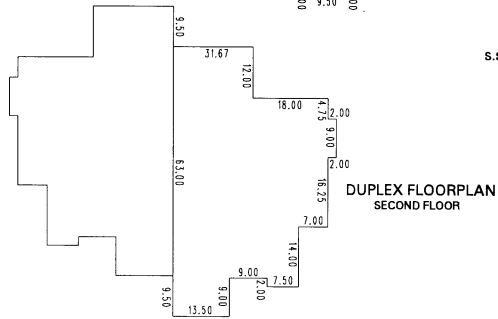
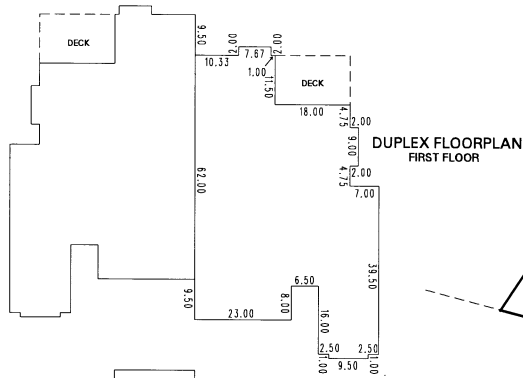
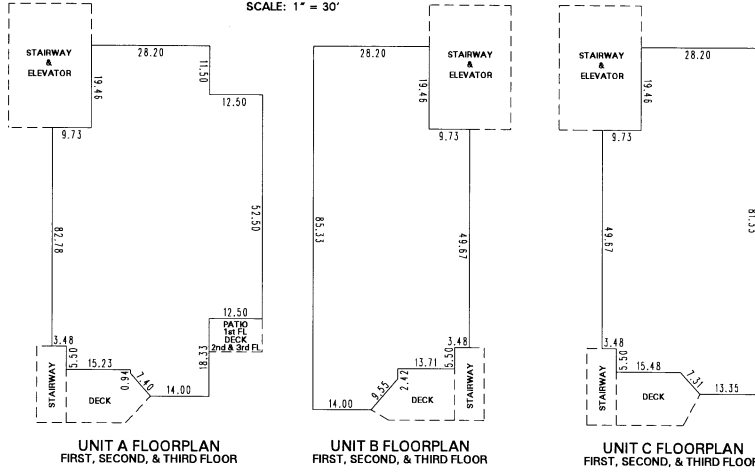


132-46

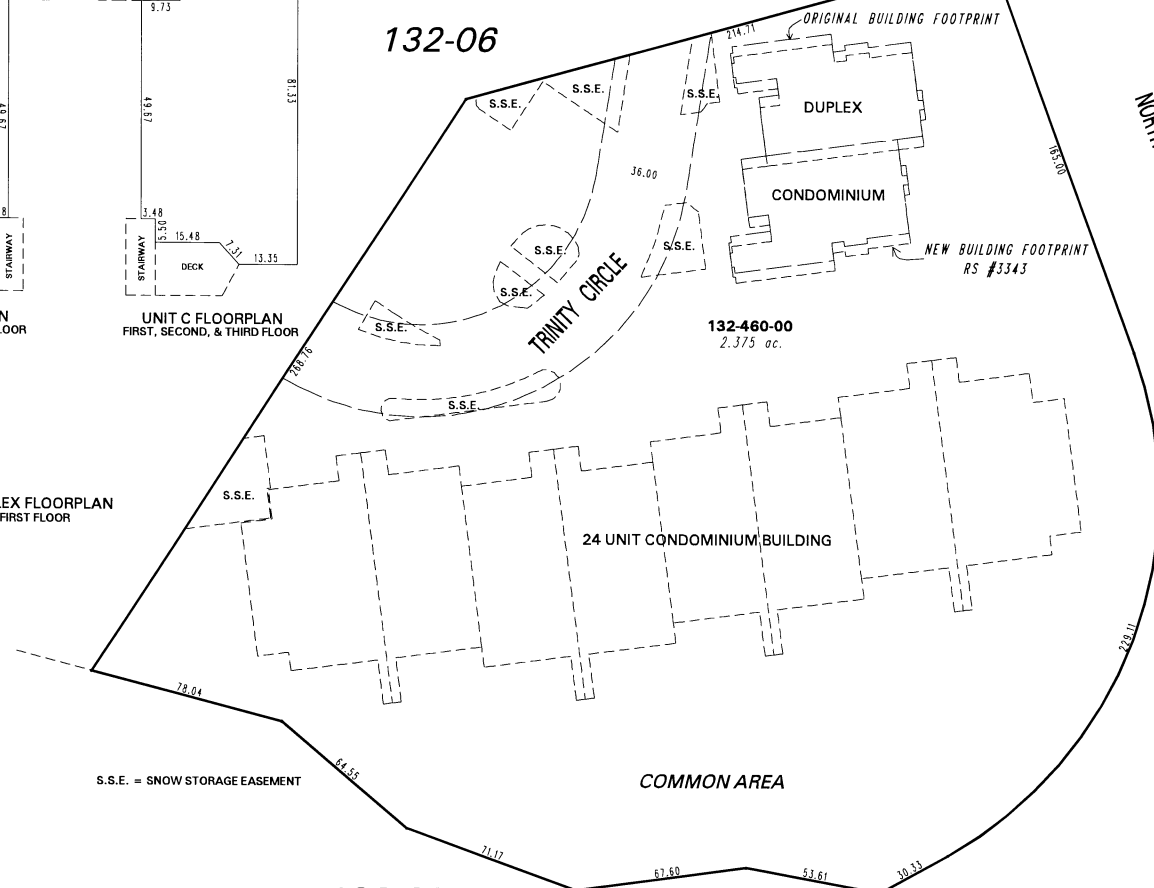
(#3277) THE POINTE AT THIRD CREEK A COMMON INTEREST COMMUNITY POR. SE ¼ SEC. 15, T16N - R18E

TYPICAL UNITS
SCALE: 1" = 30'



132-06

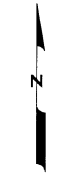
131-24



132-23

131-29

NORTHWOOD BOULEVARD



1" = 50'



NOTE: This map is prepared for the use of the Washoe County Assessor for assessment and illustrative purposes only. It does not represent a survey of the premises. No liability is assumed as to the sufficiency or the accuracy of the data delineated herein.

Office of Washoe County Assessor, Nevada - Joshua G. Wilson

This area previously shown on _____

NOTE: Areas of parcels which are less than 2 acres are shown in square feet.

Drawn by	GZ 8/12/96
Revised	1/06/97 TJF TW 2/27/08