

# CONDOMINIUM PARCEL MAP NO.2887

LOT 16, SOUTHWOOD SUBDIVISION NO. 1  
PORTION SE 1/4 SECTION 16, T16N - R18E

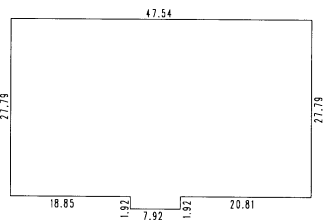
TO EACH AN UNDIVIDED 1/2 INTEREST IN COMMON AREA

132-21

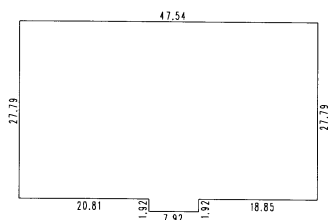
132-35

132-53

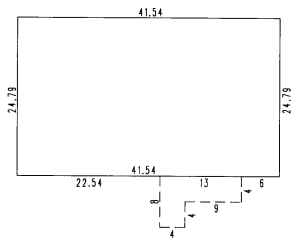
132-37



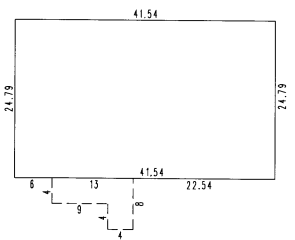
SECOND FLOOR - UNIT 2



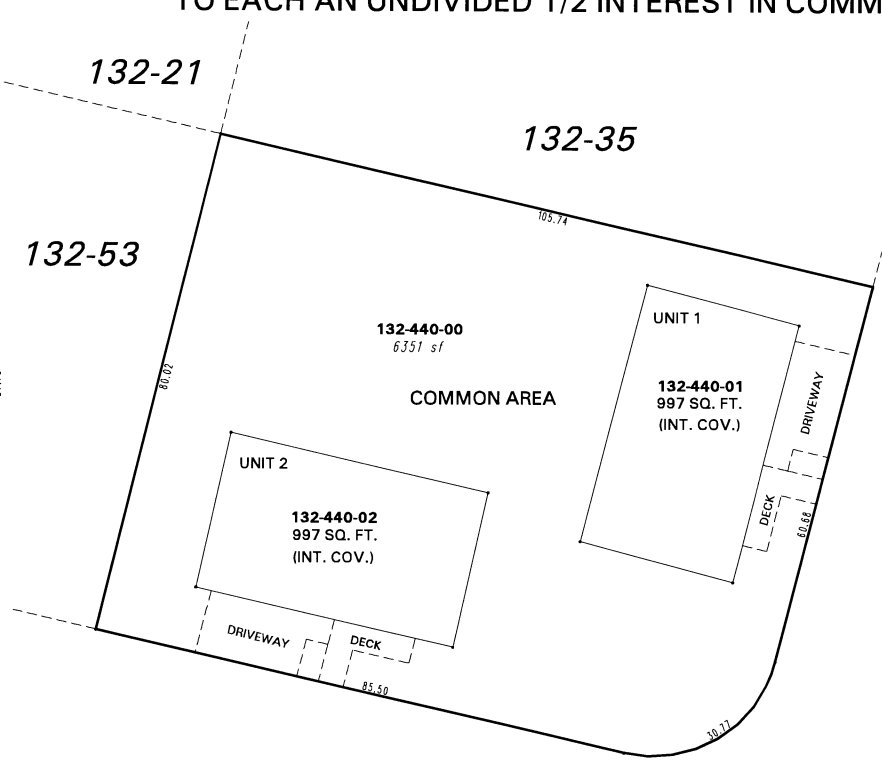
SECOND FLOOR - UNIT 1



FIRST FLOOR - UNIT 2



FIRST FLOOR - UNIT 1



ROBIN DRIVE

SOUTHWOOD BOULEVARD



1" = 20'



127-10

NOTE: This map is prepared for the use of the Washoe County Assessor for assessment and illustrative purposes only. It does not represent a survey of the premises. No liability is assumed as to the sufficiency or the accuracy of the data delineated hereon.

127-11  
Office of Washoe County Assessor, Nevada - Joshua G. Wilson

This area previously shown on 132-21

NOTE: Areas of parcels which are less than 2 acres are shown in square feet.

Drawn by	TWT	02/26/08
Revised		