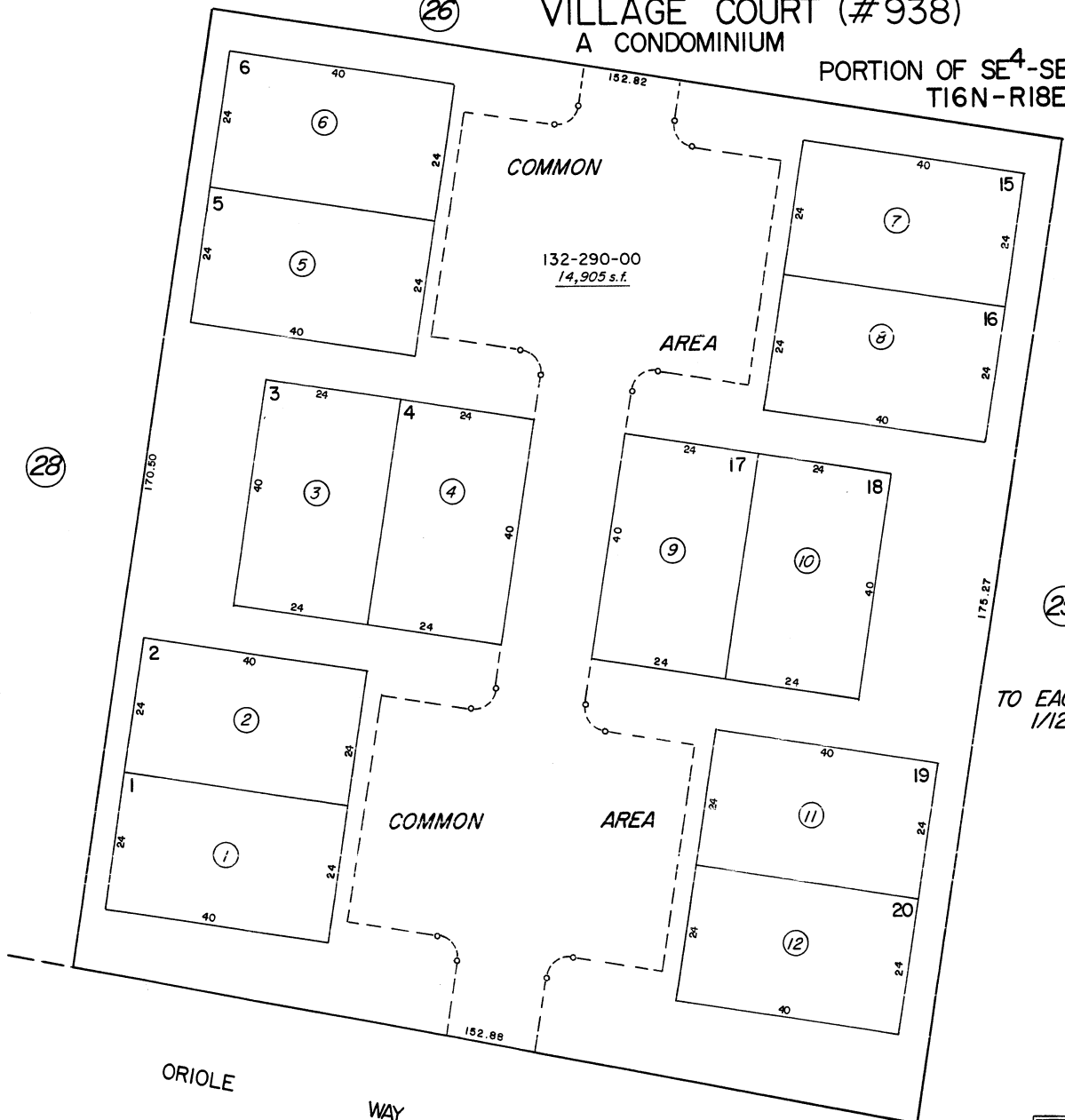


(26)

VILLAGE COURT (#938)  
A CONDOMINIUM

132-29

PORTION OF SE<sup>4</sup>-SECTION 16  
T16N-R18E



132-290-00  
14,905 s.f.

COMMON

AREA

COMMON

AREA

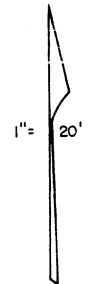
TO EACH AN UNDIVIDED  
1/12th INTEREST

(28)

(25)

(20)

ORIOLE  
WAY



NOTE: This Map is prepared for the use of the Washoe County Assessor for Assessment and illustrative purposes only, it does not represent survey of the premises. No liability is assumed as to the sufficiency or accuracy of the data delineated hereon.

Assessor's Map County of Washoe, Nevada

NOTE - ASSESSOR'S BLOCK NUMBERS SHOWN IN ELLIPSES  
ASSESSOR'S PARCEL NUMBERS SHOWN IN CIRCLES

drawn by	B.T. 9/83
revised	TWT 2/13/08
superseded	