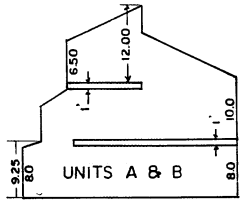
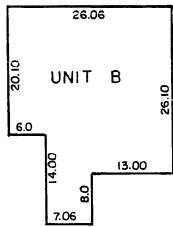


(#1983)
SOUTHWOOD GLEN
A CONDOMINIUM
POR. SE4 SEC. 16, T.16 N-R.18E
UNDIVIDED 1/4 INTEREST

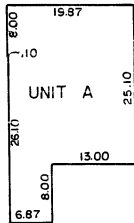


TYPICAL SECTION



TYPICAL UNITS

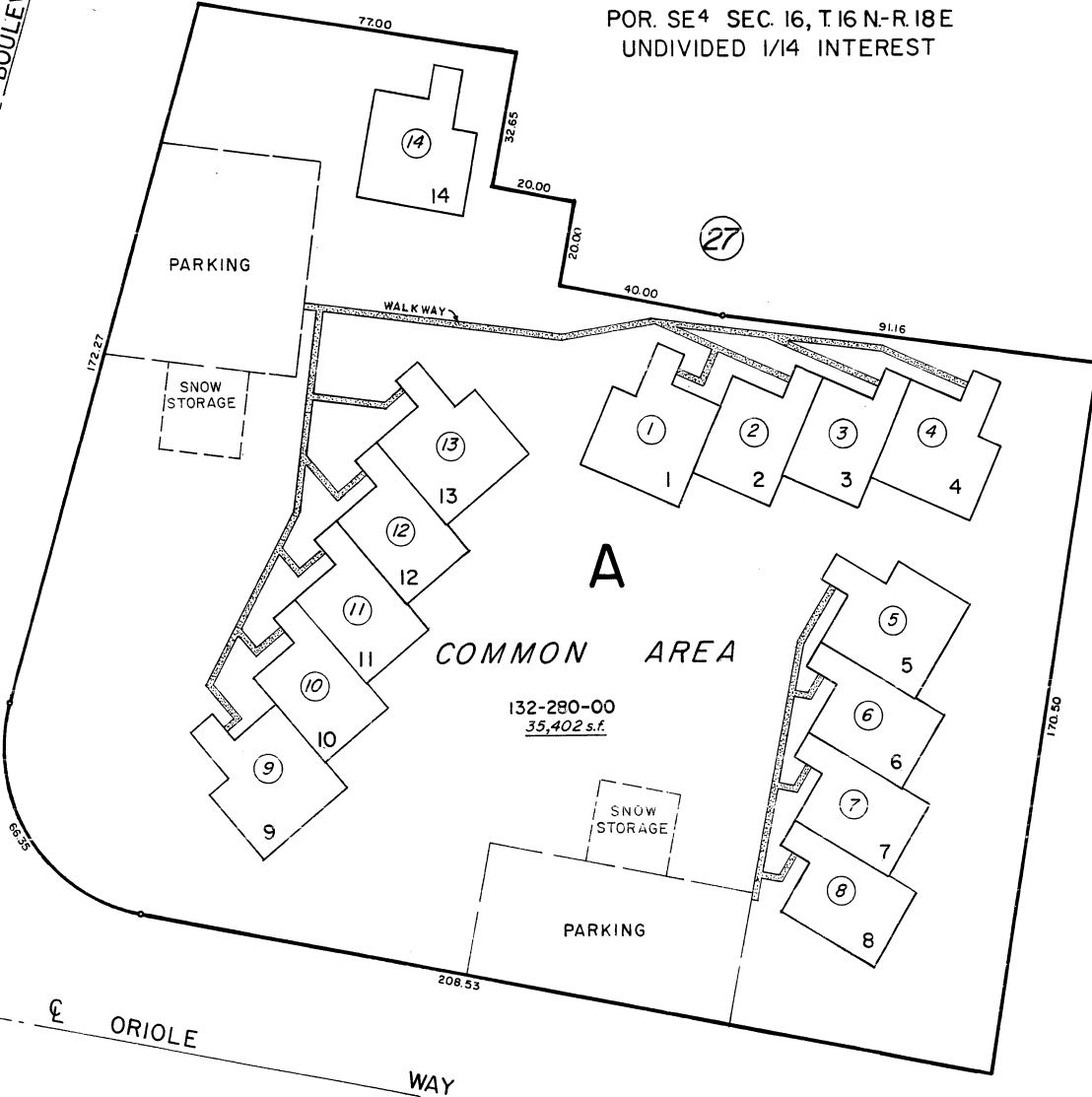
SCALE: 1" = 20'



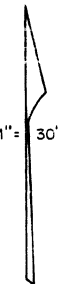
20

CL SOUTHWOOD

BOULEVARD



29



NOTE: This Map is prepared for the use of the Washoe County Assessor for Assessment and illustrative purposes only. It does not represent a survey of the premises. No liability is assumed as to the sufficiency or accuracy of the data delineated hereon.

20

Assessor's Map County of Washoe, Nevada

NOTE - ASSESSOR'S BLOCK NUMBERS SHOWN IN ELLIPSES
ASSESSOR'S PARCEL NUMBERS SHOWN IN CIRCLES

drawn by MARY PORTER 5/5/81
revised 9/83 TWT 2/13/08
superseded