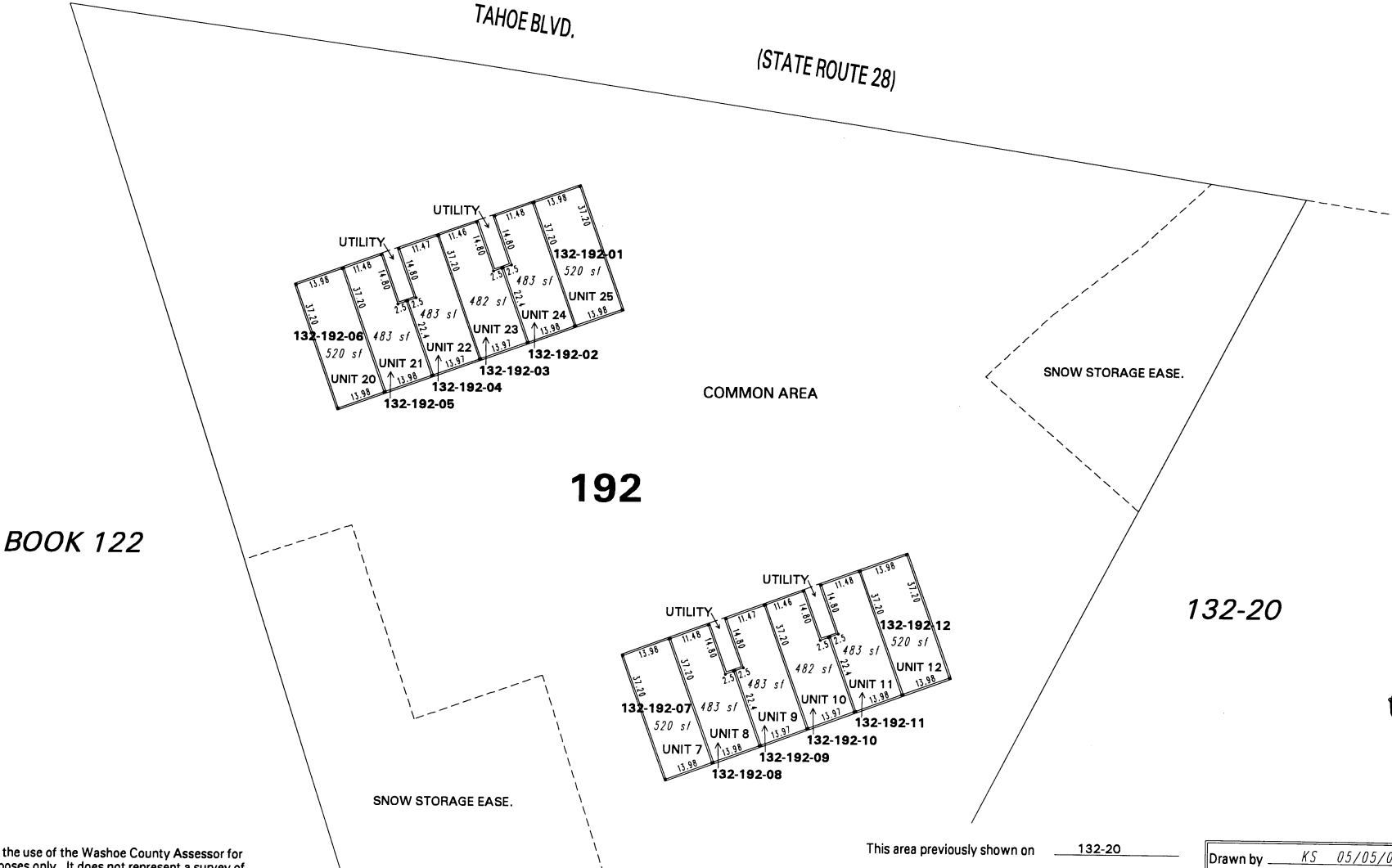


**TOEPA - A CONDOMINIUM (#3822)**  
PORTION OF SE 1/4 OF SECTION 16, T16N - R18E  
UPPER LEVEL UNITS  
TO EACH A 1/24th INTEREST IN THE COMMON AREA



NOTE: This map is prepared for the use of the Washoe County Assessor for assessment and illustrative purposes only. It does not represent a survey of the premises. No liability is assumed as to the sufficiency or the accuracy of the data delineated hereon.

Office of Washoe County Assessor, Nevada - Robert W. McGowan

This area previously shown on 132-20

NOTE: Areas of parcels which are less than 2 acres are shown in square feet.

Drawn by KS 05/05/00  
Revised KSB 1/23/03

