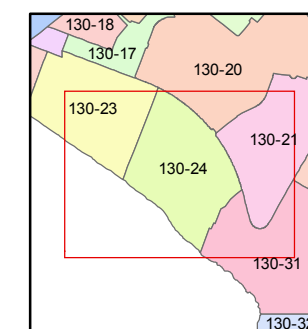
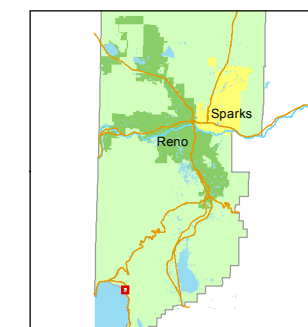


1 inch = 200 feet



created by: CFB 06/06/2011

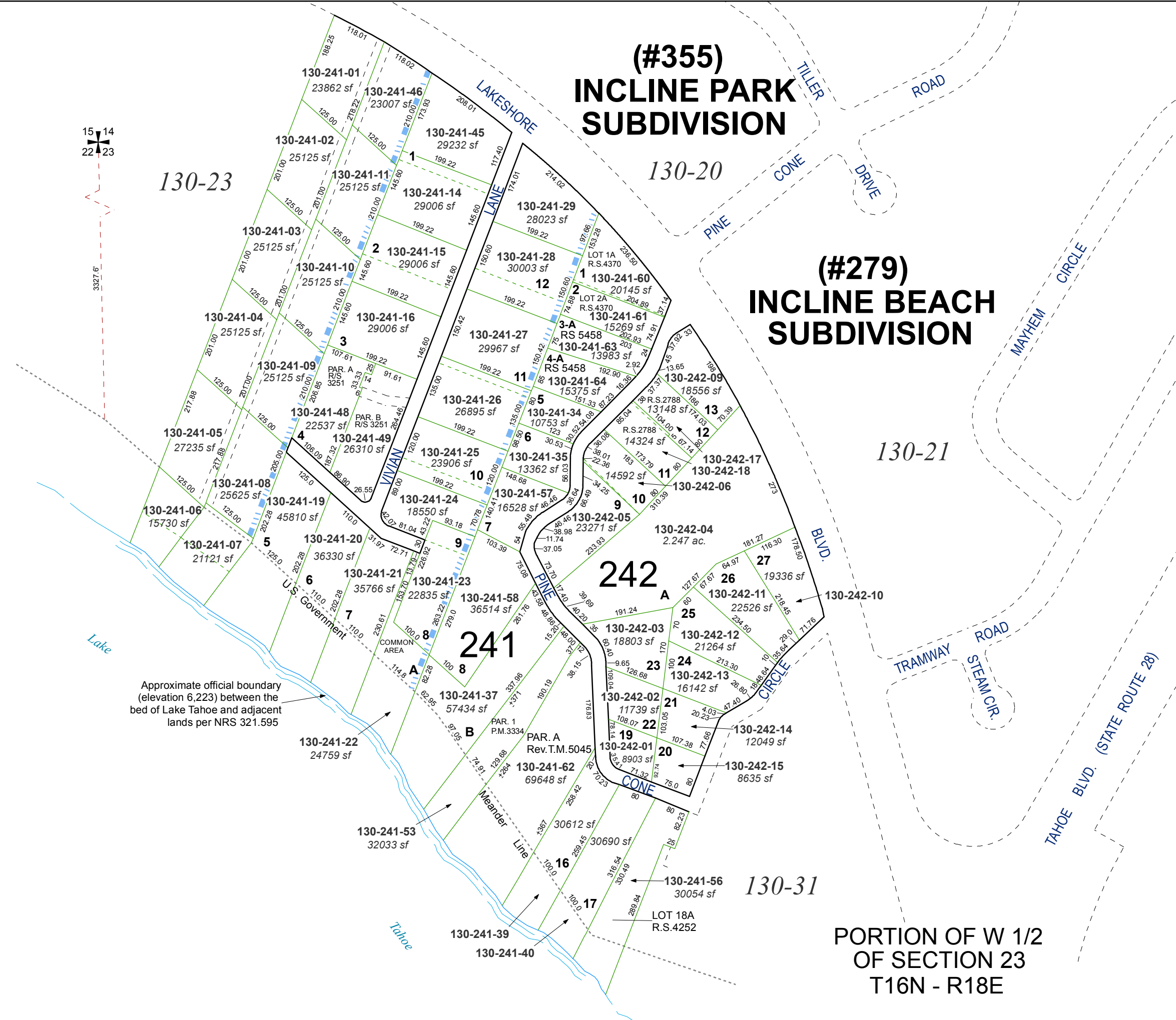
last updated: CFB 06/16/2013, 02/04/2014

area previously shown on map(s)

NOTE: This map was prepared for the use of the Washoe County Assessor for assessment and illustrative purposes only. It does not represent a survey of the premises. No liability is assumed as to the sufficiency or accuracy of the data delineated hereon.

# (#355) INCLINE PARK SUBDIVISION

# (#279) INCLINE BEACH SUBDIVISION



Approximate official boundary  
(elevation 6,223) between the  
bed of Lake Tahoe and adjacent  
lands per NRS 321.595

PORTION OF W 1/2  
OF SECTION 23  
T16N - R18E