

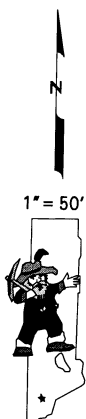
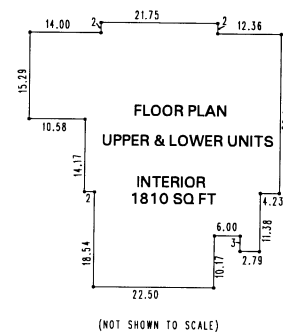
**(3445)
CRYSTAL VIEW CONDOMINIUMS**

PORTION OF NW 1/4 OF SECTION 30
T16N - R18E

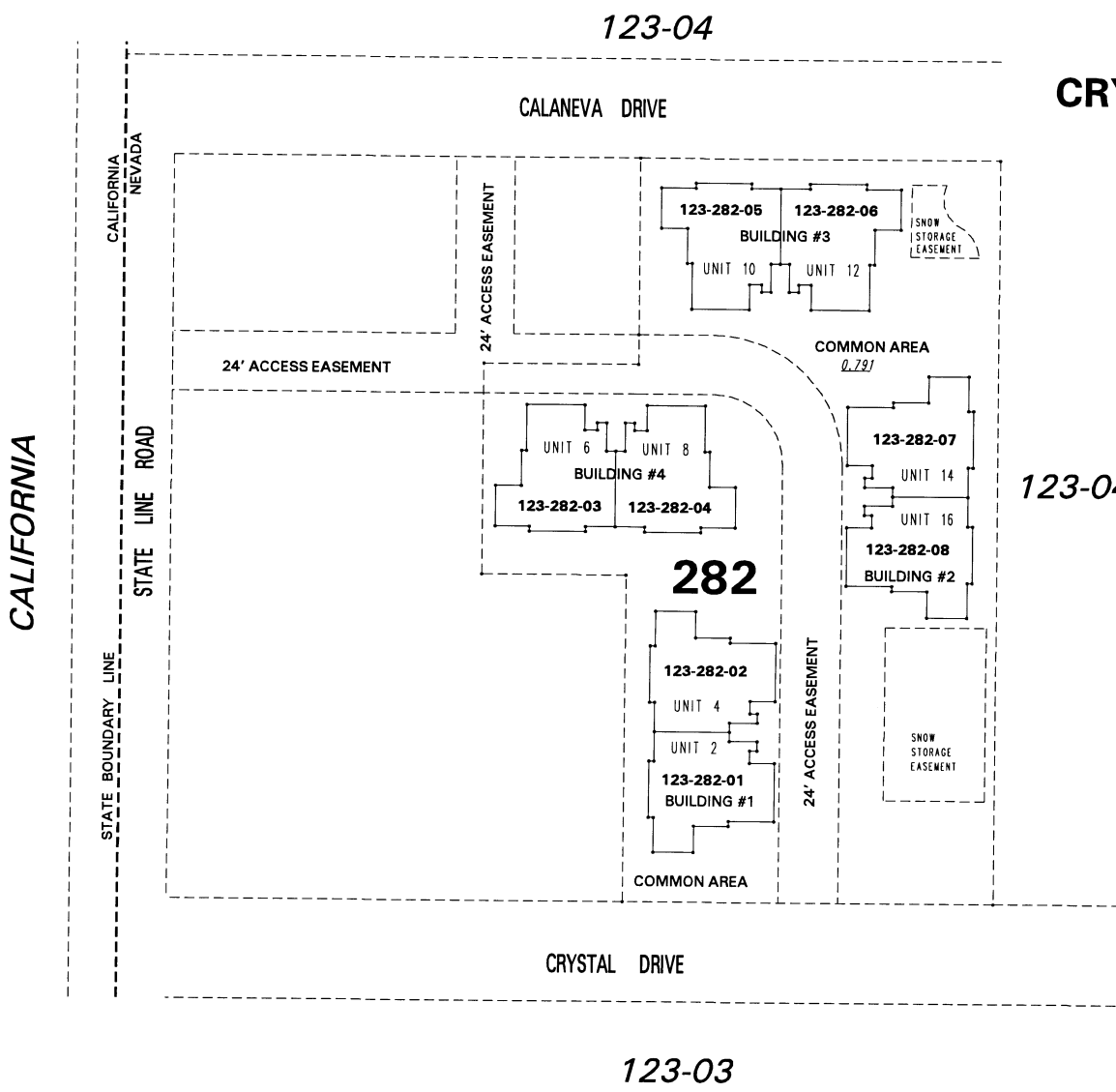
UPPER LEVEL UNITS

A 1/16th INTEREST EACH IN
COMMON AREA

123-04



Drawn by DSR 09/11/97
Revised HCS 4/29/02



NOTE: This map is prepared for the use of the Washoe County Assessor for assessment and illustrative purposes only. It does not represent a survey of the premises. No liability is assumed as to the sufficiency or the accuracy of the data delineated hereon.

Office of Washoe County Assessor, Nevada - Robert W. McGowan

This area previously shown on 123-04

NOTE: Areas of parcels which are less than 2 acres are shown in square feet.