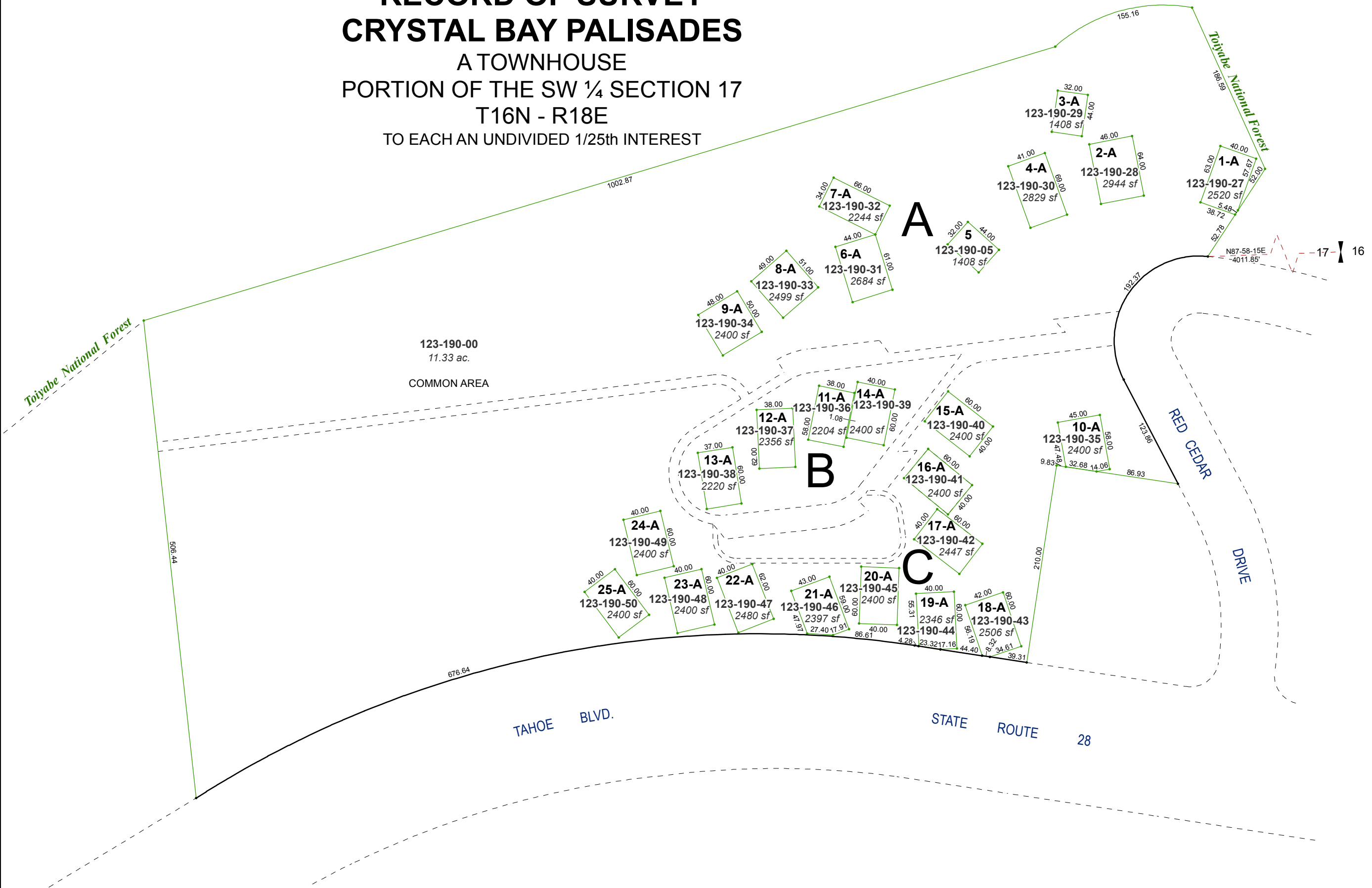


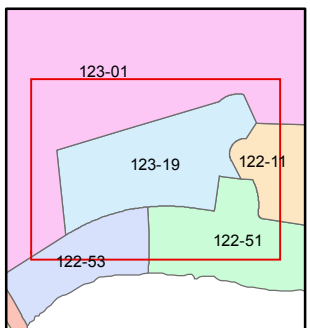
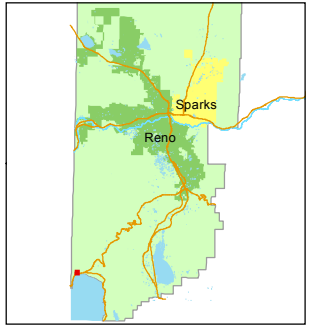
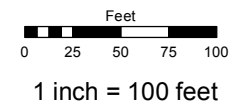
**(#3772)**  
**RECORD OF SURVEY**  
**CRYSTAL BAY PALISADES**  
 A TOWNHOUSE  
 PORTION OF THE SW ¼ SECTION 17  
 T16N - R18E  
 TO EACH AN UNDIVIDED 1/25th INTEREST



Assessor's Map Number  
**123-19**

STATE OF NEVADA  
**WASHOE COUNTY**  
**ASSESSOR'S OFFICE**  
 Joshua G. Wilson, Assessor

1001 East Ninth Street  
 Building D  
 Reno, Nevada 89512  
 (775) 328-2231



created by: EMG 9/11/2014

last updated: \_\_\_\_\_

area previously shown on map(s)  
 \_\_\_\_\_

NOTE: This map was prepared for the use of the Washoe County Assessor for assessment and illustrative purposes only. It does not represent a survey of the premises. No liability is assumed as to the sufficiency or accuracy of the data delineated hereon.