

CRYSTAL BAY PARK UNIT NO. 1

(UNOFFICIAL SUBDIVISION)

PORTION SEC. 19
T16N - R18E

(#914)
CAL-NEVA
HIGHLANDS
UNIT NO.2

(#920)
NORTH LAKE
SUBDIVISION

Assessor's Map Number
123-16

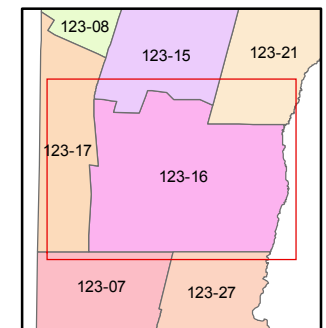
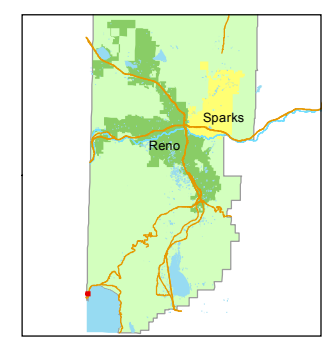
STATE OF NEVADA
WASHOE COUNTY
ASSESSOR'S OFFICE
Joshua G. Wilson, Assessor

1001 East Ninth Street
Building D
Reno, Nevada 89512
(775) 328-2231



0 25 50 75 100
Feet

1 inch = 100 feet

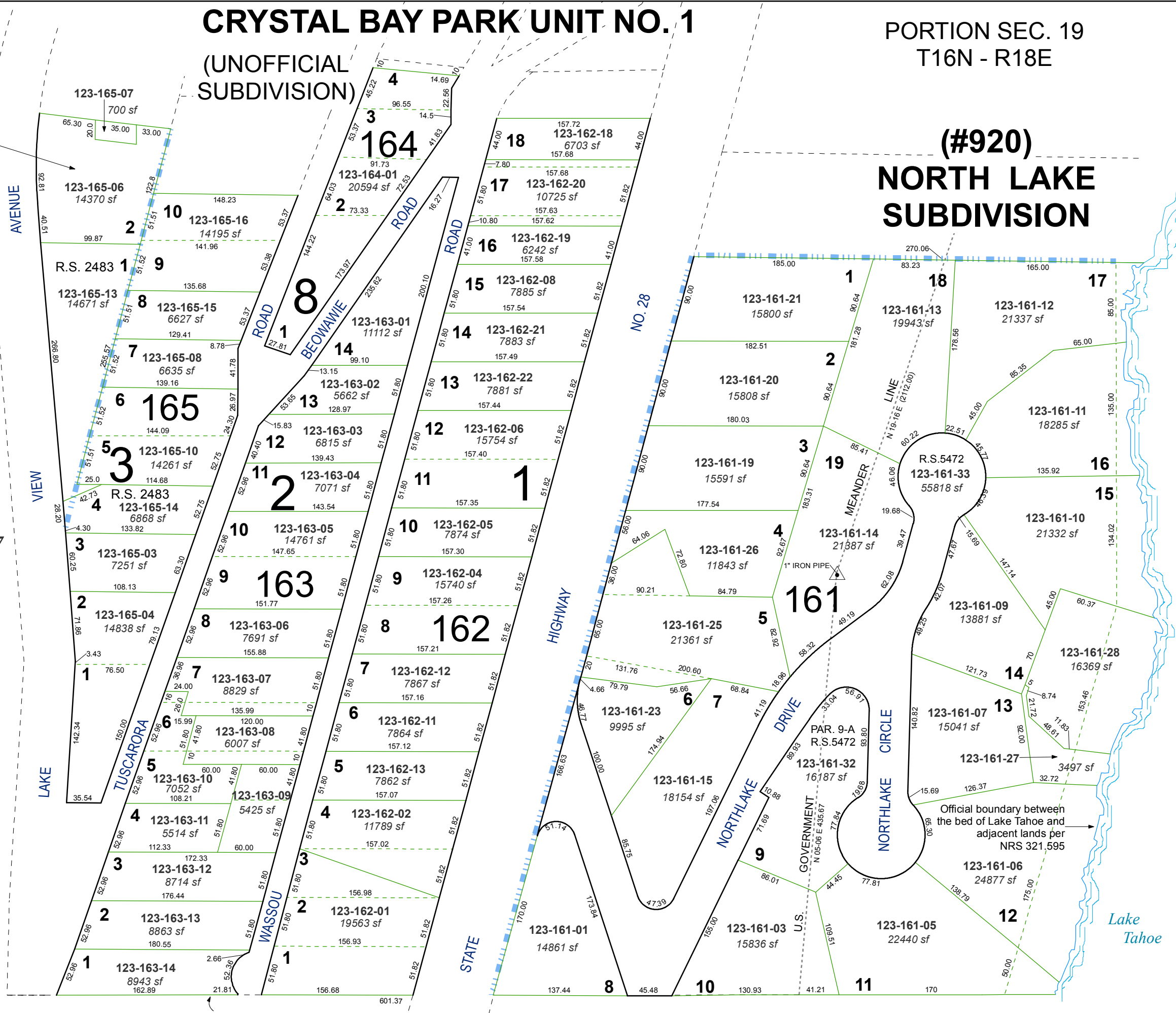


created by: CFB 06/08/2010

last updated: CFB 04/09/2013

area previously shown on map(s)

NOTE: This map was prepared for the use of the Washoe County Assessor for assessment and illustrative purposes only. It does not represent a survey of the premises. No liability is assumed as to the sufficiency or accuracy of the data delineated hereon.



123-17

SW CORNER LOT III