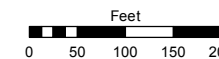


Assessor's Map Number

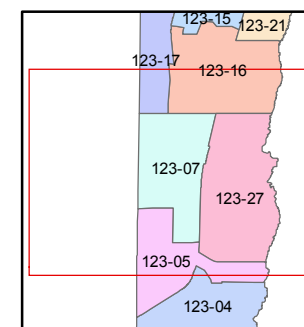
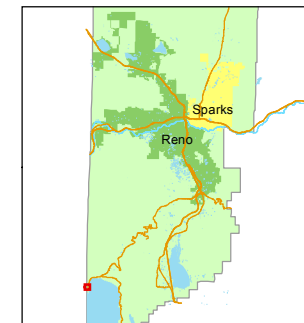
123-07

STATE OF NEVADA
WASHOE COUNTY
ASSESSOR'S OFFICE
Michael E. Clark, Assessor

1001 East Ninth Street
Building D
Reno, Nevada 89512
(775) 328-2231



1 inch = 200 feet



created by: EMG 9/30/2014

last updated: KSB 7/18/16

area previously shown on map(s)

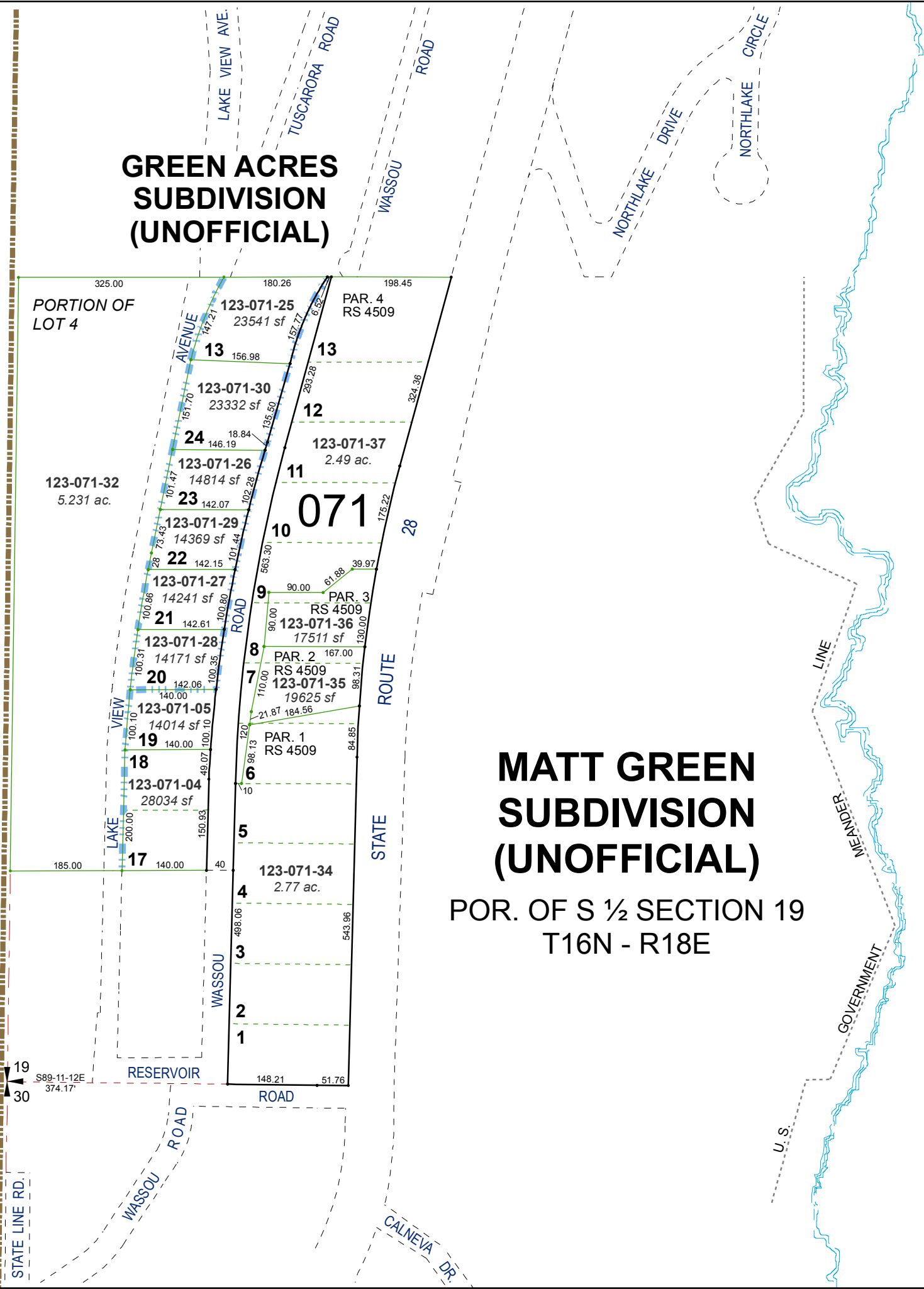
NOTE: This map was prepared for the use of the Washoe County Assessor for assessment and illustrative purposes only. It does not represent a survey of the premises. No liability is assumed as to the sufficiency or accuracy of the data delineated hereon.

CALIFORNIA

**GREEN ACRES
SUBDIVISION
(UNOFFICIAL)**

**MATT GREEN
SUBDIVISION
(UNOFFICIAL)**

POR. OF S 1/2 SECTION 19
T16N - R18E



STATE LINE RD.

19
30
S89-11.12E
374.17'

RESERVOIR

ROAD

CALNEVA DR.

U.S.

GOVERNMENT

LAKE
TAHOE

MEANDER

STATE
ROUTE

071

10

11

12

13

13

13

13

13

13

13

13

PORTION OF
LOT 4

123-071-32
5.231 ac.

123-071-25
23541 sf

123-071-30
23332 sf

123-071-26
14814 sf

123-071-29
14369 sf

123-071-27
14241 sf

123-071-28
14171 sf

123-071-05
14014 sf

123-071-04
28034 sf

123-071-34
2.77 ac.

123-071-35
19625 sf

123-071-36
17511 sf

123-071-37
2.49 ac.

123-071-25
23541 sf

PAR. 4
RS 4509

PAR. 3
RS 4509

PAR. 2
RS 4509

PAR. 1
RS 4509

PAR. 1
RS 4509

PAR. 2
RS 4509

PAR. 3
RS 4509

PAR. 4
RS 4509

PAR. 4
RS 4509

PAR. 4
RS 4509

PAR. 4
RS 4509