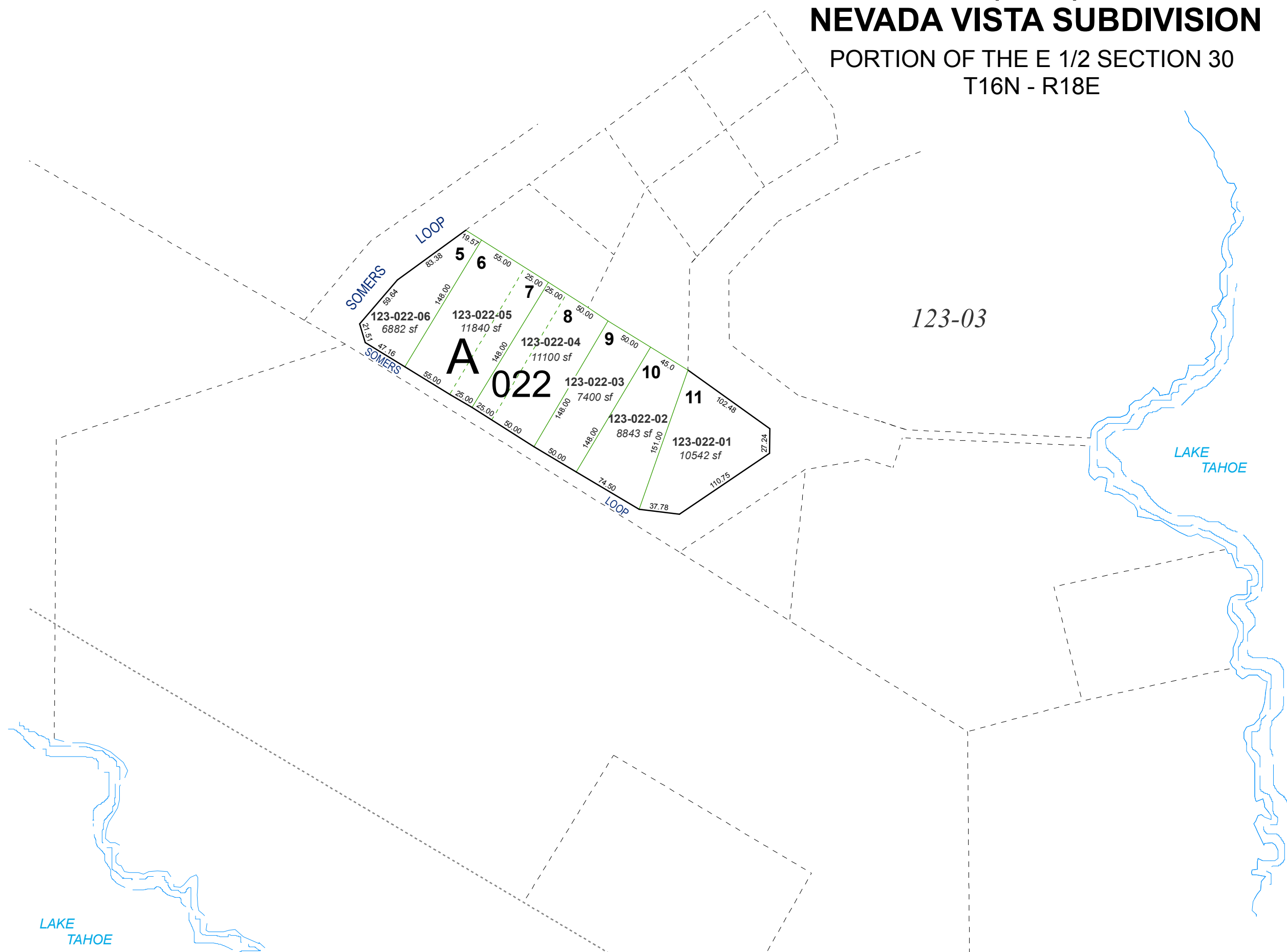


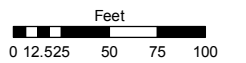
(#198)
NEVADA VISTA SUBDIVISION
 PORTION OF THE E 1/2 SECTION 30
 T16N - R18E



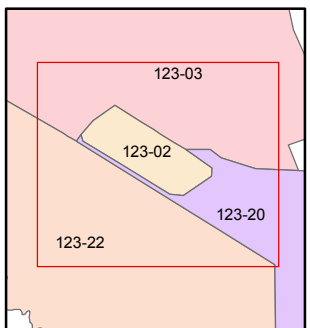
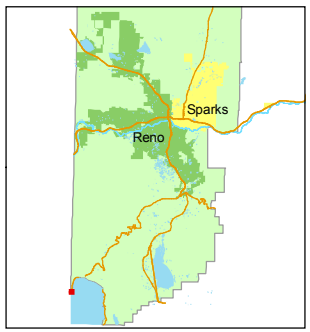
Assessor's Map Number
123-02

STATE OF NEVADA
WASHOE COUNTY
ASSESSOR'S OFFICE
 Joshua G. Wilson, Assessor

1001 East Ninth Street
 Building D
 Reno, Nevada 89512
 (775) 328-2231



1 inch = 100 feet



created by: CFB 05/26/2010

last updated: _____

area previously shown on map(s)
123-02

NOTE: This map was prepared for the use of the Washoe County Assessor for assessment and illustrative purposes only. It does not represent a survey of the premises. No liability is assumed as to the sufficiency or accuracy of the data delineated hereon.