

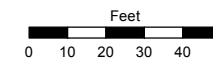
**(#909)
CRYSTAL SHORES WEST
A CONDOMINIUM**

STATE ROUTE 28

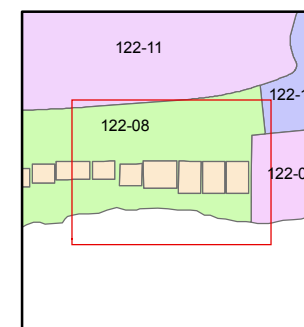
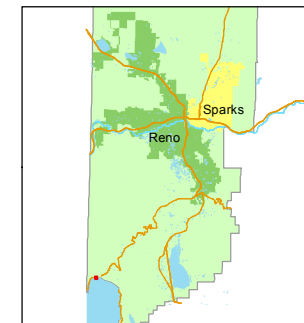
PORTION OF SEC. 17, T16N - R18E

STATE OF NEVADA
WASHOE COUNTY
ASSESSOR'S OFFICE
Joshua G. Wilson, Assessor

1001 East Ninth Street
Building D
Reno, Nevada 89512
(775) 328-2231



1 inch = 50 feet



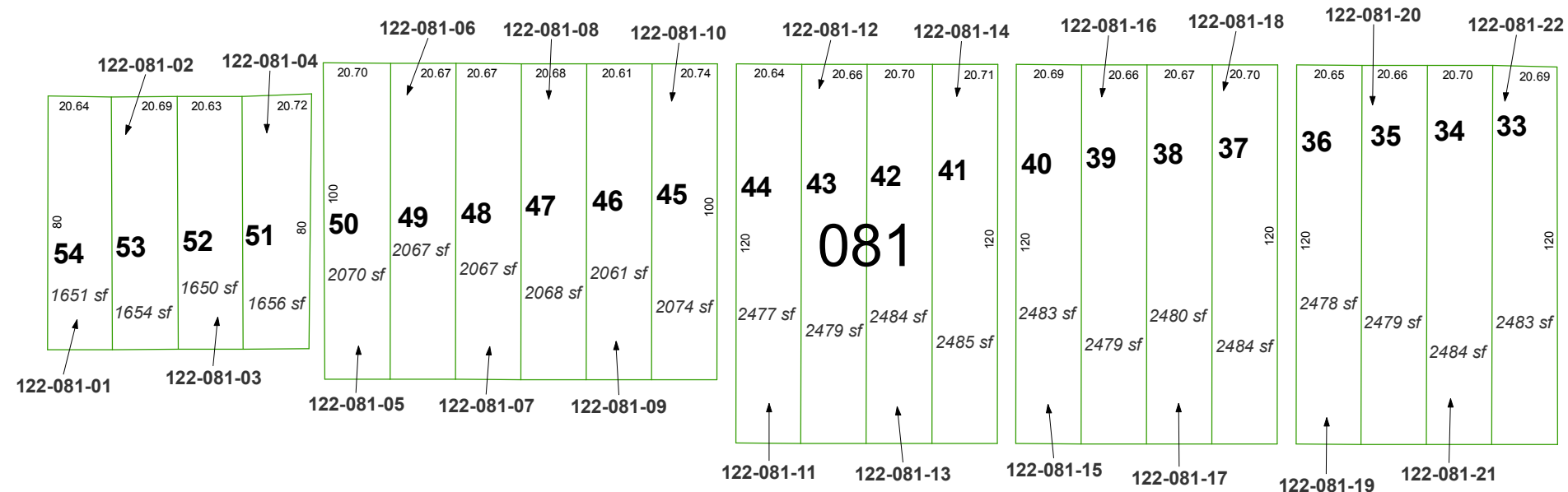
created by: CFB 09/20/2011

last updated: _____

area previously shown on map(s)

A 1/144th interest to each unit
in the Common Area
(shown on 122-08)

COMMON AREA



Lake Tahoe

NOTE: This map was prepared for the use of the Washoe County Assessor for assessment and illustrative purposes only. It does not represent a survey of the premises. No liability is assumed as to the sufficiency or accuracy of the data delineated hereon.