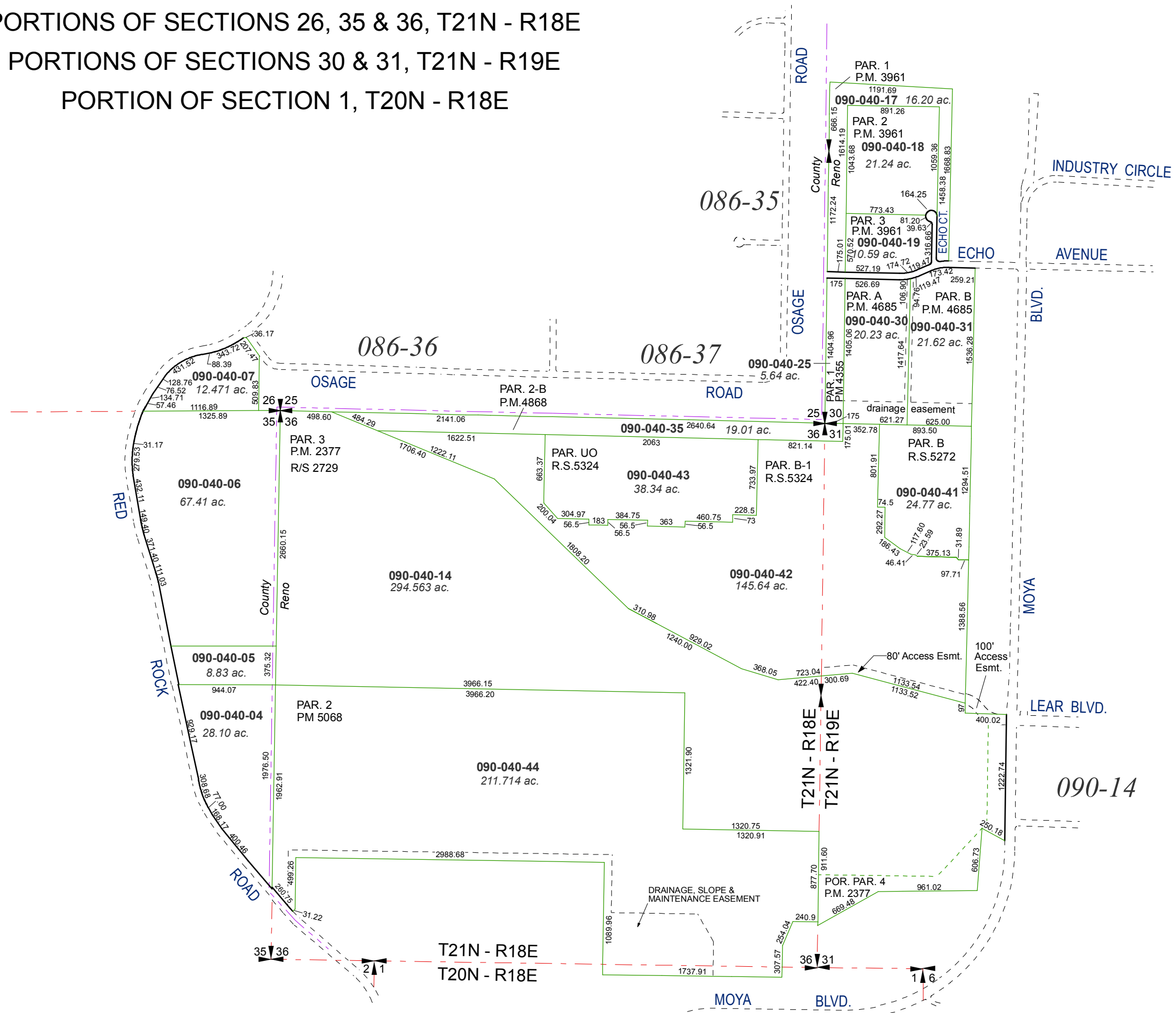


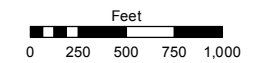
PORTIONS OF SECTIONS 26, 35 & 36, T21N - R18E  
 PORTIONS OF SECTIONS 30 & 31, T21N - R19E  
 PORTION OF SECTION 1, T20N - R18E



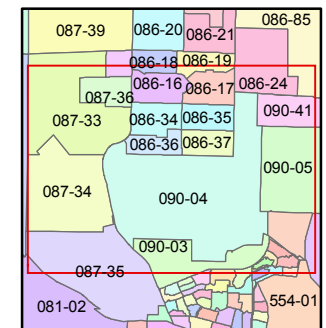
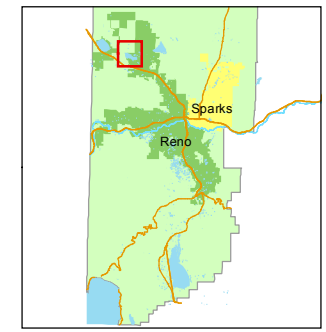
Assessor's Map Number  
**090-04**

STATE OF NEVADA  
**WASHOE COUNTY**  
 ASSESSOR'S OFFICE  
 Joshua G. Wilson, Assessor

1001 East Ninth Street  
 Building D  
 Reno, Nevada 89512  
 (775) 328-2231



1 inch = 1,000 feet



created by: CFB 11/01/2010  
 last updated: CFB 6/02/11 KSB 5/25/12

area previously shown on map(s)

NOTE: This map was prepared for the use of the Washoe County Assessor for assessment and illustrative purposes only. It does not represent a survey of the premises. No liability is assumed as to the sufficiency or accuracy of the data delineated hereon.