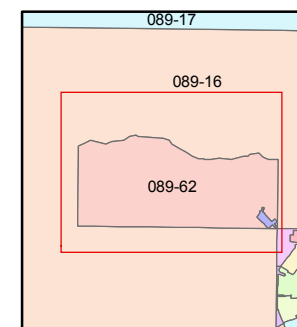
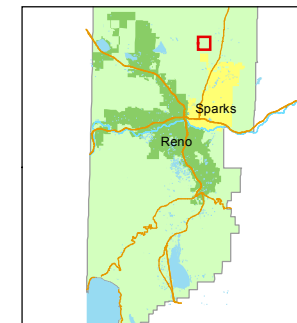


1 inch = 400 feet



created by: TWT 11/30/2011

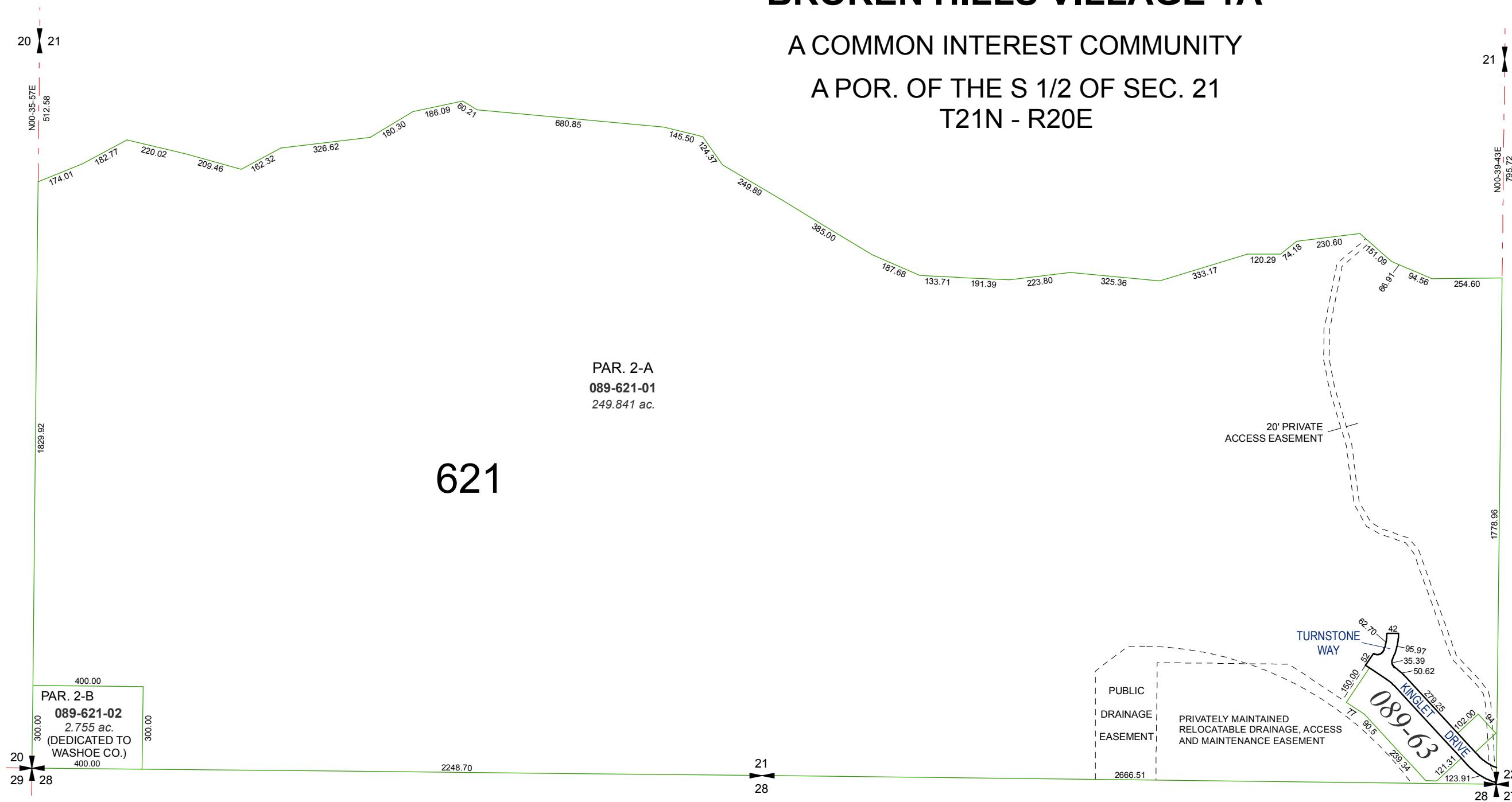
last updated:

area previously shown on map(s)

089-16

NOTE: This map was prepared for the use of the Washoe County Assessor for assessment and illustrative purposes only. It does not represent a survey of the premises. No liability is assumed as to the sufficiency or accuracy of the data delineated hereon.

**(#4821)**  
**BROKEN HILLS VILLAGE 1A**  
A COMMON INTEREST COMMUNITY  
A POR. OF THE S 1/2 OF SEC. 21  
T21N - R20E



PAR. 2-A  
089-621-01  
249.841 ac.

621

PAR. 2-B  
089-621-02  
2.755 ac.  
(DEDICATED TO  
WASHOE CO.)

PUBLIC  
DRAINAGE  
EASEMENT  
PRIVATELY MAINTAINED  
RELOCATABLE DRAINAGE, ACCESS  
AND MAINTENANCE EASEMENT

TURNSTONE  
WAY

089-63  
KINGLET  
DRIVE