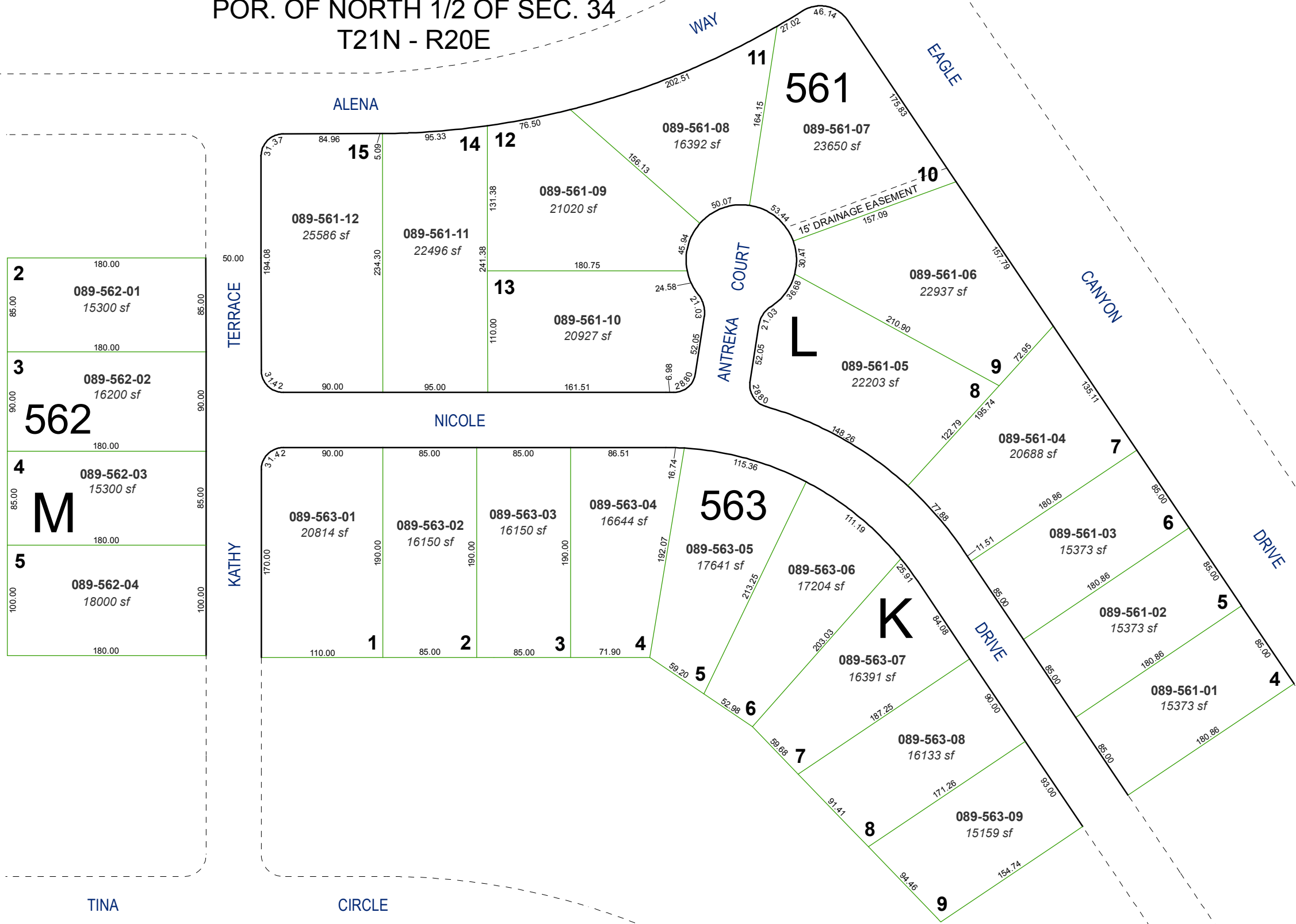


(#3065) SPANISH SPRINGS VILLAGE UNIT 6

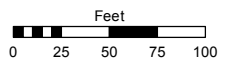
POR. OF NORTH 1/2 OF SEC. 34
T21N - R20E



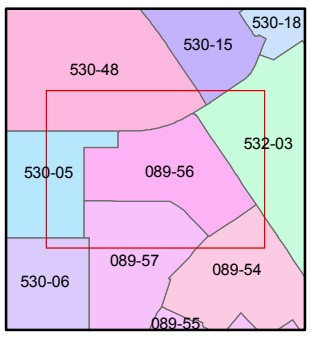
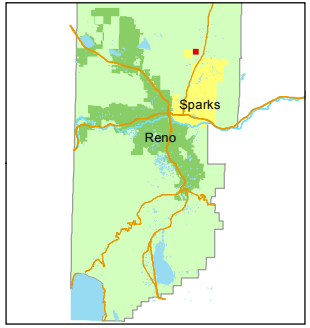
Assessor's Map Number
089-56

STATE OF NEVADA
WASHOE COUNTY
ASSESSOR'S OFFICE
Joshua G. Wilson, Assessor

1001 East Ninth Street
Building D
Reno, Nevada 89512
(775) 328-2231



1 inch = 100 feet



created by: TWT 1/3/2012

last updated: _____

area previously shown on map(s)
089-15

NOTE: This map was prepared for the use of the Washoe County Assessor for assessment and illustrative purposes only. It does not represent a survey of the premises. No liability is assumed as to the sufficiency or accuracy of the data delineated hereon.