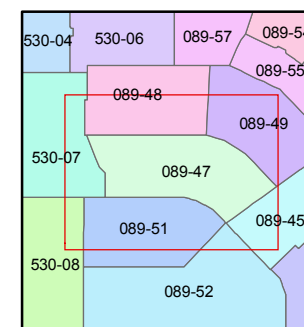
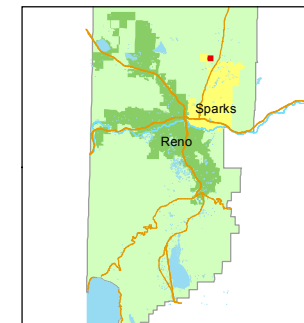


STATE OF NEVADA
WASHOE COUNTY
ASSESSOR'S OFFICE
Joshua G. Wilson, Assessor

1001 East Ninth Street
Building D
Reno, Nevada 89512
(775) 328-2231



1 inch = 100 feet



created by: TWT 1/5/2012

last updated: _____

area previously shown on map(s)

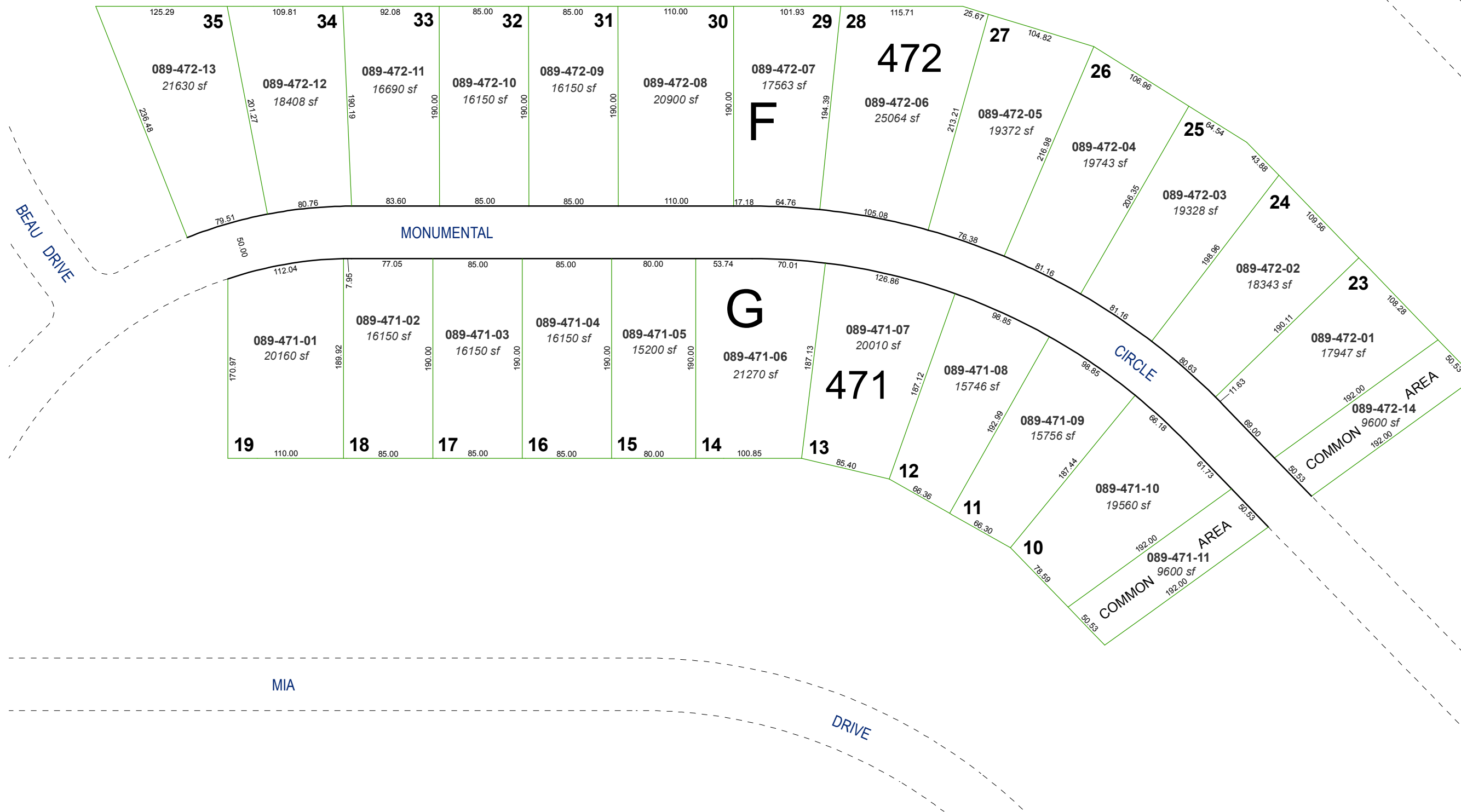
089-15

NOTE: This map was prepared for the use of the Washoe County Assessor for assessment and illustrative purposes only. It does not represent a survey of the premises. No liability is assumed as to the sufficiency or accuracy of the data delineated hereon.

VERONICA

(#2970) SPANISH SPRINGS VILLAGE UNIT 3

POR. OF SW 1/4 OF SEC. 34, T21N - R20E



125.29

35

089-472-13
21630 sf

109.81

34

089-472-12
18408 sf

92.08

33

089-472-11
16690 sf

85.00

32

089-472-10
16150 sf

85.00

31

089-472-09
16150 sf

110.00

30

089-472-08
20900 sf

101.93

29

089-472-07
17563 sf

115.71

28

472

089-472-06
25064 sf

25.67

27

089-472-05
19372 sf

104.82

26

089-472-04
19743 sf

106.96

25

089-472-03
19328 sf

64.54

24

089-472-02
18343 sf

43.68

23

089-472-01
17947 sf

109.56

22

089-472-14
9600 sf

109.28

21

089-471-11
9600 sf

50.53

20

089-471-10
19560 sf

67.73

19

089-471-09
15756 sf

112.04

18

089-471-08
15746 sf

77.05

17

089-471-07
20010 sf

85.00

16

089-471-06
21270 sf

85.00

15

089-471-05
15200 sf

80.00

14

089-471-04
16150 sf

53.74

13

089-471-03
16150 sf

70.01

12

089-471-02
16150 sf

126.86

11

089-471-01
20160 sf

187.12

10

089-471-01
20160 sf

85.40

9

089-471-01
20160 sf

66.36

8

089-471-01
20160 sf

78.59

7

089-471-01
20160 sf

50.53

6

089-471-01
20160 sf

192.00

5

089-471-01
20160 sf

192.00

4

089-471-01
20160 sf

192.00

3

089-471-01
20160 sf

192.00

2

089-471-01
20160 sf

192.00

1

089-471-01
20160 sf

192.00

0

089-471-01
20160 sf

192.00

0

089-471-01
20160 sf

192.00

0

089-471-01
20160 sf

192.00

0

089-471-01
20160 sf

192.00

0

089-471-01
20160 sf

192.00

0

089-471-01
20160 sf

192.00

0

089-471-01
20160 sf

192.00

0

089-471-01
20160 sf

192.00

0

089-471-01
20160 sf

192.00

0

089-471-01
20160 sf

192.00

0

089-471-01
20160 sf

192.00

0

089-471-01
20160 sf

192.00

0

089-471-01
20160 sf

192.00

0

089-471-01
20160 sf

192.00

0

089-471-01
20160 sf

192.00

0

089-471-01
20160 sf

192.00

0

089-471-01
20160 sf

192.00

0

089-471-01
20160 sf

192.00

0

089-471-01
20160 sf

192.00

0

089-471-01
20160 sf

192.00

0

089-471-01
20160 sf

192.00

0

089-471-01
20160 sf

192.00

0

089-471-01
20160 sf

192.00

0

089-471-01
20160 sf

192.00

0

089-471-01
20160 sf

192.00

0

089-471-01
20160 sf

192.00

0

089-471-01
20160 sf

192.00

0

089-471-01
20160 sf

192.00

0

089-471-01
20160 sf

192.00

0

089-471-01
20160 sf

192.00

0

089-471-01
20160 sf

192.00

0

089-471-01
20160 sf

192.00

0

089-471-01
20160 sf

192.00

0

089-471-01
20160 sf

192.00

0

089-471-01
20160 sf

192.00

0

089-471-01
20160 sf

192.00

0

089-471-01
20160 sf

192.00

0

089-471-01
20160 sf

192.00

0

089-471-01
20160 sf

192.00

0

089-471-01
20160 sf

192.00

0

089-471-01
20160 sf

192.00

0

089-471-01
20160 sf

192.00

0

089-471-01
20160 sf

192.00

0

089-471-01
20160 sf

192.00

0

089-471-01
20160 sf

192.00

0

089-471-01
20160 sf

192.00

0

089-471-01
20160 sf

192.00

0

089-471-01
20160 sf

192.00

0

089-471-01
20160 sf

192.00

0

089-471-01
20160 sf

192.00

0

089-471-01
20160 sf