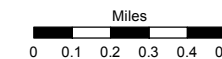
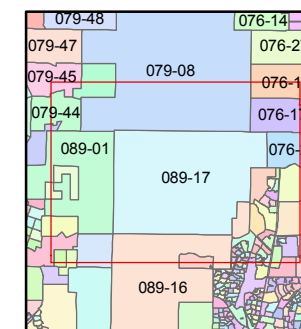
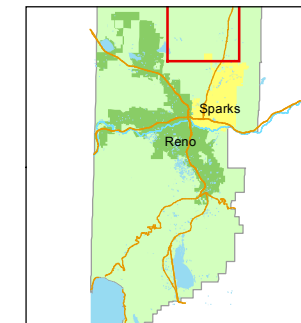


STATE OF NEVADA
WASHOE COUNTY
ASSESSOR'S OFFICE
Joshua G. Wilson, Assessor

1001 East Ninth Street
Building D
Reno, Nevada 89512
(775) 328-2231



1 inch = 2,640 feet



created by: TWT 11/30/2011

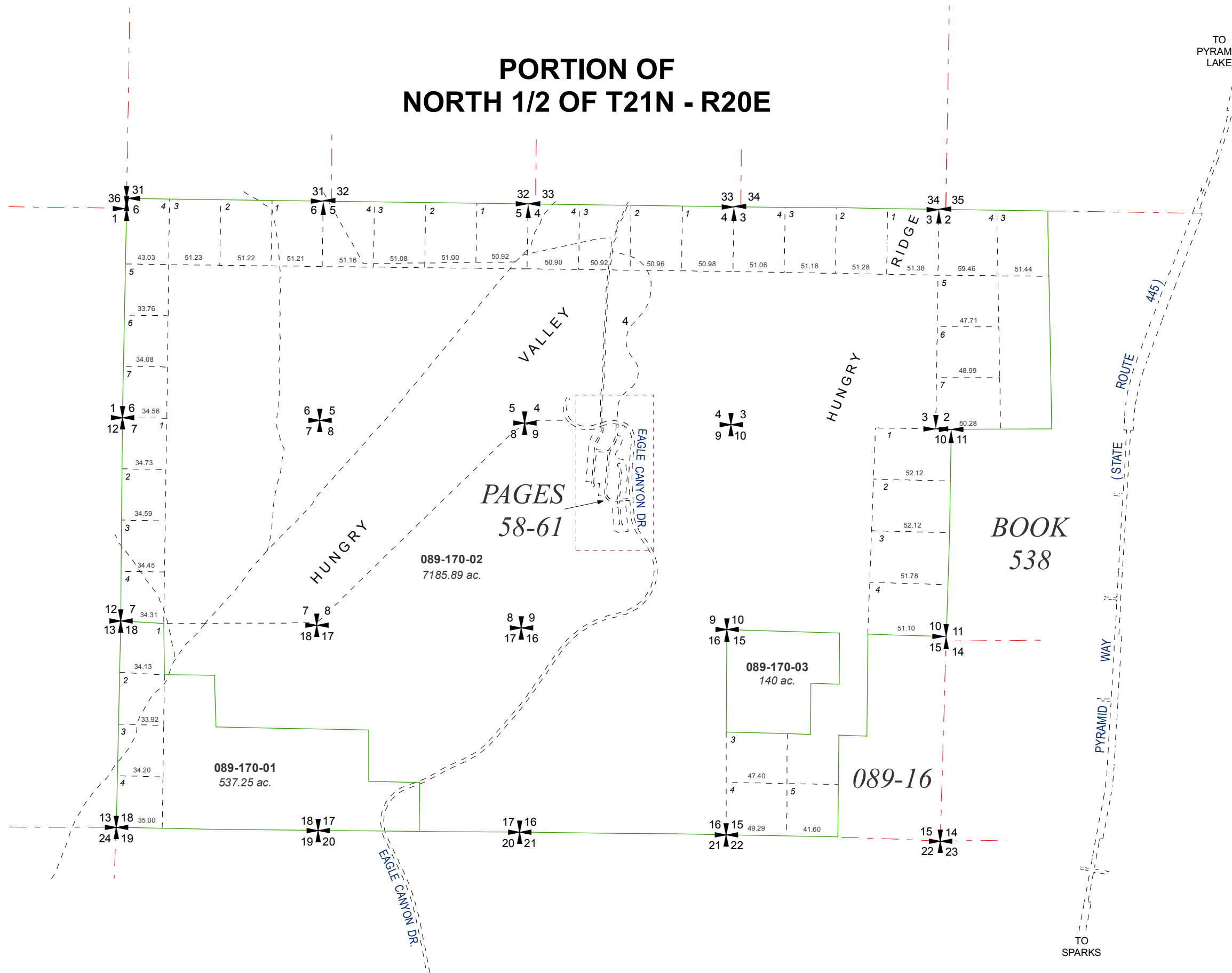
last updated:

area previously shown on map(s)

080-55

NOTE: This map was prepared for the use of the Washoe County Assessor for assessment and illustrative purposes only. It does not represent a survey of the premises. No liability is assumed as to the sufficiency or accuracy of the data delineated hereon.

PORTION OF NORTH 1/2 OF T21N - R20E



TO
PYRAMID
LAKE

ROUTE
445

(STATE

WAY

TO
SPARKS

**BOOK
538**

**PAGES
58-61**

**089-170-02
7185.89 ac.**

**089-170-03
140 ac.**

**089-170-01
537.25 ac.**

089-16