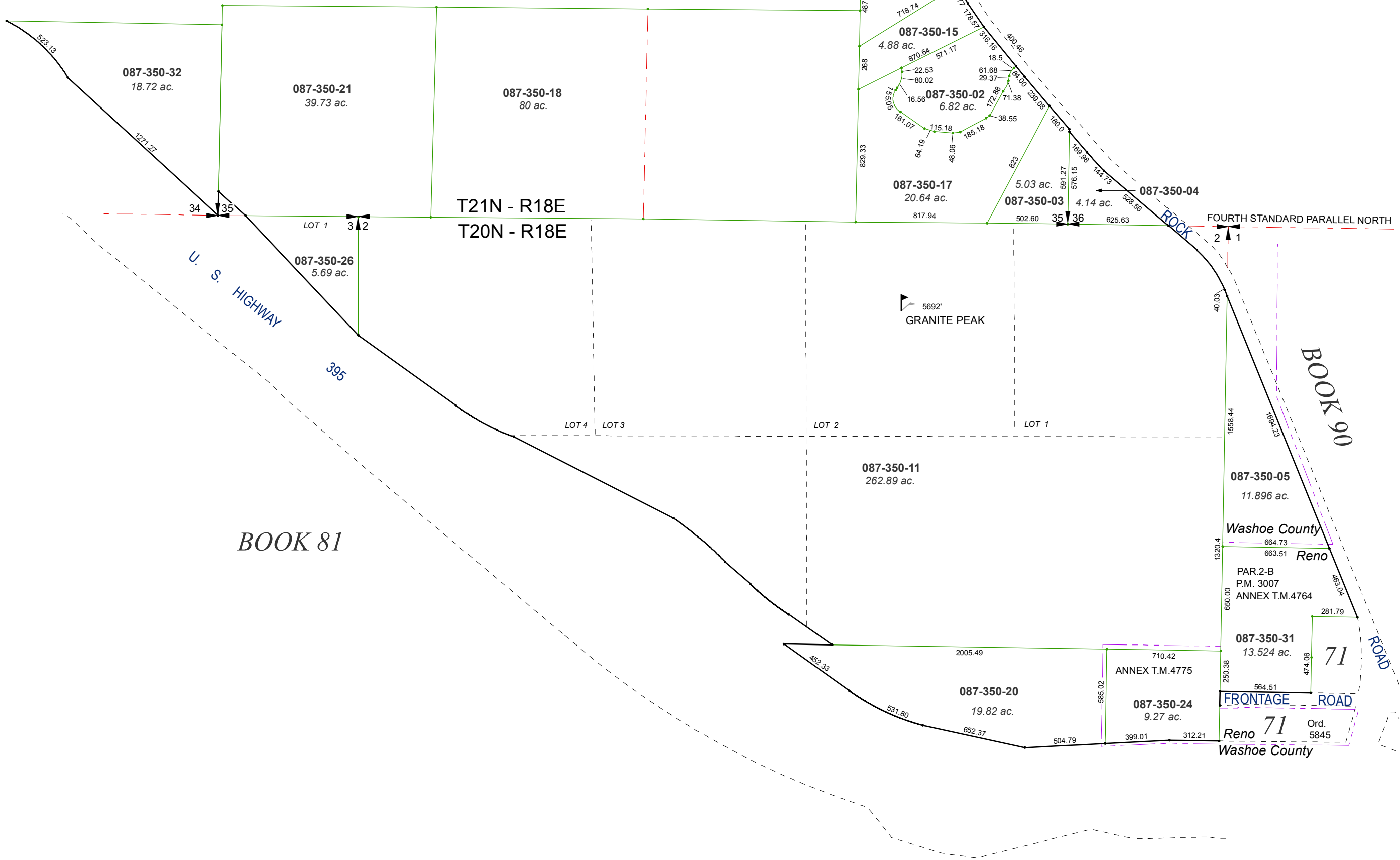


# PORTION SEC'S. 1, 2 & 3, T20N - R18E & PORTION SEC'S. 34, 35 & 36, T21N - R18E

34

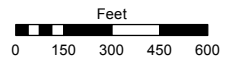


Assessor's Map Number

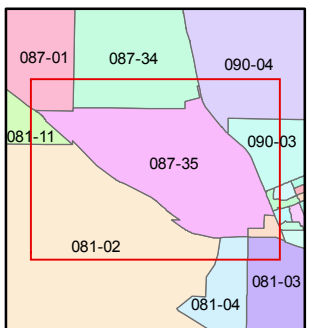
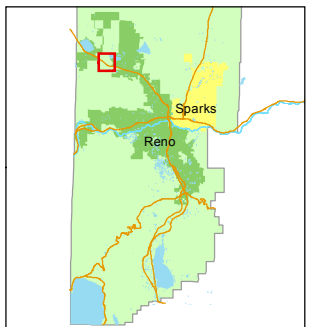
**087-35**

STATE OF NEVADA  
**WASHOE COUNTY**  
**ASSESSOR'S OFFICE**  
 Michael E. Clark, Assessor

1001 East Ninth Street  
 Building D  
 Reno, Nevada 89512  
 (775) 328-2231



1 inch = 600 feet



created by: CFB 03/22/2011

last updated: EMG 8/25/15

area previously shown on map(s)

087-01

NOTE: This map was prepared for the use of the Washoe County Assessor for assessment and illustrative purposes only. It does not represent a survey of the premises. No liability is assumed as to the sufficiency or accuracy of the data delineated hereon.