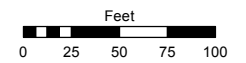


(#4210)
MEADOW STAR SUBDIVISION
POR. OF NW ¼ SEC. 5, T20N - R19E &
POR. OF SW ¼ SEC. 32, T21N - R19E

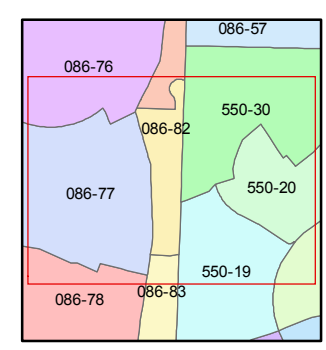
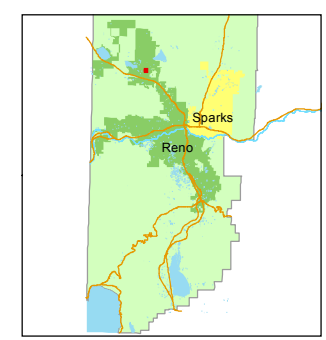
Assessor's Map Number
086-82

STATE OF NEVADA
WASHOE COUNTY
ASSESSOR'S OFFICE
Joshua G. Wilson, Assessor

1001 East Ninth Street
Building D
Reno, Nevada 89512
(775) 328-2231



1 inch = 100 feet



created by: KSB 8/15/2014

last updated: _____

area previously shown on map(s)
086-07

NOTE: This map was prepared for the use of the Washoe County Assessor for assessment and illustrative purposes only. It does not represent a survey of the premises. No liability is assumed as to the sufficiency or accuracy of the data delineated hereon.