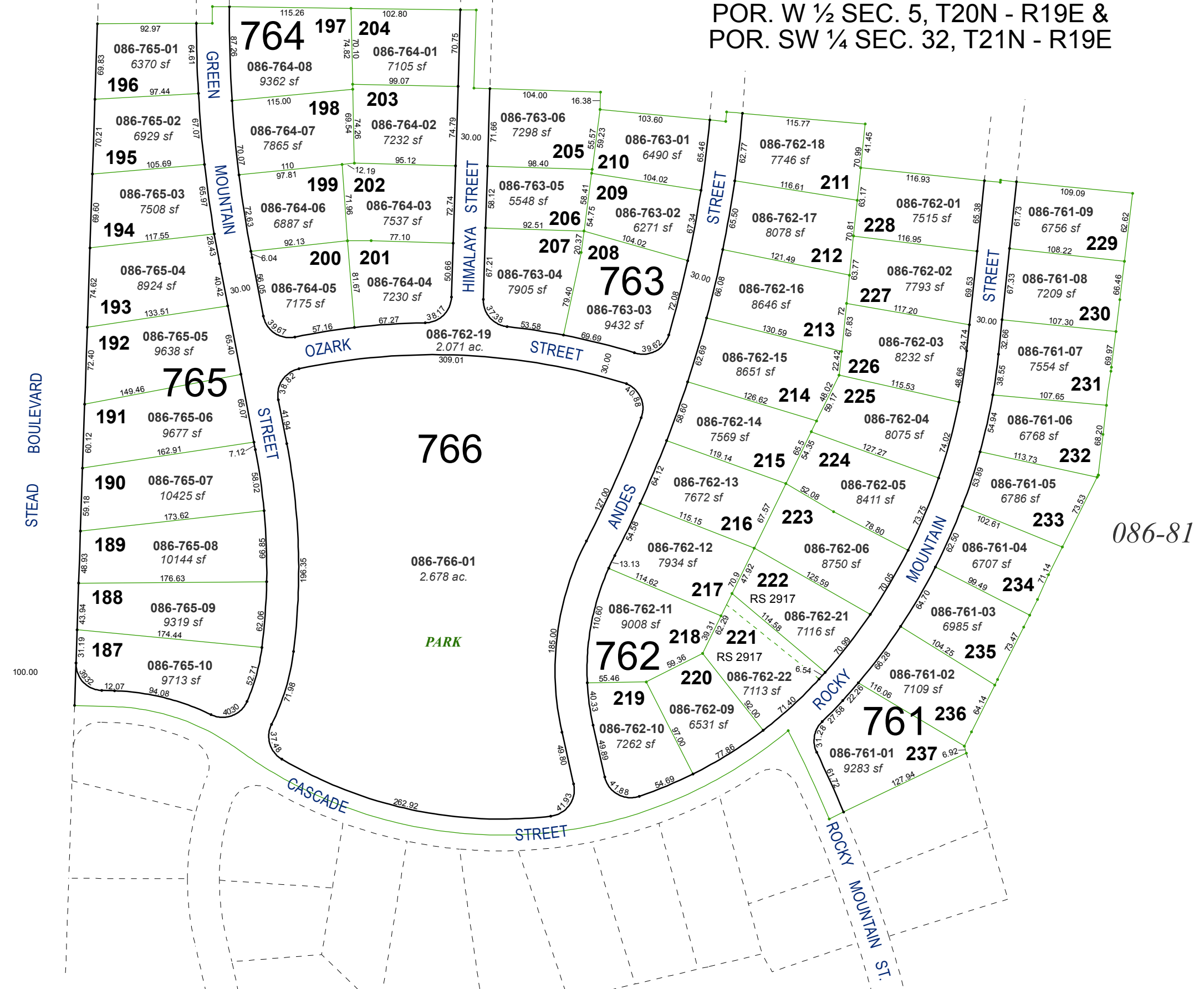


**(#2910)**  
**PEAVINE ESTATES**  
 AMENDMENT OF HAZELCREST NO. 1, NO. 2, NO. 3

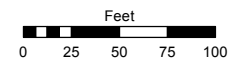
POR. W 1/2 SEC. 5, T20N - R19E &  
 POR. SW 1/4 SEC. 32, T21N - R19E



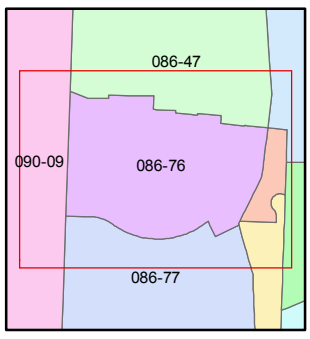
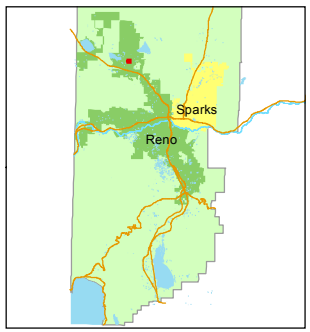
Assessor's Map Number  
**086-76**

STATE OF NEVADA  
**WASHOE COUNTY**  
 ASSESSOR'S OFFICE  
 Joshua G. Wilson, Assessor

1001 East Ninth Street  
 Building D  
 Reno, Nevada 89512  
 (775) 328-2231



1 inch = 100 feet



created by: KSB 8/14/2014  
 last updated: \_\_\_\_\_  
 area previously shown on map(s)  
086-46

NOTE: This map was prepared for the use of the Washoe County Assessor for assessment and illustrative purposes only. It does not represent a survey of the premises. No liability is assumed as to the sufficiency or accuracy of the data delineated hereon.