

HAZELCREST NO. 4 (#1501)

A DENSITY SUBDIVISION

POR. OF SW 1/4 SEC. 32, T21N - R19E

Assessor's Map Number

086-47-S1

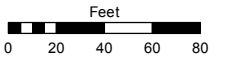
STATE OF NEVADA

WASHOE COUNTY

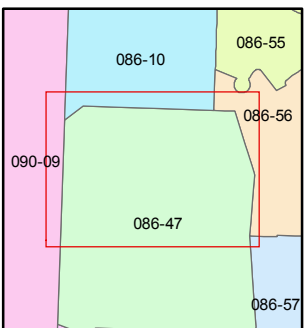
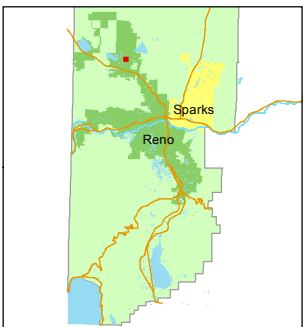
ASSESSOR'S OFFICE

Joshua G. Wilson, Assessor

1001 East Ninth Street
Building D
Reno, Nevada 89512
(775) 328-2231



1 inch = 80 feet



created by: KSB 8/13/2014

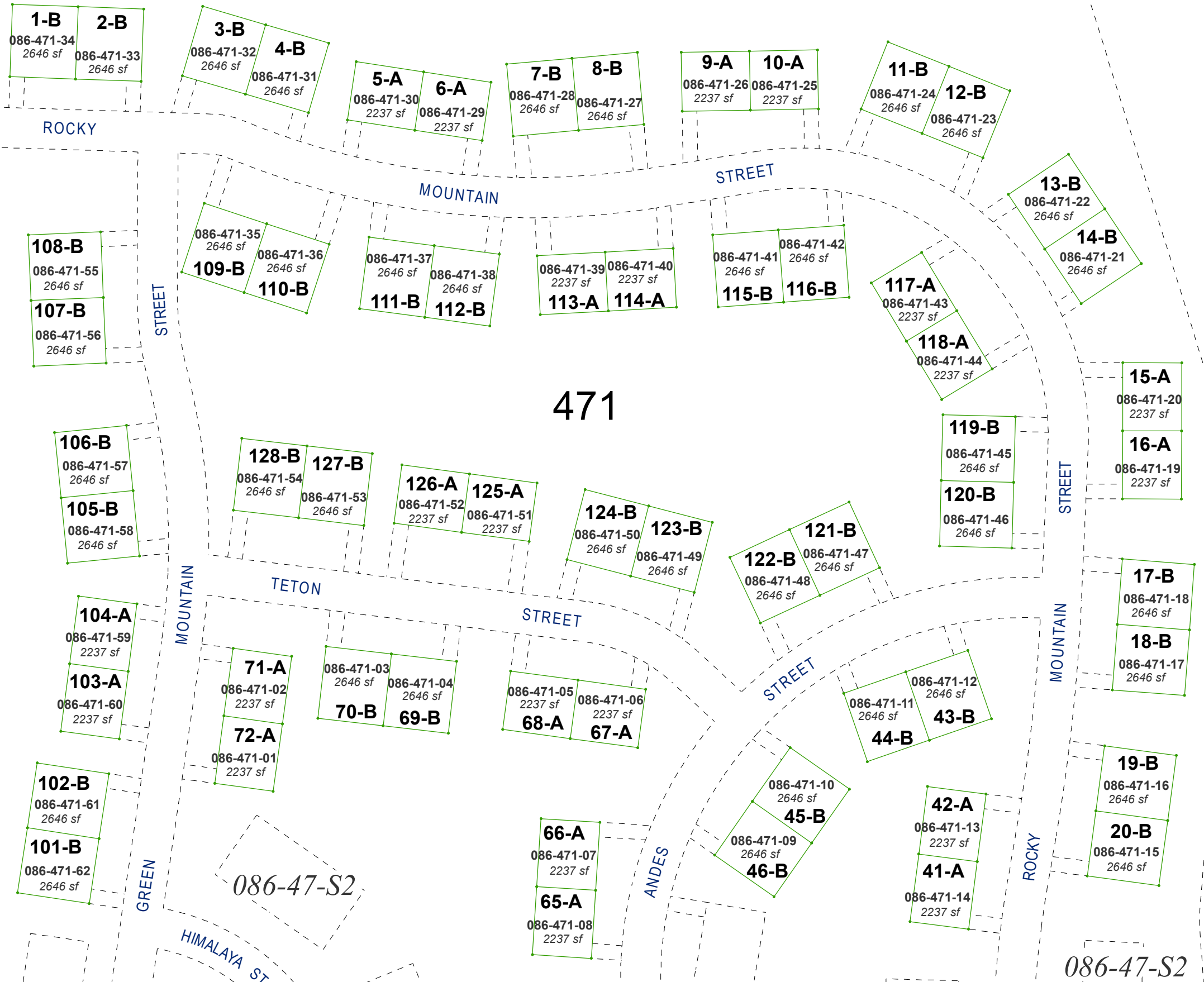
last updated: _____

area previously shown on map(s) _____

NOTE: This map was prepared for the use of the Washoe County Assessor for assessment and illustrative purposes only. It does not represent a survey of the premises. No liability is assumed as to the sufficiency or accuracy of the data delineated hereon.

BOULEVARD

STEAD



113-A
↑
LOT NUMBER UNIT TYPE

086-47-S2