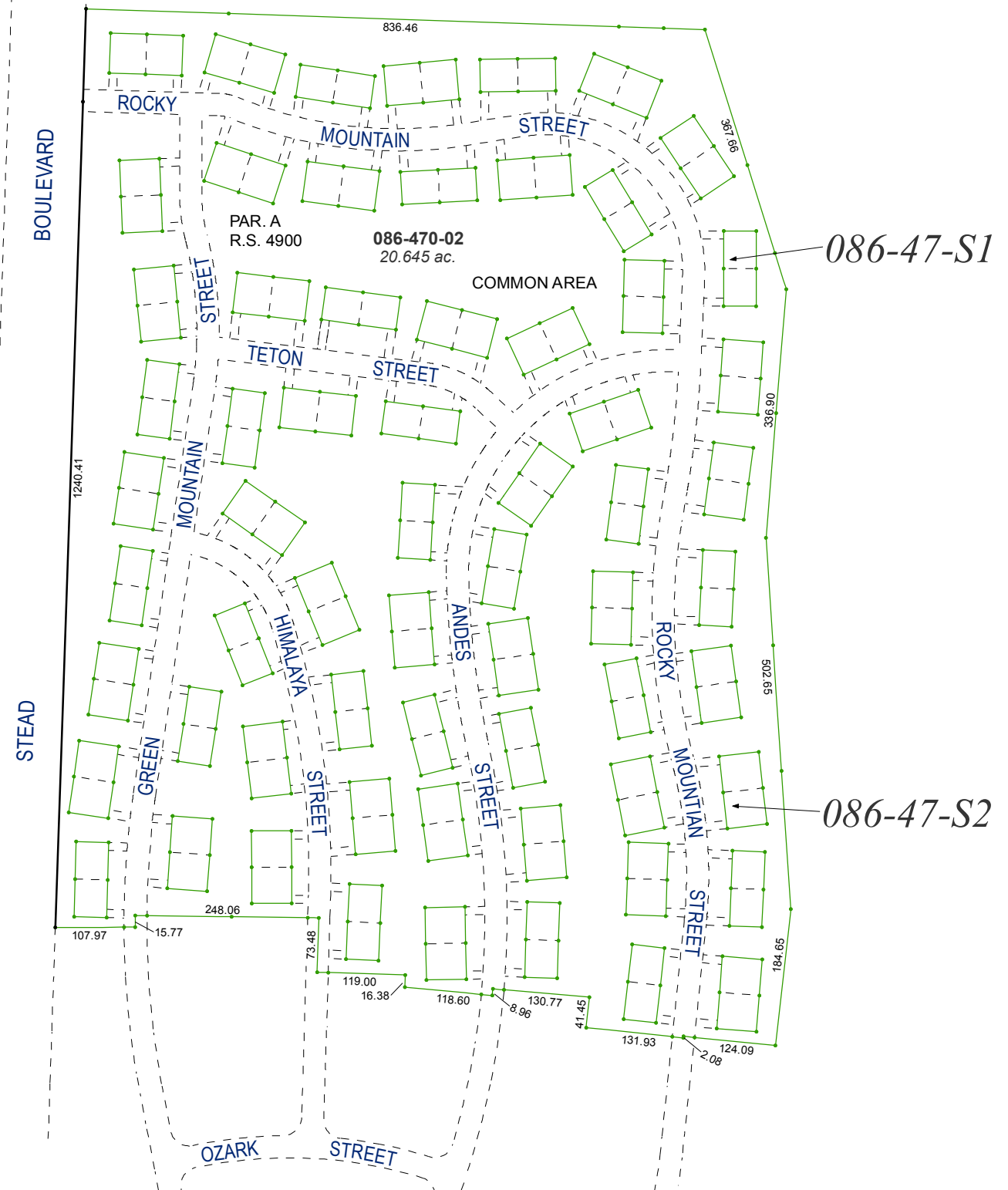
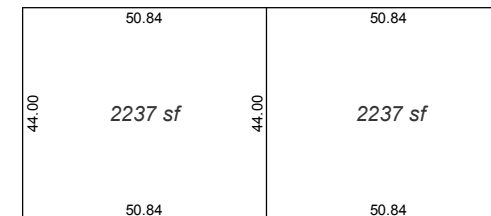


**(#1501)**  
**HAZELCREST NO. 4**  
 A DENSITY SUBDIVISION

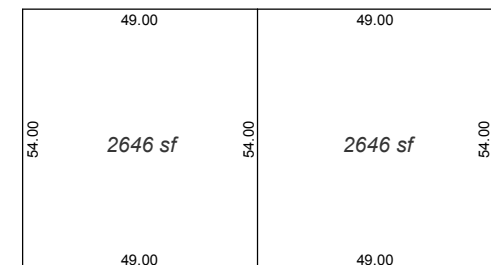
PORTION OF SW 1/4 OF SECTION 32  
 T21N - R19E



**TYPICAL UNITS**  
 (NOT TO SCALE)



"A" UNITS - 2 BEDROOM



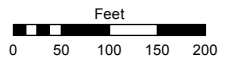
"B" UNITS - 3 BEDROOM

Assessor's Map Number

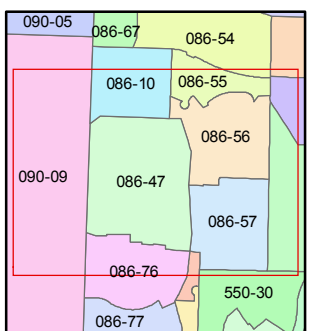
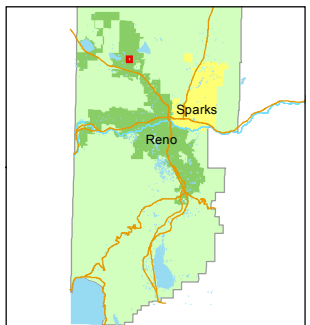
**086-47**

STATE OF NEVADA  
**WASHOE COUNTY**  
**ASSESSOR'S OFFICE**  
 Joshua G. Wilson, Assessor

1001 East Ninth Street  
 Building D  
 Reno, Nevada 89512  
 (775) 328-2231



1 inch = 200 feet



created by: KSB 8/13/2014

last updated: \_\_\_\_\_

area previously shown on map(s)  
 \_\_\_\_\_

NOTE: This map was prepared for the use of the Washoe County Assessor for assessment and illustrative purposes only. It does not represent a survey of the premises. No liability is assumed as to the sufficiency or accuracy of the data delineated hereon.