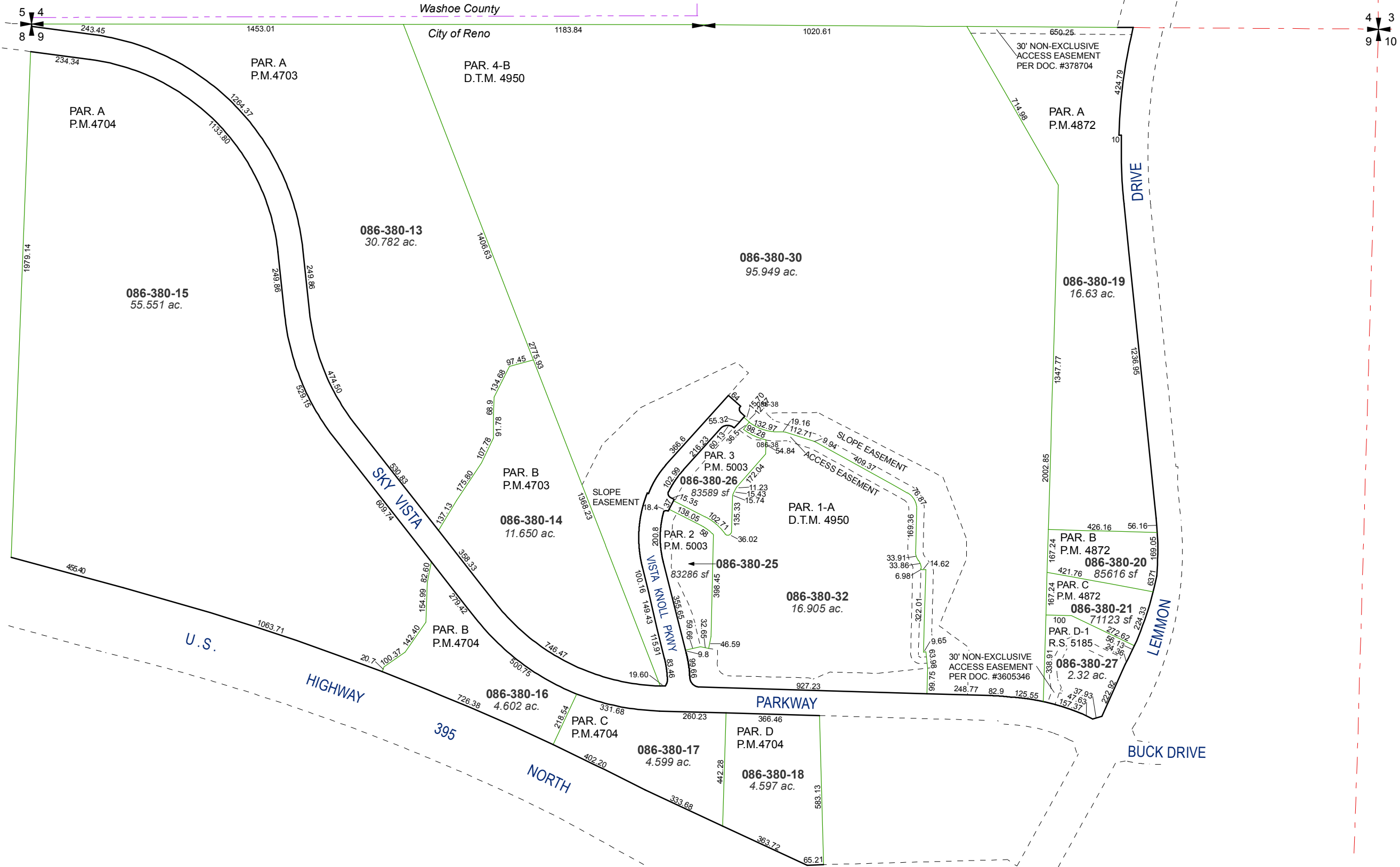


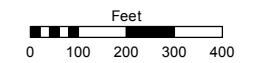
A POR. OF THE N 1/2 OF SEC. 9
T20N - R19E



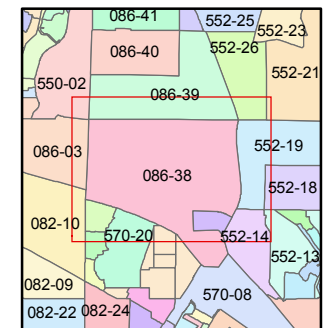
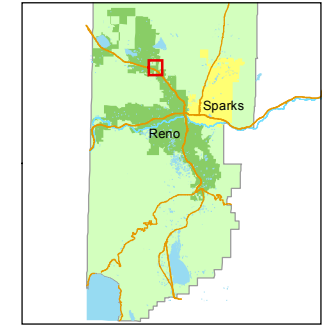
Assessor's Map Number
086-38

STATE OF NEVADA
WASHOE COUNTY
ASSESSOR'S OFFICE
Joshua G. Wilson, Assessor

1001 East Ninth Street
Building D
Reno, Nevada 89512
(775) 328-2231



1 inch = 400 feet



created by: NLH 7/07/2009
last updated: CFB 10/27/2011

area previously shown on map(s)

NOTE: This map was prepared for the use of the Washoe County Assessor for assessment and illustrative purposes only. It does not represent a survey of the premises. No liability is assumed as to the sufficiency or accuracy of the data delineated hereon.