

Assessor's Map Number

**086-24**

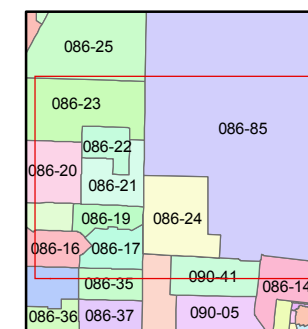
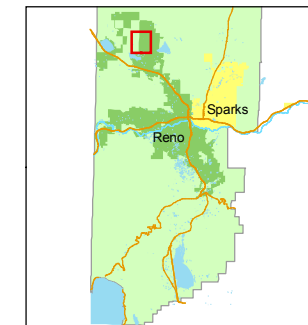
STATE OF NEVADA  
**WASHOE COUNTY**  
**ASSESSOR'S OFFICE**  
Joshua G. Wilson, Assessor

1001 East Ninth Street  
Building D  
Reno, Nevada 89512  
(775) 328-2231



Feet  
0 100 200 400 600 800

1 inch = 800 feet



created by: CFB 02/19/2010

last updated: \_\_\_\_\_

area previously shown on map(s)  
\_\_\_\_\_

NOTE: This map was prepared for the use of the Washoe County Assessor for assessment and illustrative purposes only. It does not represent a survey of the premises. No liability is assumed as to the sufficiency or accuracy of the data delineated hereon.

13 18  
24 19

18 17  
19 20

T21N - R18E  
T21N - R19E

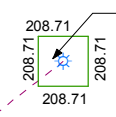
CITY LIMIT

CITY

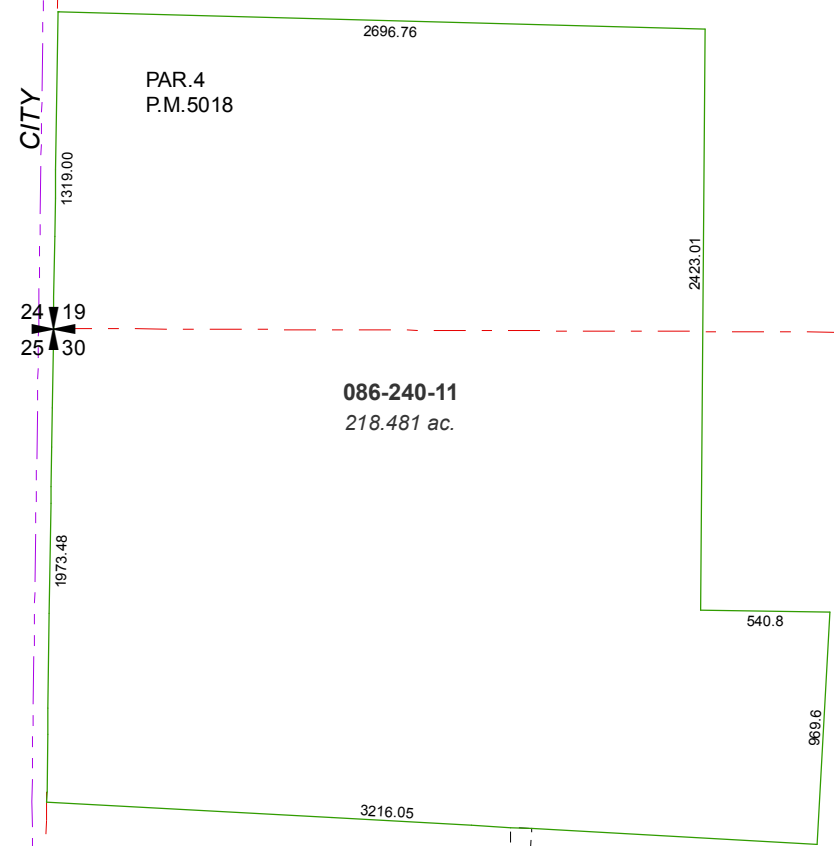
24 19  
25 30

19 20  
30 29

LEAR WELL #1  
086-240-07  
1.0 ac.



S 52°18'W  
1894.0



PAR. 4  
P.M. 5018

086-240-11  
218.481 ac.

PORTION OF SECTIONS 19 & 30  
T21N - R19E

MOYA  
BLVD.

