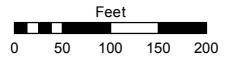


(#878)
SILVER KNOLLS ESTATES UNIT NO. 1
 PORTION OF THE NORTH ½ SECTION 25
 T21N - R18E

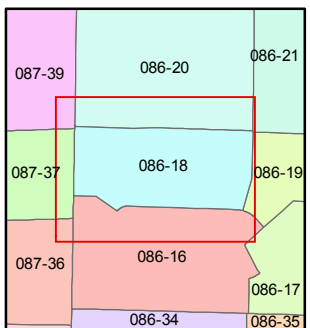
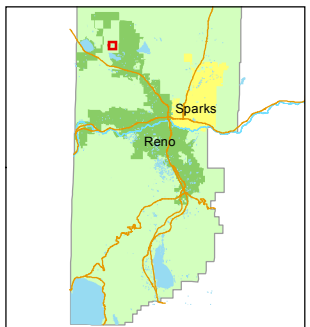
Assessor's Map Number
086-18

STATE OF NEVADA
WASHOE COUNTY
 ASSESSOR'S OFFICE
 Michael E. Clark, Assessor

1001 East Ninth Street
 Building D
 Reno, Nevada 89512
 (775) 328-2231



1 inch = 200 feet



created by: EMG 3/06/2015

last updated: _____

area previously shown on map(s)

080-23, 086-19

NOTE: This map was prepared for the use of the Washoe County Assessor for assessment and illustrative purposes only. It does not represent a survey of the premises. No liability is assumed as to the sufficiency or accuracy of the data delineated hereon.

(#894)
SILVER KNOLLS ESTATES UNIT NO. 2

