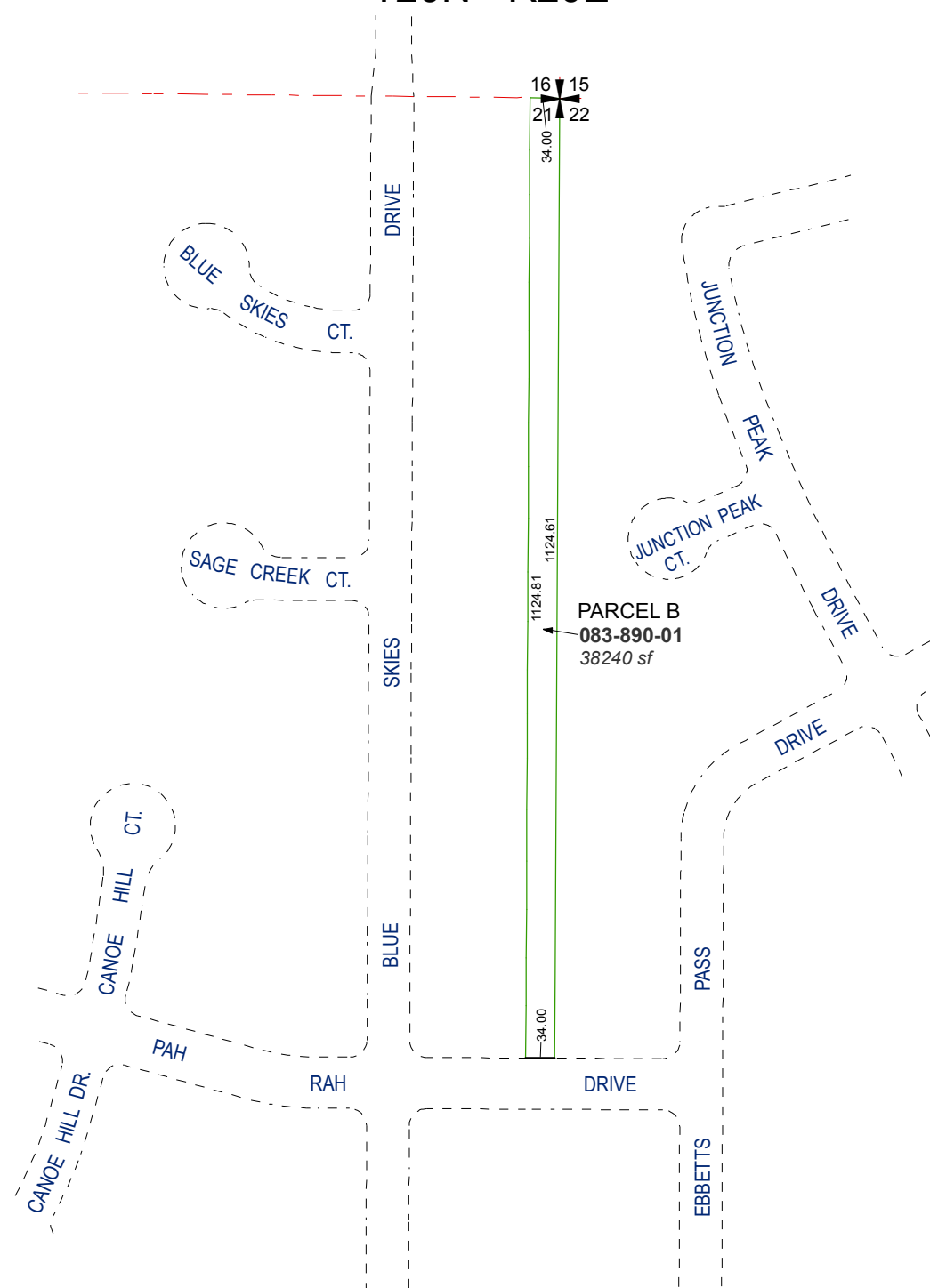


(#3087)
SPRING CREEK SUBDIVISION
UNIT 2H

PORTION OF E 1/2 OF NE 1/4 OF NE 1/4
 OF SECTION 21
 T20N - R20E

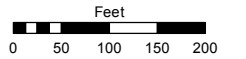


Assessor's Map Number

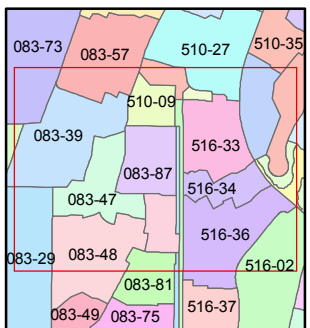
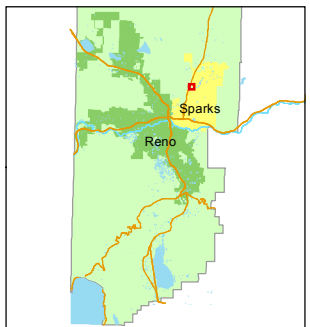
083-89

STATE OF NEVADA
WASHOE COUNTY
ASSESSOR'S OFFICE
 Joshua G. Wilson, Assessor

1001 East Ninth Street
 Building D
 Reno, Nevada 89512
 (775) 328-2231



1 inch = 200 feet



created by: TWT 11/17/2011

last updated: _____

area previously shown on map(s)

NOTE: This map was prepared for the use of the Washoe County Assessor for assessment and illustrative purposes only. It does not represent a survey of the premises. No liability is assumed as to the sufficiency or accuracy of the data delineated hereon.