

(#2534)
JUNIPER HEIGHTS UNIT TWO A

(#2674)
JUNIPER HEIGHTS UNIT TWO B

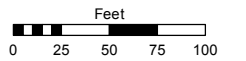
NOTE: THE REST OF JUNIPER HEIGHTS UNIT TWO B APPEARS ON PG. 083-59

Assessor's Map Number

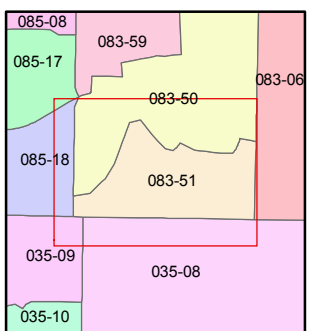
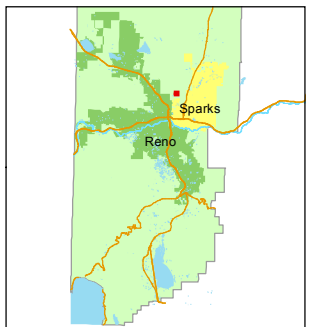
083-51

STATE OF NEVADA
WASHOE COUNTY
ASSESSOR'S OFFICE
 Joshua G. Wilson, Assessor

1001 East Ninth Street
 Building D
 Reno, Nevada 89512
 (775) 328-2231



1 inch = 100 feet

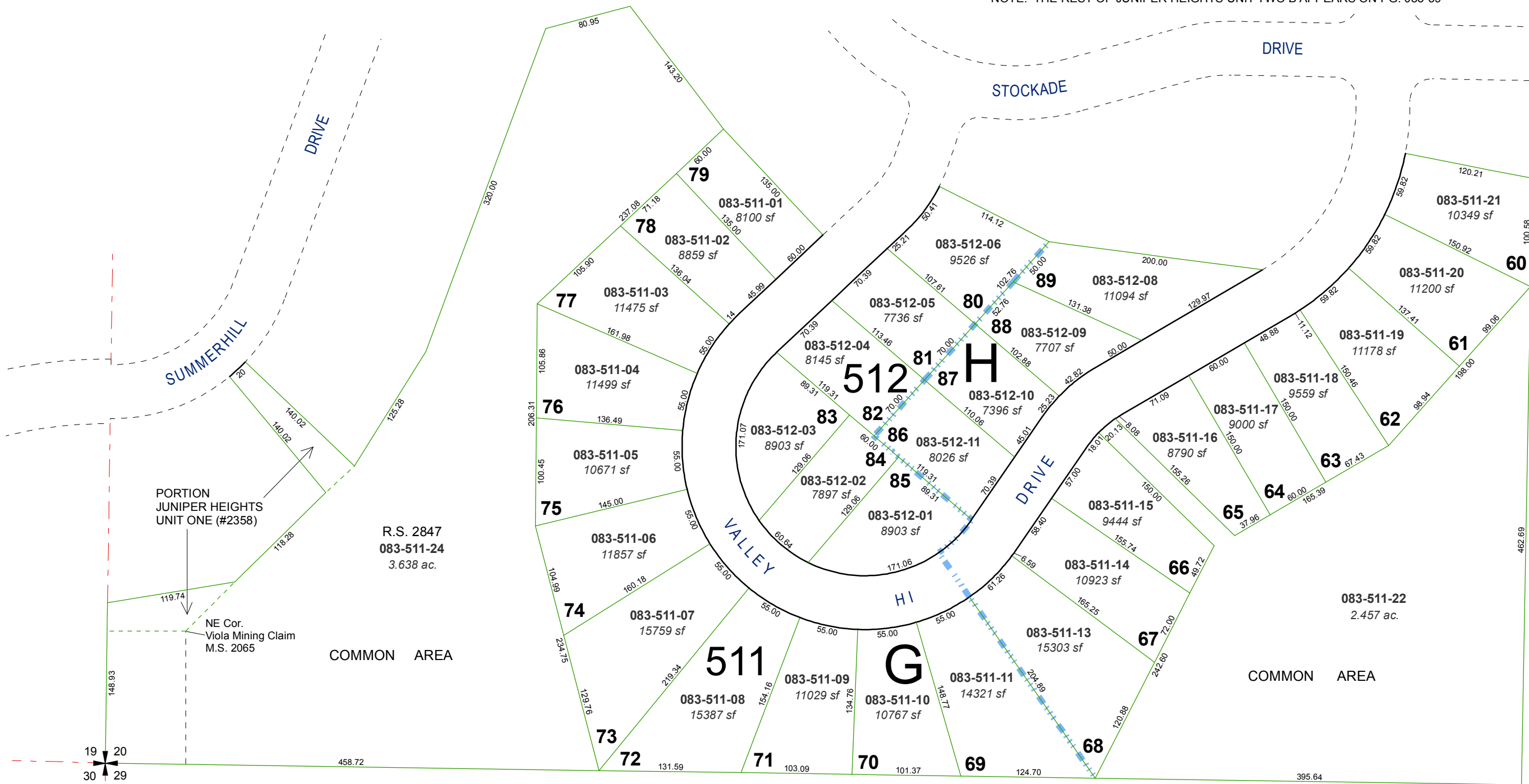


created by: TWT 11/21/2011

last updated: _____

area previously shown on map(s)

NOTE: This map was prepared for the use of the Washoe County Assessor for assessment and illustrative purposes only. It does not represent a survey of the premises. No liability is assumed as to the sufficiency or accuracy of the data delineated hereon.



PORTION OF THE SW 1/4 SECTION 20
T20N - R20E

