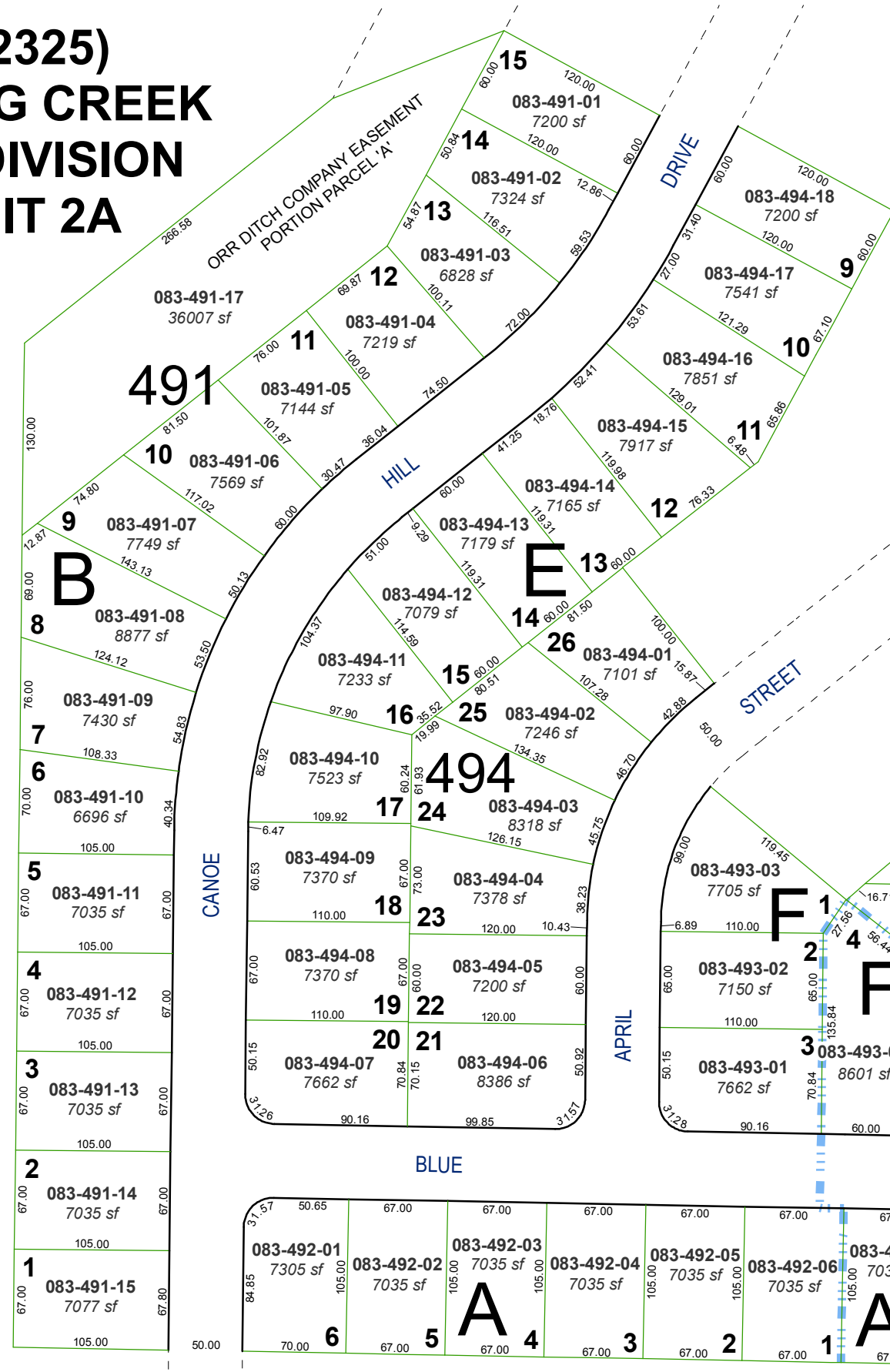
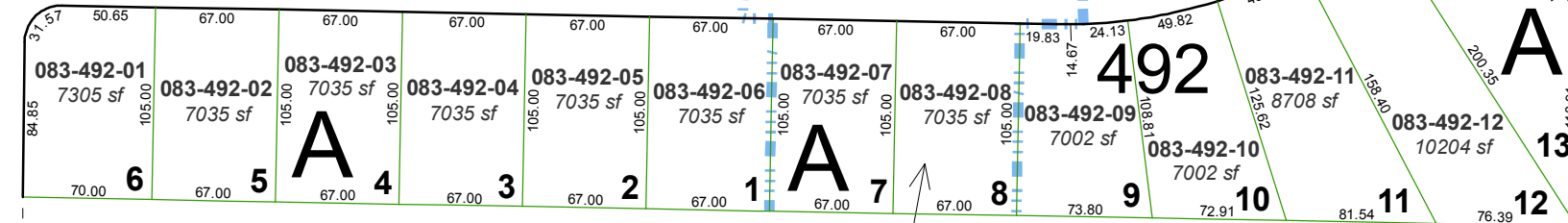
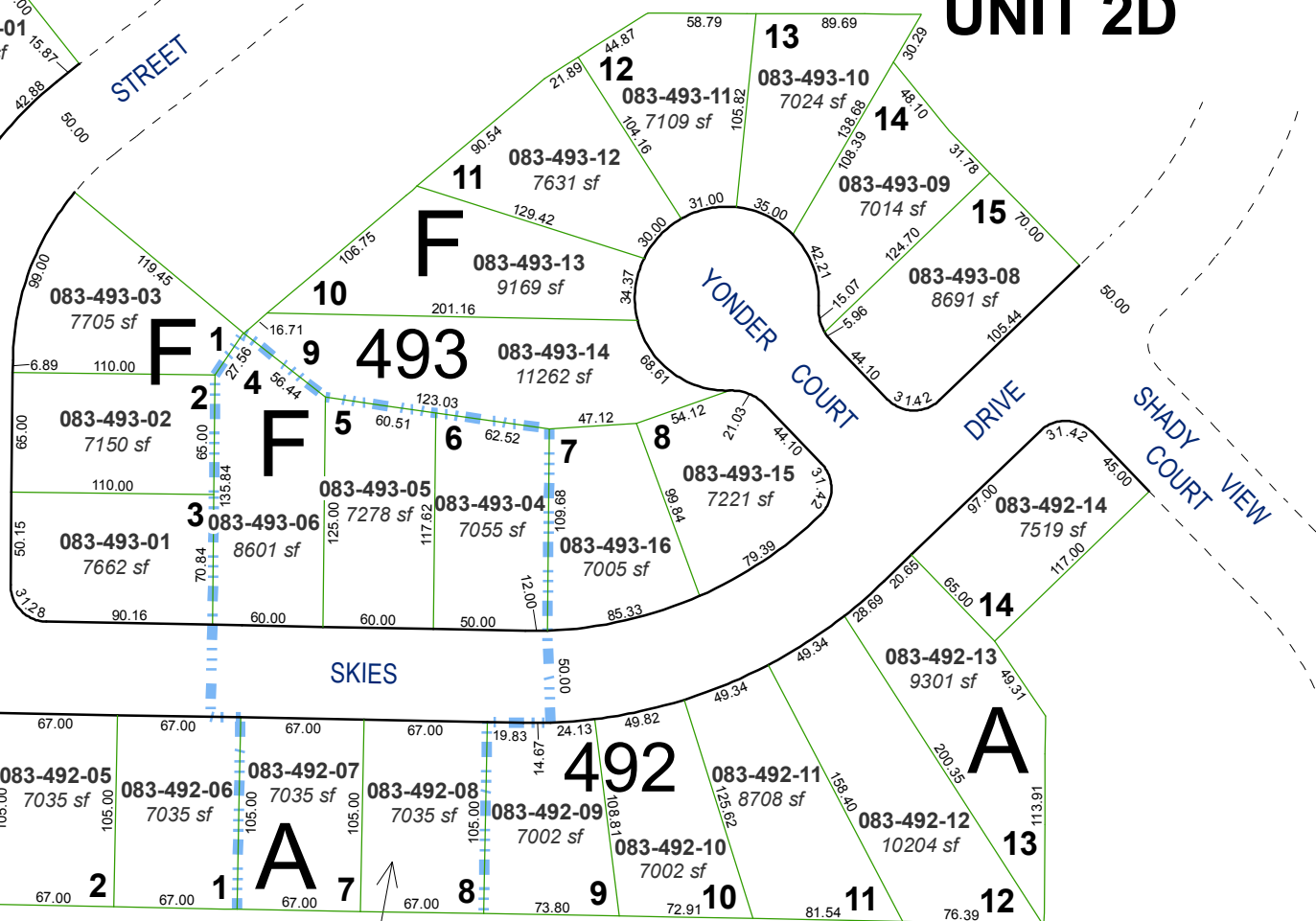


# (#2325) SPRING CREEK SUBDIVISION UNIT 2A



POR. OF NE 1/4 OF SEC. 21  
T20N - R20E

# (#2824) SPRING CREEK SUBDIVISION UNIT 2D

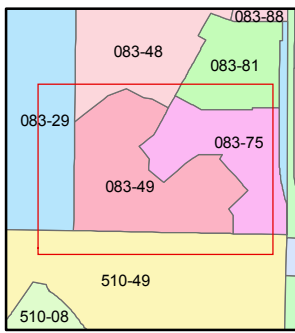
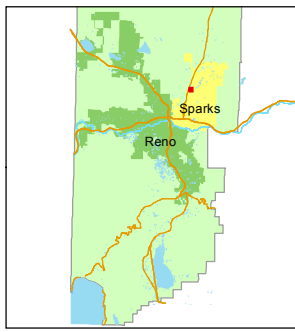
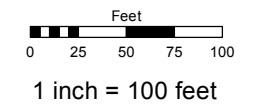


# SPRING CREEK SUB. UNIT 2C (#2766)

Assessor's Map Number  
**083-49**

STATE OF NEVADA  
**WASHOE COUNTY**  
ASSESSOR'S OFFICE  
Joshua G. Wilson, Assessor

1001 East Ninth Street  
Building D  
Reno, Nevada 89512  
(775) 328-2231



created by: TWT 11/15/2011

last updated:

area previously shown on map(s)  
083-29

NOTE: This map was prepared for the use of the Washoe County Assessor for assessment and illustrative purposes only. It does not represent a survey of the premises. No liability is assumed as to the sufficiency or accuracy of the data delineated hereon.