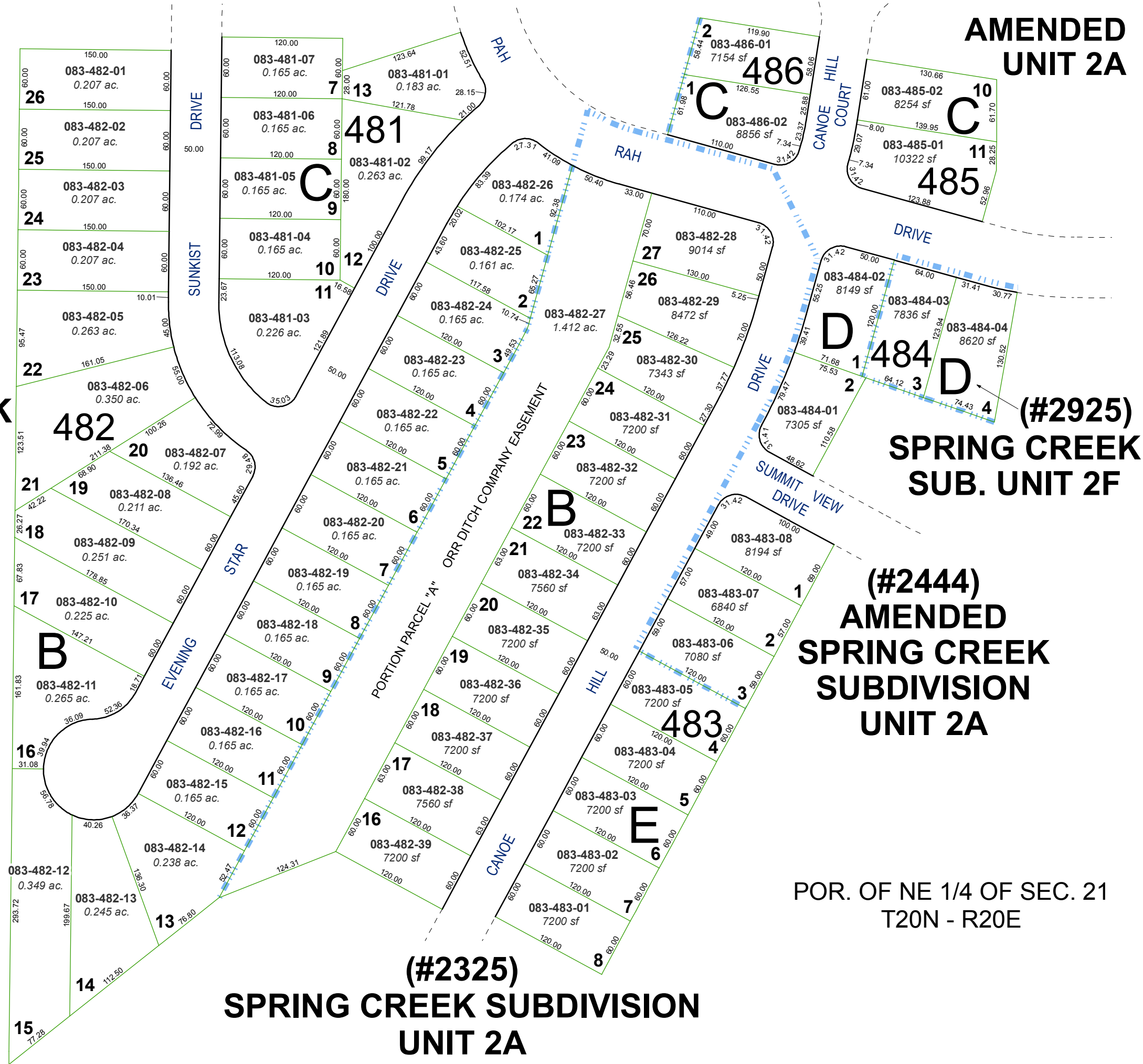


**(#2207)
SPRING CREEK
SUBDIVISION
UNIT 1B**



**(#2325)
SPRING CREEK SUBDIVISION
UNIT 2A**

**AMENDED
UNIT 2A**

**(#2444)
AMENDED
SPRING CREEK
SUBDIVISION
UNIT 2A**

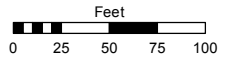
**(#2925)
SPRING CREEK
SUB. UNIT 2F**

POR. OF NE 1/4 OF SEC. 21
T20N - R20E

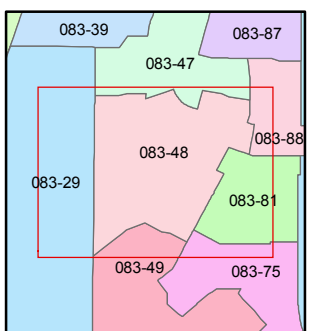
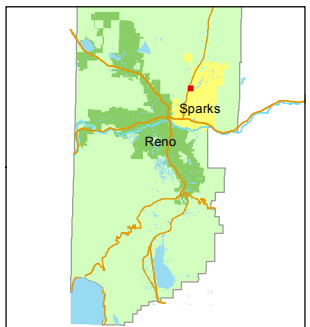
Assessor's Map Number
083-48

STATE OF NEVADA
**WASHOE COUNTY
ASSESSOR'S OFFICE**
Joshua G. Wilson, Assessor

1001 East Ninth Street
Building D
Reno, Nevada 89512
(775) 328-2231



1 inch = 100 feet



created by: TWT 11/14/2011

last updated:

area previously shown on map(s)

NOTE: This map was prepared for the use of the Washoe County Assessor for assessment and illustrative purposes only. It does not represent a survey of the premises. No liability is assumed as to the sufficiency or accuracy of the data delineated hereon.