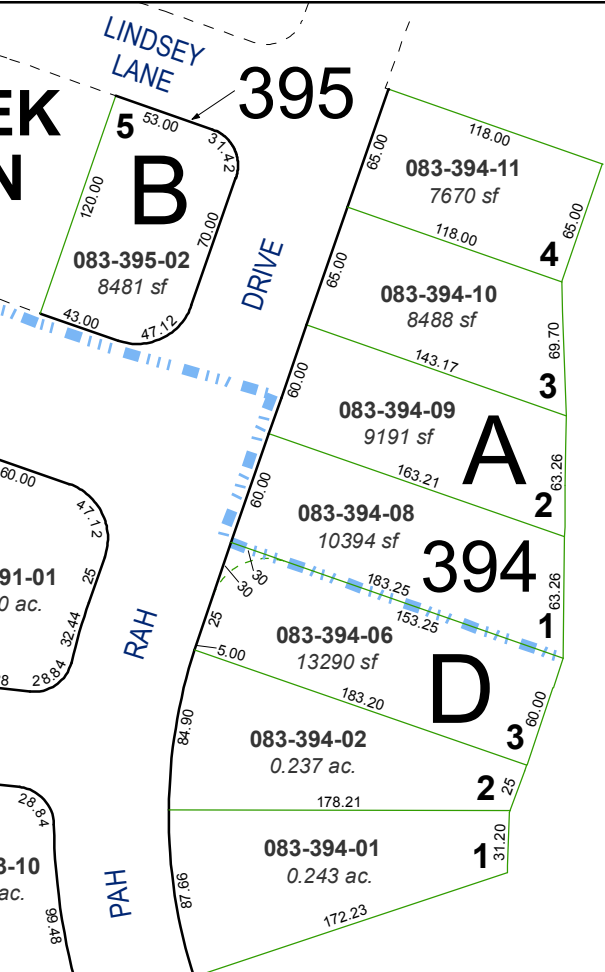
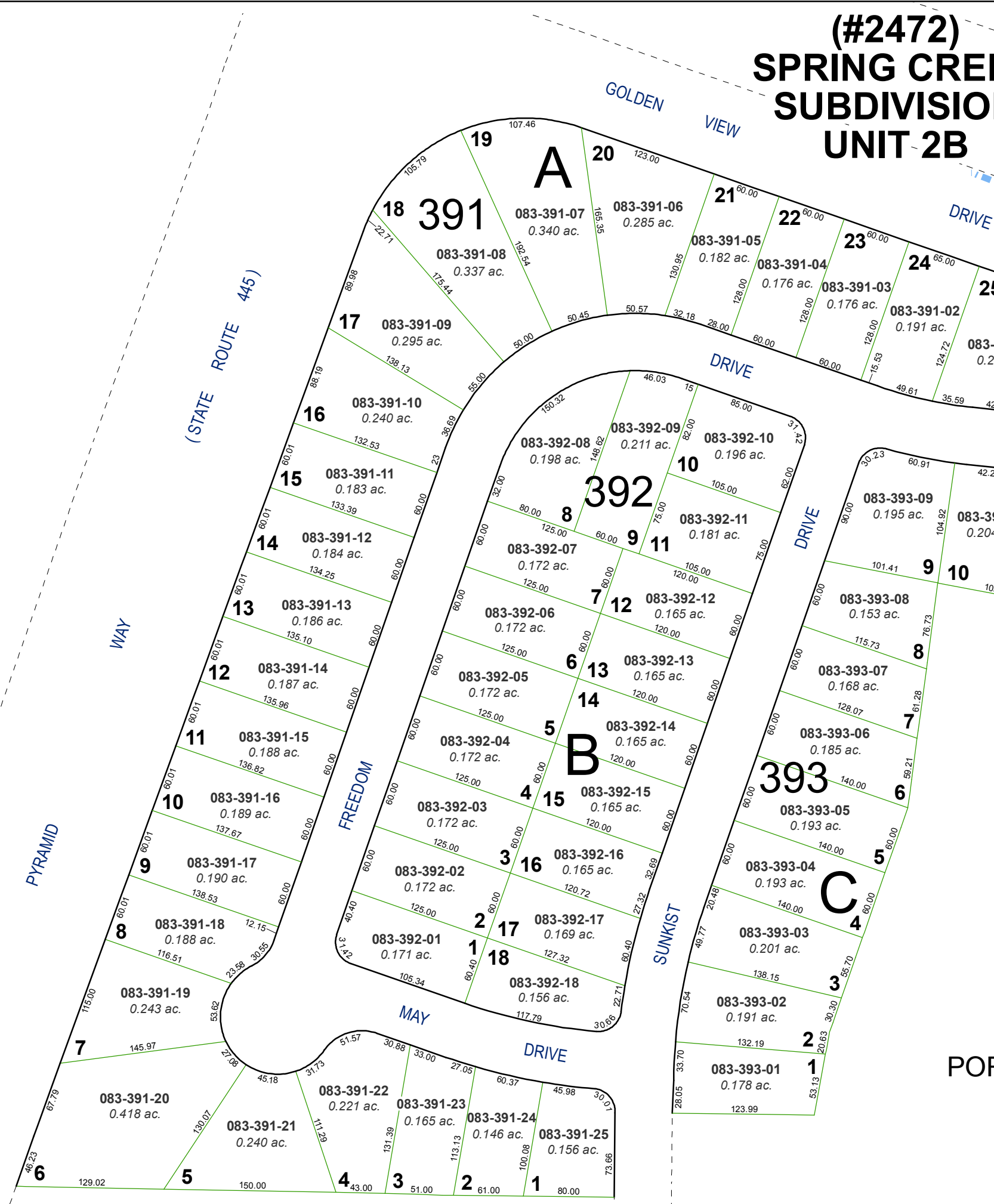


(#2472) SPRING CREEK SUBDIVISION UNIT 2B



(#2145) SPRING CREEK SUBDIVISION UNIT 1A

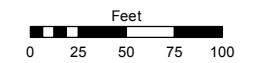
POR. OF THE SE 1/4 OF SEC. 16
& THE NE 1/4 OF SEC. 21
T20N - R20E



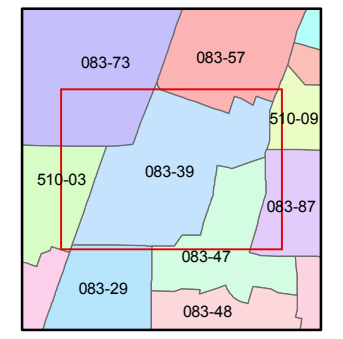
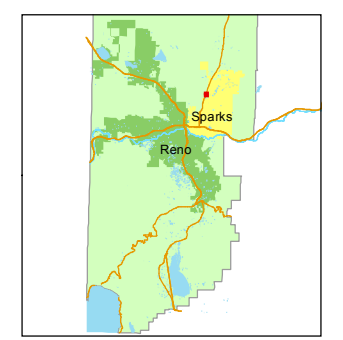
Assessor's Map Number
083-39

STATE OF NEVADA
WASHOE COUNTY
ASSESSOR'S OFFICE
Joshua G. Wilson, Assessor

1001 East Ninth Street
Building D
Reno, Nevada 89512
(775) 328-2231



1 inch = 100 feet



created by: KSB 1/25/12
last updated: _____
area previously shown on map(s) _____

NOTE: This map was prepared for the use of the Washoe County Assessor for assessment and illustrative purposes only. It does not represent a survey of the premises. No liability is assumed as to the sufficiency or accuracy of the data delineated hereon.