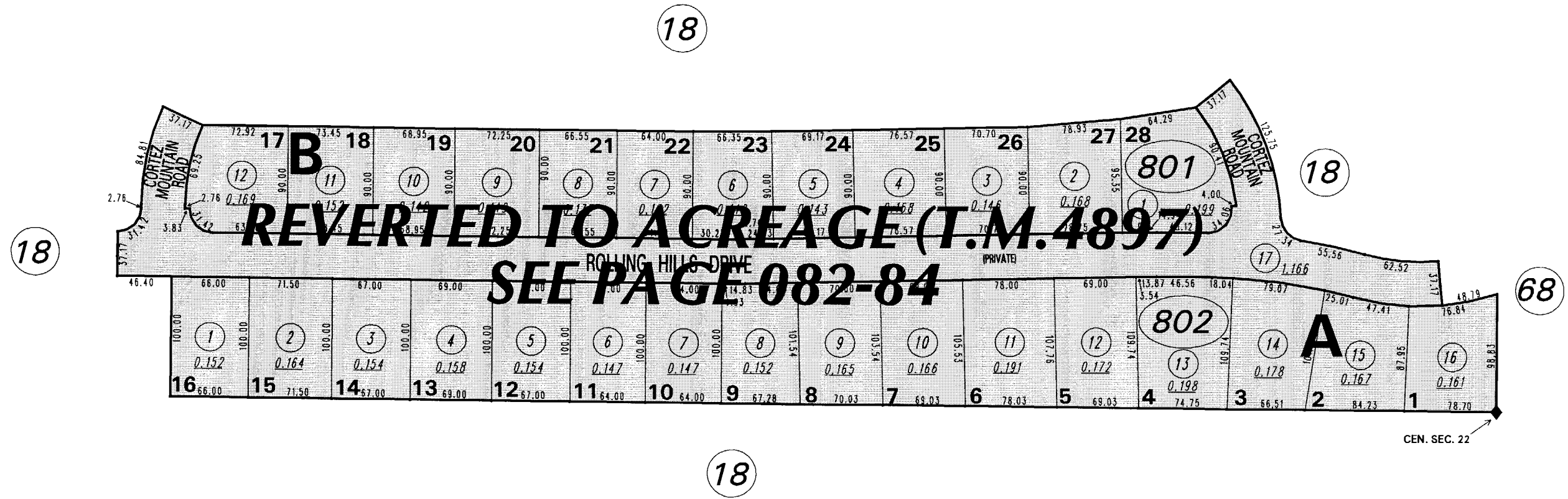


ROLLING HILLS HIGHLANDS - UNIT #7 (#3315) POR. NW¼ SEC. 22, T20N - R19E



NOTE: This map is prepared for the use of the Washoe County Assessor for assessment and illustrative purposes only. It does not represent a survey of the premises. No liability is assumed as to the sufficiency or the accuracy of the data delineated hereon.

Office of Washoe County Assessor, Nevada - Joshua G. Wilson

This area previously shown on _____ Page 18

NOTE: Areas of parcels which are less than 2 acres are shown in square feet.

Drawn by	GZ 11/6/96
Revised	NLH 1/05/09