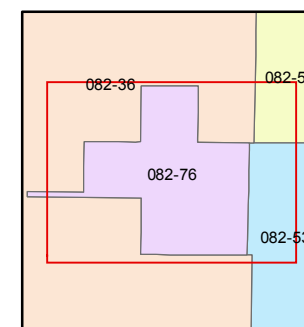
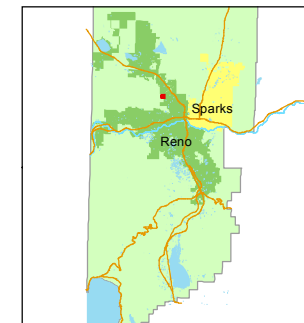


1 inch = 100 feet



created by: CFB 10/26/2010

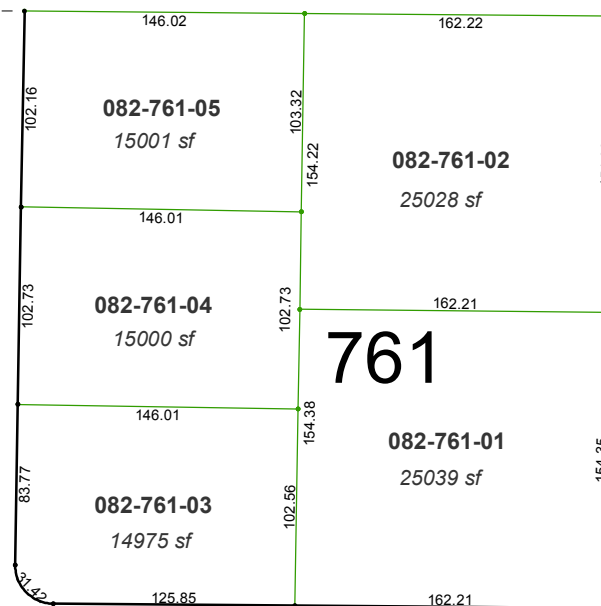
last updated: EMG 8/22/2014

area previously shown on map(s)

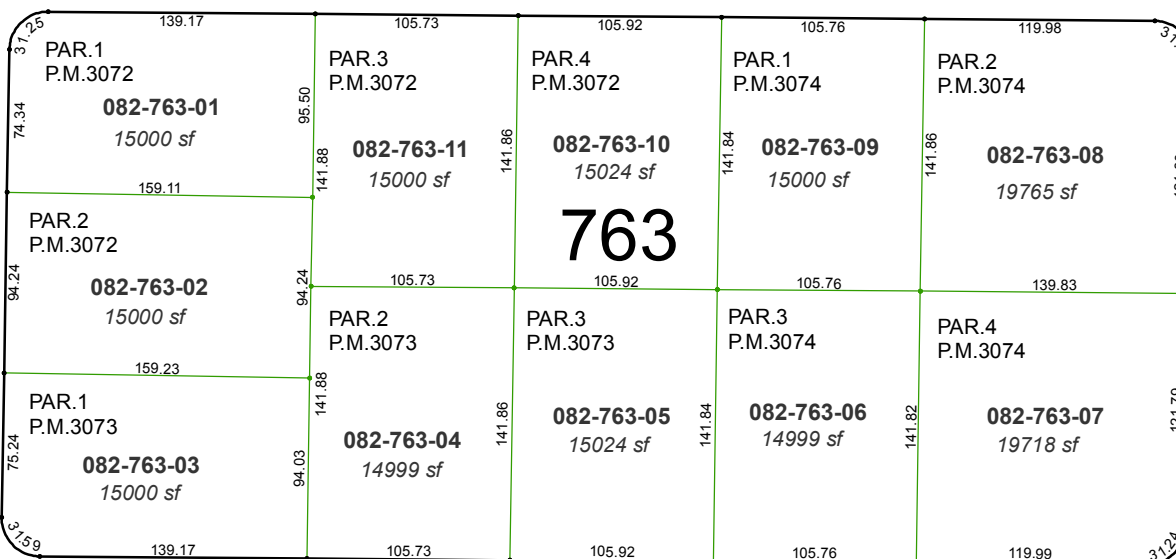
082-36

NOTE: This map was prepared for the use of the Washoe County Assessor for assessment and illustrative purposes only. It does not represent a survey of the premises. No liability is assumed as to the sufficiency or accuracy of the data delineated hereon.

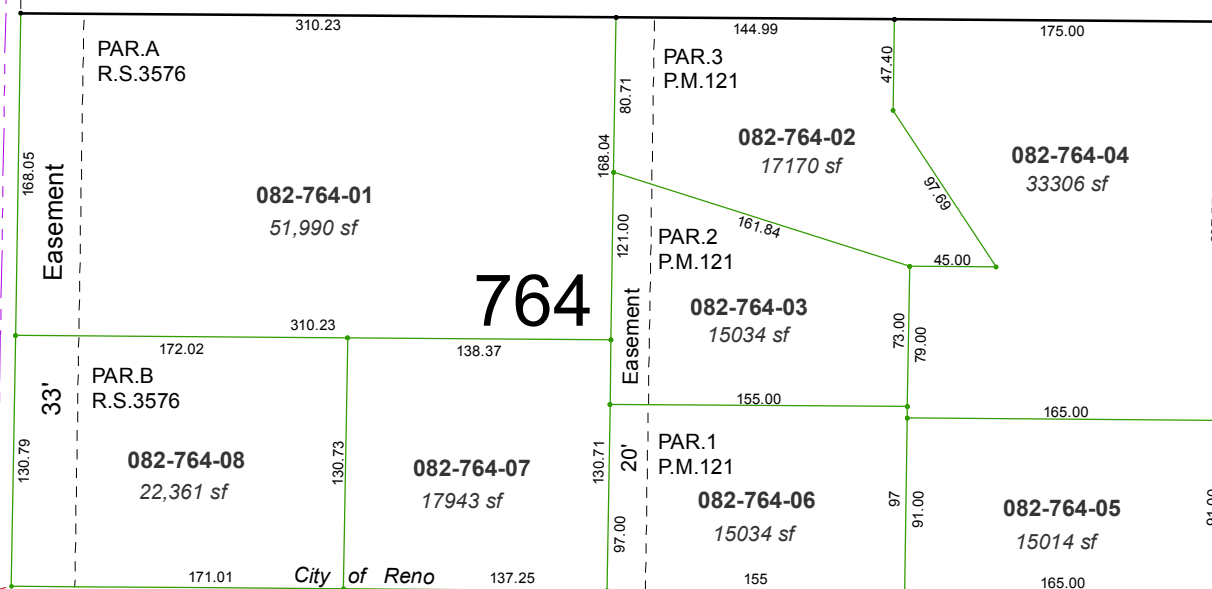
PORTION OF THE E 1/2 OF THE NW 1/4  
OF SECTION 27, T20N - R19E



HARRIS ROAD



HOGUE ROAD



City of Reno  
Washoe County

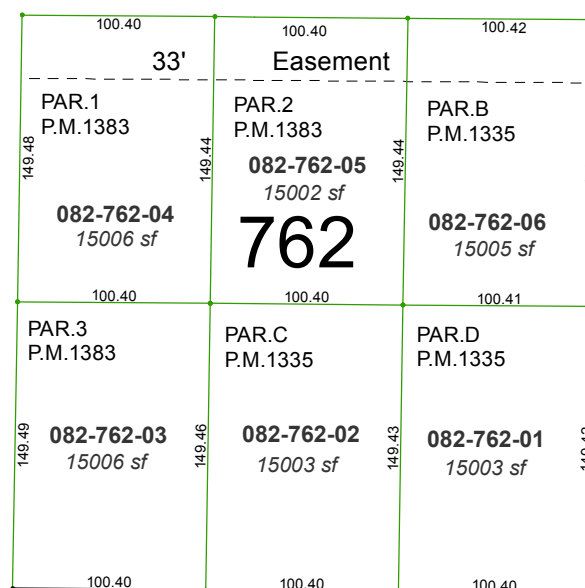
36

36

54

36

53



MASON ROAD

EISAN AVENUE

S71 51' 19"W, 2101.12

28 27