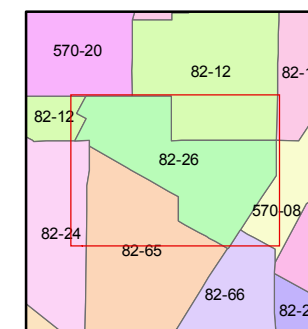
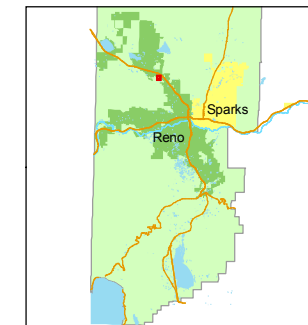


1 inch = 100 feet



created by: CFB 09/15/2009

last updated:

area previously shown on map(s)

NOTE: This map was prepared for the use of the Washoe County Assessor for assessment and illustrative purposes only. It does not represent a survey of the premises. No liability is assumed as to the sufficiency or accuracy of the data delineated hereon.

**PORTION S1/2 SECTION 9 &
N1/2 NW 1/4 SEC. 16, T20N-R19E**

DRIVE

MALCOLM

AVENUE

N 1/4 COR.
SEC. 16

KENNEDY

Washoe County

Reno

262

082-263-26
1.786

082-263-51
32,617 sq.ft.

PAR.1
P.M. 4207

082-263-54
13,535 sf

PAR.2
P.M. 4207

082-263-55
14,536sf

PAR.3
P.M. 4207

082-263-56
15,490sf

082-263-42
14,400 sq.ft.

082-263-02
.287

082-263-52
17,499 sq.ft.

082-263-50
.208

263

082-263-17
.20

082-263-22
.156

082-263-45
.342

082-263-08
.174

082-263-46
.600

082-263-09
.240

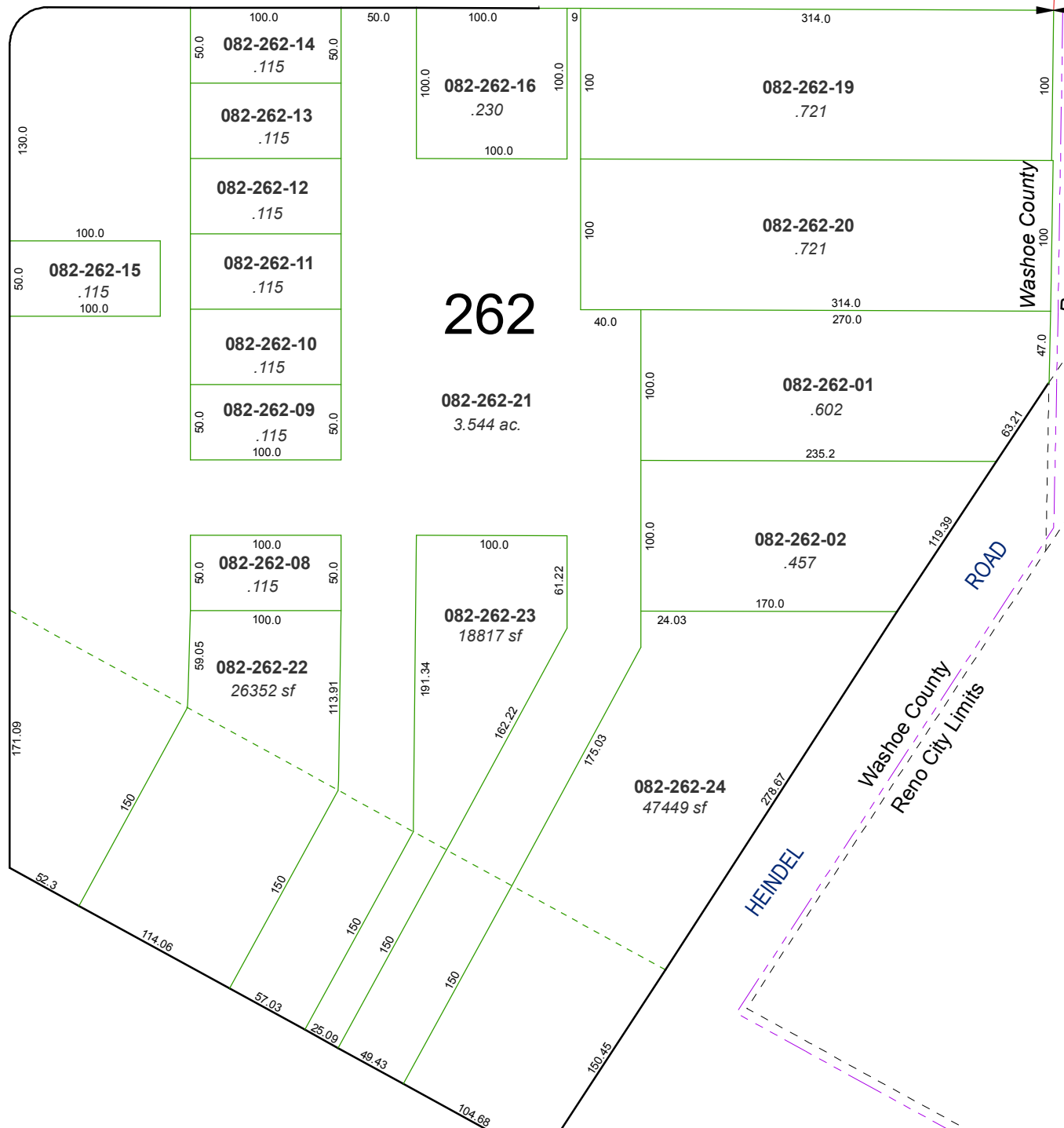
082-263-15
2144 sf

082-263-43
.252

082-263-10
.222

082-263-39
.427

U.S. HIGHWAY
395 (OLD)



082-262-14
.115

082-262-13
.115

082-262-12
.115

082-262-11
.115

082-262-10
.115

082-262-09
.115

082-262-15
.115

082-262-21
3.544 ac.

082-262-01
.602

082-262-02
.457

082-262-08
.115

082-262-22
26352 sf

082-262-23
18817 sf

082-262-24
47449 sf