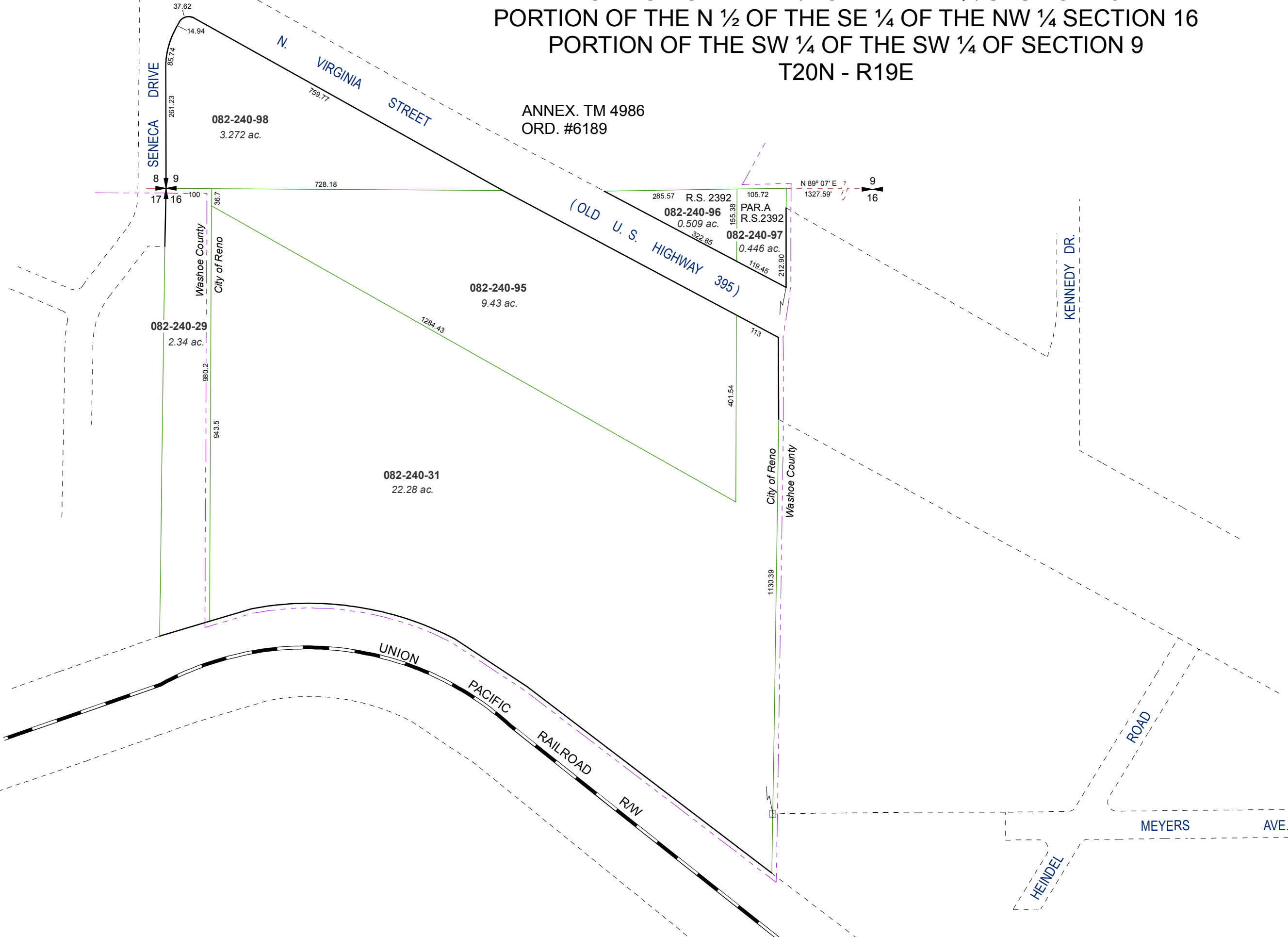


PORTION OF THE N 1/2 OF THE NW 1/4 SECTION 16
 PORTION OF THE N 1/2 OF THE SE 1/4 OF THE NW 1/4 SECTION 16
 PORTION OF THE SW 1/4 OF THE SW 1/4 OF SECTION 9
 T20N - R19E

ANNEX. TM 4986
 ORD. #6189

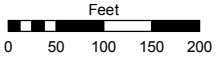


Assessor's Map Number

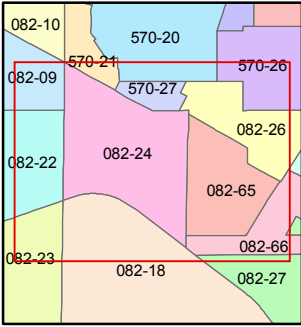
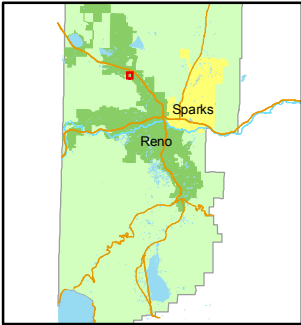
082-24

STATE OF NEVADA
WASHOE COUNTY
ASSESSOR'S OFFICE
 Joshua G. Wilson, Assessor

1001 East Ninth Street
 Building D
 Reno, Nevada 89512
 (775) 328-2231



1 inch = 200 feet



created by: CFB 03/25/2010

last updated: KSB 7/20/11

area previously shown on map(s)

NOTE: This map was prepared for the use of the Washoe County Assessor for assessment and illustrative purposes only. It does not represent a survey of the premises. No liability is assumed as to the sufficiency or accuracy of the data delineated hereon.