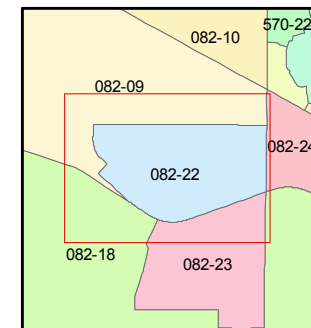
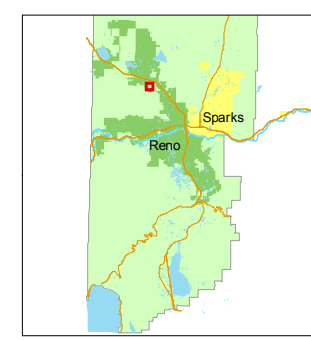
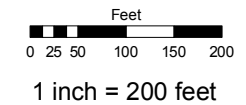


# (#910) HORIZON HILLS UNIT NO.2

PORTION OF N 1/2 SEC.17  
T.20N.-R.19E.

STATE OF NEVADA  
**WASHOE COUNTY**  
ASSESSOR'S OFFICE  
Joshua G. Wilson, Assessor

1001 East Ninth Street  
Building D  
Reno, Nevada 89512  
(775) 328-2231

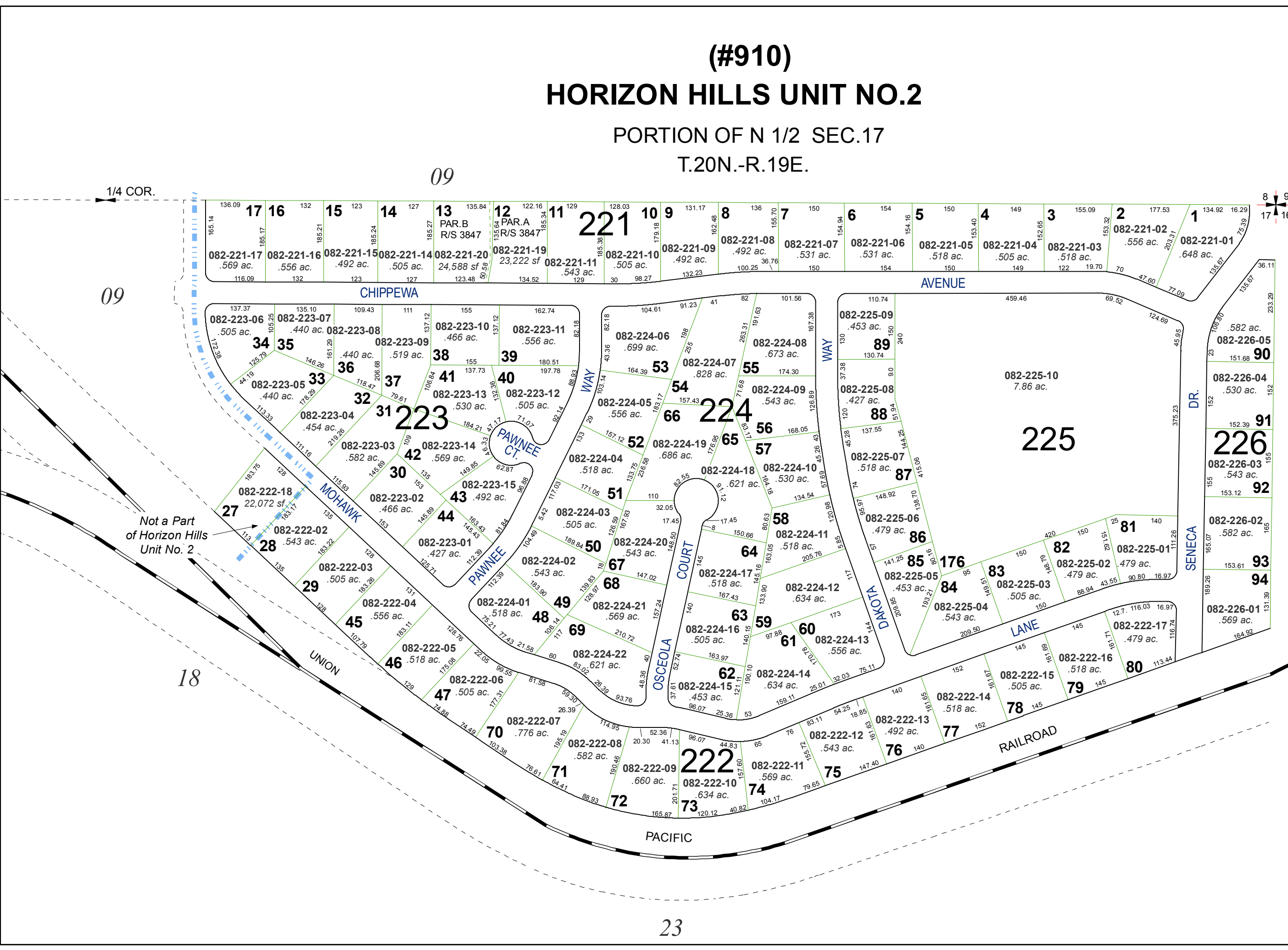


created by: CFB 03/15/2011

last updated: \_\_\_\_\_

area previously shown on map(s) \_\_\_\_\_

NOTE: This map was prepared for the use of the Washoe County Assessor for assessment and illustrative purposes only. It does not represent a survey of the premises. No liability is assumed as to the sufficiency or accuracy of the data delineated hereon.



1/4 COR.

09

09

18

23

8 9  
17 16

Not a Part  
of Horizon Hills  
Unit No. 2