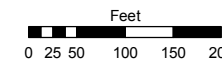
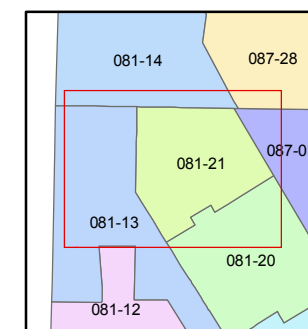
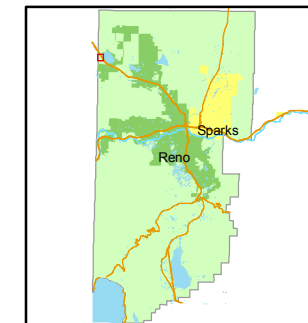


STATE OF NEVADA
WASHOE COUNTY
ASSESSOR'S OFFICE
Joshua G. Wilson, Assessor

1001 East Ninth Street
Building D
Reno, Nevada 89512
(775) 328-2231



1 inch = 200 feet



created by: NLH 9/22/2010

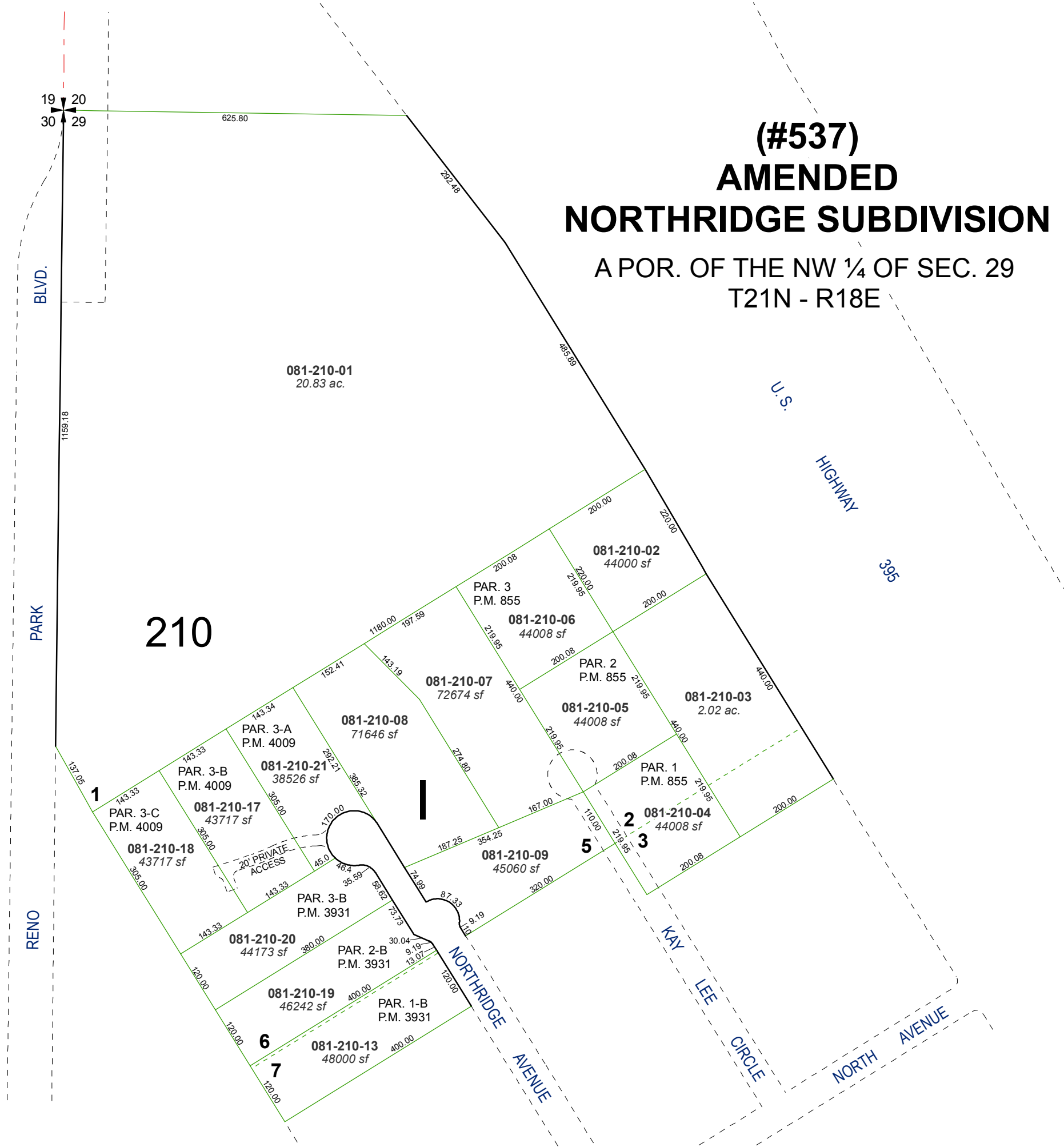
last updated: _____

area previously shown on map(s)

NOTE: This map was prepared for the use of the Washoe County Assessor for assessment and illustrative purposes only. It does not represent a survey of the premises. No liability is assumed as to the sufficiency or accuracy of the data delineated herein.

(#537) AMENDED NORTHRIDGE SUBDIVISION

A POR. OF THE NW ¼ OF SEC. 29
T21N - R18E



210

19 20
30 29

BLVD.

PARK

RENO

U.S.
HIGHWAY
395

NORTHRIDGE
AVENUE

KAY
LEE
CIRCLE

NORTH
AVENUE

081-210-01
20.83 ac.

081-210-02
44000 sf

081-210-06
44008 sf

081-210-07
72674 sf

081-210-05
44008 sf

081-210-03
2.02 ac.

081-210-08
71646 sf

081-210-21
38526 sf

081-210-17
43717 sf

081-210-18
43717 sf

081-210-09
45060 sf

081-210-04
44008 sf

081-210-20
44173 sf

081-210-19
46242 sf

081-210-13
48000 sf

1

5

2

3

6

7

20' PRIVATE
ACCESS

1

110.00

30.04

13.07

13.07

13.07

13.07

13.07

13.07

13.07

13.07

13.07

13.07

13.07

13.07

13.07

13.07

13.07

13.07

13.07

13.07

13.07

13.07

13.07

13.07

13.07

13.07

13.07

13.07

13.07

13.07

13.07

13.07

13.07

13.07

13.07

13.07

13.07

13.07

13.07

13.07

13.07

13.07

13.07

13.07

13.07

13.07

13.07

13.07

13.07

13.07

13.07

13.07

13.07

13.07

13.07

13.07

13.07

13.07

13.07

13.07

13.07

13.07

13.07

13.07

13.07

13.07

13.07

13.07

13.07

13.07

13.07

13.07

13.07

13.07

13.07

13.07

13.07

13.07

13.07

13.07

13.07

13.07

13.07

13.07

13.07

13.07

13.07

13.07

13.07

13.07

13.07

13.07

13.07

13.07

13.07

13.07

13.07

13.07

13.07

13.07

13.07

13.07

13.07

13.07

13.07

13.07

13.07

13.07

13.07

13.07

13.07

13.07

13.07

13.07

13.07

13.07

13.07

13.07

13.07

13.07

13.07

13.07

13.07

13.07

13.07

13.07

13.07

13.07

13.07

13.07

13.07

13.07

13.07

13.07

13.07

13.07

13.07

13.07

13.07

13.07

13.07

13.07

13.07

13.07

13.07

13.07

13.07

13.07

13.07

13.07

13.07

13.07

13.07

13.07

13.07

13.07

13.07

13.07

13.07

13.07

13.07

13.07

13.07

13.07

13.07

13.07

13.07

13.07

13.07

13.07

13.07

13.07

13.07

13.07

13.07

13.07

13.07

13.07

13.07

13.07

13.07

13.07

13.07

13.07

13.07