

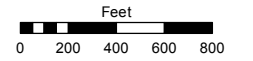
**(R.S. #1062)**  
**SECTIONS 35 & 36**  
**T20N - R18E**

Assessor's Map Number

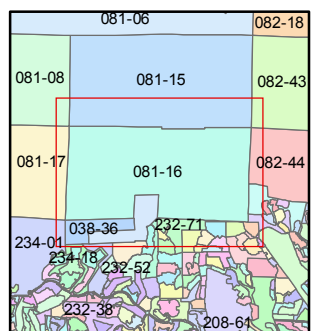
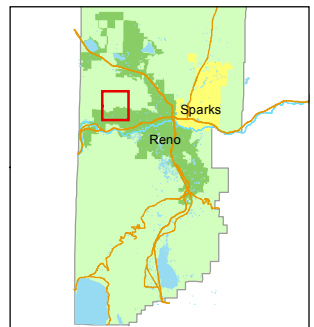
**081-16**

STATE OF NEVADA  
**WASHOE COUNTY**  
**ASSESSOR'S OFFICE**  
 Michael E. Clark, Assessor

1001 East Ninth Street  
 Building D  
 Reno, Nevada 89512  
 (775) 328-2231



1 inch = 800 feet



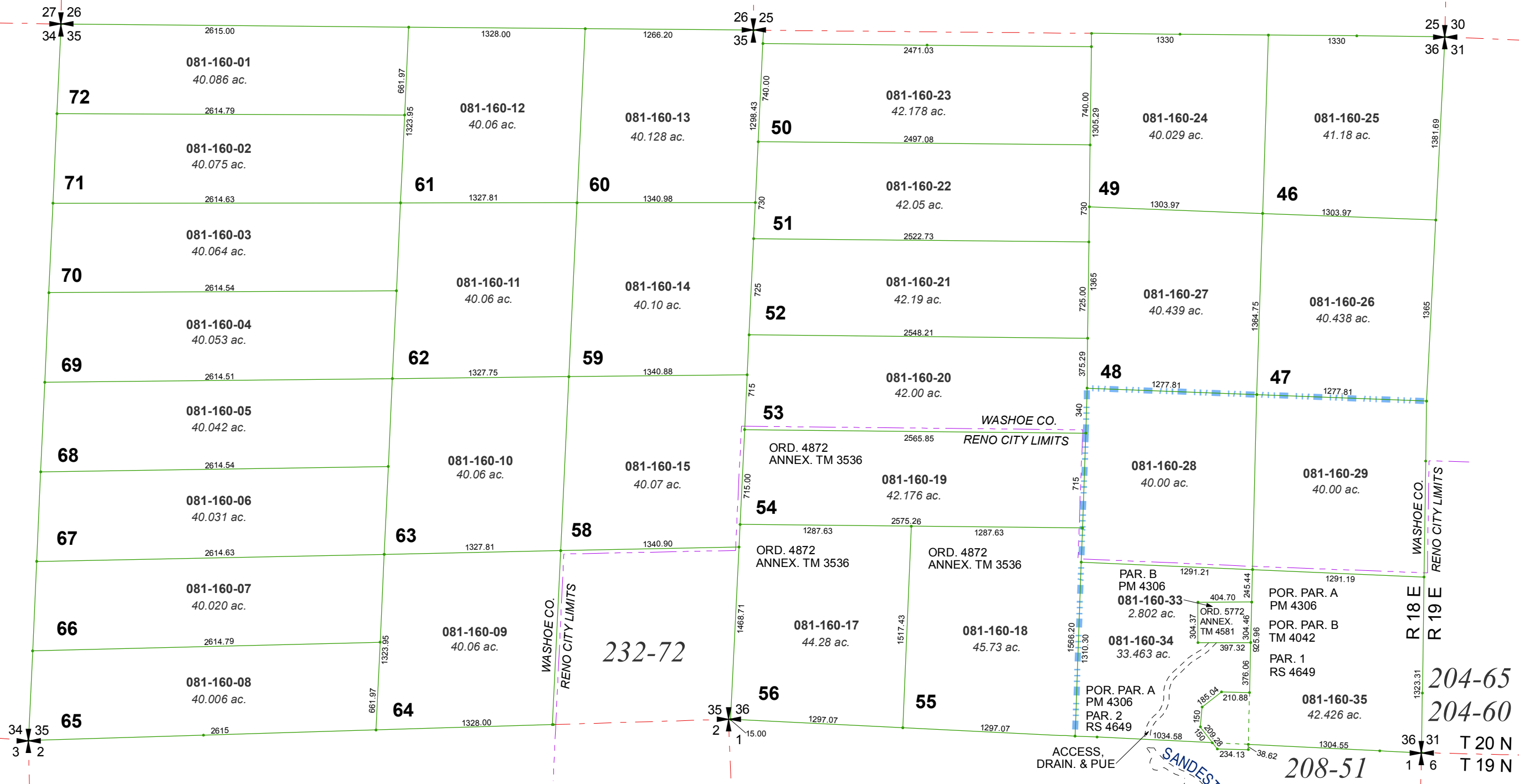
created by: JMO 05/17/2016

last updated: \_\_\_\_\_

area previously shown on map(s)

81-08

NOTE: This map was prepared for the use of the Washoe County Assessor for assessment and illustrative purposes only. It does not represent a survey of the premises. No liability is assumed as to the sufficiency or accuracy of the data delineated hereon.



34 35 3 2  
 27 26 34 35  
 26 25 35 36  
 25 30 36 31  
 35 36 2 1  
 36 31 1 6  
 T 20 N  
 T 19 N